



February 4, 2022

We all know Hallmark created Valentine's Day. Well, actually that's not true. Hallmark invented pink for girls and blue for boys. .... Actually, that's not really true either, but I like to blame Hallmark for both of these traditions. (Secretly, I like the Day, but I dislike the pink/blue tradition.)

The easiest tradition to explain is the pink for girls and blue for boys one. In a nutshell, boys and girls up to the age of six were traditionally clothed in white frilly dresses back in the old days. Like my dad's age. I think the main reasons were – easy to wash and bleach and easy to change diapers.

Sex appropriate colors became more in vogue in the early 20<sup>th</sup> century, think 1920-30. Blue was considered more dainty and was assigned to girls and pink was considered a stronger color and assigned to boys. Even Time Magazine got into the act by noting, in 1927, that large department stores across the nation were showing pink for boys.

And then the 1940s hit and the colors got reversed (let's just leave it at that). And then First Lady Mamie Eisenhower got into the act. She was obsessed with the color pink, even to wearing an entirely strawberry pink gown studded with 2,000 rhinestones to the presidential inaugural ball in 1953. She also decorated the White House in so much pink that it got nicknamed the Pink Palace. And of course American women flocked to the “new” color trend.

But overall, I think marketing is to blame for gender assignments via color. And that's where I blame Hallmark, although it really isn't Hallmark's fault.

Any more than creating a holiday that isn't a holiday but that acts like one (take a breath), isn't Hallmark's fault: Valentine's Day.

Valentine's Day is attributed to Saint Valentine, who is one of possibly three different guys. In one legend he is a priest who defied the orders of Emperor Claudius II (268 A.D.) who declared that because single men make better soldiers, so they could not marry. That St. Valentine married them anyway, in secret, and he was beheaded for his efforts. There is also a Valentine of Terni, who was also beheaded by Claudius II, perhaps for the same reasons as the other St. Valentine. Or maybe the two were the same. See where this is going? No one really knows and the histories are quite mixed up. What

is common among them (and a third St. Valentine) is that they tended to be peaceful, perhaps overly romantic, individuals who encouraged love.

The first “valentine” greeting may have even been sent by this third St. Valentine, who got caught helping Christians escape from Roman prisons. This Valentine, it is said, fell in love with a young girl (perhaps the daughter of his jailer) and before his death he sent her a letter signed, “From Your Valentine.”

Consequently, since the middle ages, Saint Valentine (pick your favorite) has become one of the most popular saints.

Now the date picked for Valentine's Day has religious overtones, as well. The pagan celebration of Lupercalia is celebrated on the ides of February, or February 15. We all know about the ides of March, thanks to Julius Caesar and Shakespeare: “Beware the Ides of March,” a soothsayer warns Caesar. And the soothsayer was right: Caesar was killed on March 15.

The “ides” is means of counting days in Roman times from three fixed dates. The Nones occurred on the 5<sup>th</sup> or 7<sup>th</sup>, depending on the month and was 9 days inclusive before the Ides, which occurred on the 13<sup>th</sup> or 15<sup>th</sup>, and the Kalends, which was always occurred the first of the month. There is a great joke here, I just know it, but I don't even know which day of the month I'm in in the year 2022. I can't imagine what the calendars were like in Caesar's time.

So back to Lupercalia. It was an ancient (A.D. 270) pagan, bloody ritual, involving animal sacrifice and random matchmaking (that's a very cleaned up way of describing it) in order to ward off evil spirits and promote fertility. It gives the phrase “my bloody valentine” a whole new meaning (see the 1981 movie of same name and its remake 2009).

So fast forward to the Middle Ages (about 800 years later, give or take a hundred years), Geoffrey Chaucer wrote a poem with this line: “For this was sent on Seynt Valentyne's day / Whan every foul cometh ther to choose his mate.” And, yes, in case you're wondering, “foul” refers to birds. It's an allegory.

Fast forward to 1415, when Charles, the Duke of Orleans, who was imprisoned in the Tower of London, sent his wife a poem that is considered to be the first Valentine Card. And a couple of years later, King Henry V hired a writer, John Lydgate, to write a valentine poem/note to Catherine of Valois, his soon-to-be wife. Again, reference Shakespeare for more info, or better yet watch the movie, Henry V, starring Kenneth Branagh. Believe me, with Branagh playing Henry, you'll be able to understand every word Shakespeare wrote. Even Katherine understood his love monologue (end of play) and she didn't even speak English. Not even Shakespeare's English.

Fast forward to the 1700s and you'll find evidence of friends and lovers exchanging tokens of affection. In 1900 printed cards started to appear. And today there are more than 145 million cards sent. It is a bigger holiday for cards than Christmas.

So while we may decry Valentine's Day as just another way to market flowers and candy, it has a rich tradition of love and romance attached to it. So why not participate? The flowers smell good and the chocolate is sustaining. And remember:

It was upon a Sommers shynie day,  
When **Titan** faire his beames did display,  
In a fresh fontaine, farre from all mens vew,

She bath'd her brest, the boyling heat t'allay;  
She bath'd with roses red, and violets blew,  
And all the sweetest flowres, that in the forrest grew.  
Edmund Spemcer, The Faerie Queen, 1590.

Translation? Roses are red, violets are blue, sugar is sweet, and so are you. Happy Valentine's Day! (I know it's not the Ides of February yet.... and be sure to check out the Valentine Quilt pattern below. You will have to click on the words Be Mine.)

---



## **Delta Kappa Gamma**

*International Society of Women in Education*

# Used Book Sale

## March 5 & 6

*Saturday 8 a.m. to 6 p.m.*

*Sunday 9 a.m. to 3 p.m.*

**(MASKS WILL BE REQUIRED)**

**In the former Big Lots in Cheyenne Plaza**

**3741 East Lincolnway**

**(Next to Sportsman's Warehouse)**

**Please donate used books:**

***February 1 through 27***

### **Collection locations:**

***Sale site (preferred option) hours are:***

Tuesdays 9am-12pm

Thursdays 1pm to 7pm

Sundays 1pm to 4pm

*Or drop books at*

***Safeway YMCA Both Albertson's  
Natural Grocers Gold's Gym***

If very large donation (within 10-mile radius),  
or unable to get to a box or sale location  
call **369-2940** or **421-1755** for appointment.  
Books must be boxed – on porch or in garage.

(Leave a message)

DKG will collect used books from Feb 1 through February 27. The preferred collection spot is at the sale site in the former Big Lots in Cheyenne Plaza, 3741 Lincolnway (next to Sportsman's Warehouse). The hours for collection at the site are Tues 9-12, Thurs 1-7, and Sun 1-4.

Collection boxes will also be located at Safeway, 700 S. Greeley Hwy; Natural Grocers, 5116

Frontier Mall Dr #400; Albertson's at 5800 Yellowstone Rd and 3355 E. Pershing. You may also drop books at Gold's Gym, 1616 Pershing Blvd. and at the YMCA, 1426 E. Lincolnway.

If you have a large quantity or are not able to deliver books, (within a 10-mile radius) call 421-1755 or 369-2940 to make an appointment. For worker safety, these books must be boxed or bagged and on a porch or in a garage. (Please leave a message.)

Books on CD, DVD's, games, and puzzles are appreciated. Old encyclopedias, Condensed books, and text books do not sell well. Please recycle them elsewhere.

The hours for the sale on Sat, March 5 are 8a.m. to 6p.m. and on Sun, March 6 from 9 a.m. to 3 p.m. For everyone's safety,

**MASKS WILL BE REQUIRED.**

Members of Delta Kappa Gamma, an international society of women in education, will collect books beginning Saturday, Feb 1 for their 38th annual Used Book Sale.

---

## Happy Valentines Day!

Be Mine is a scrap quilt made from my "stash" under the cutting table: All the left over ends of bolts, scraps and otherwise tossed fabric bits. **Be Mine**



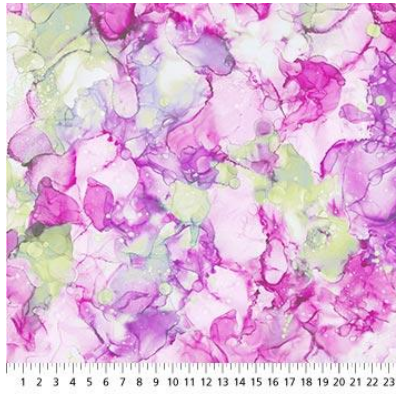
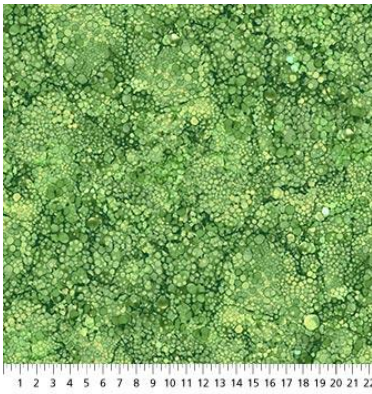
---

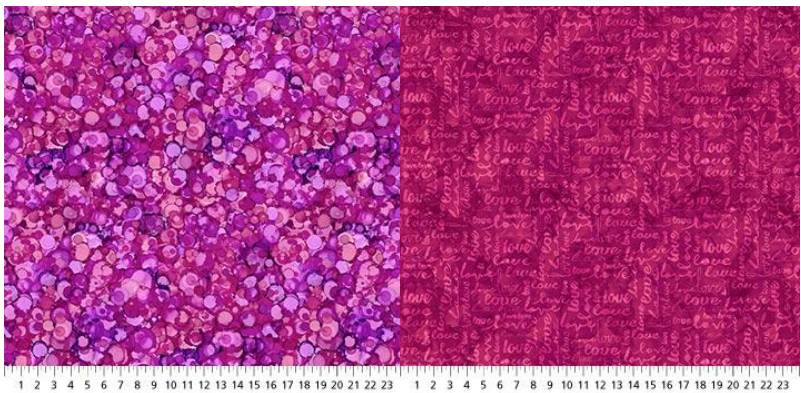
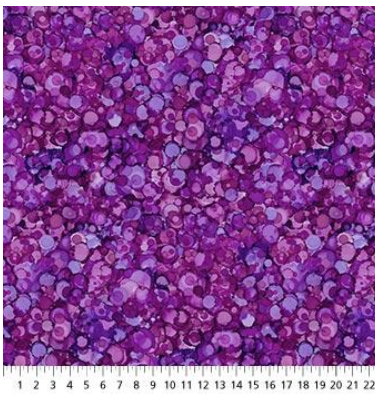
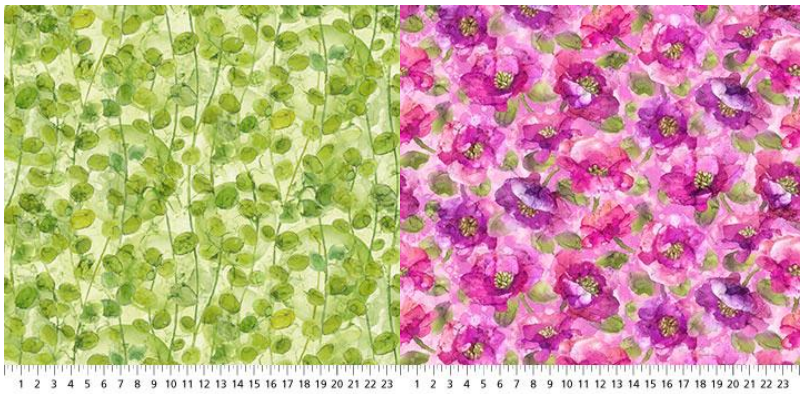
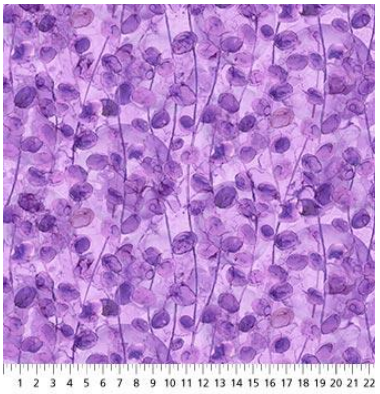
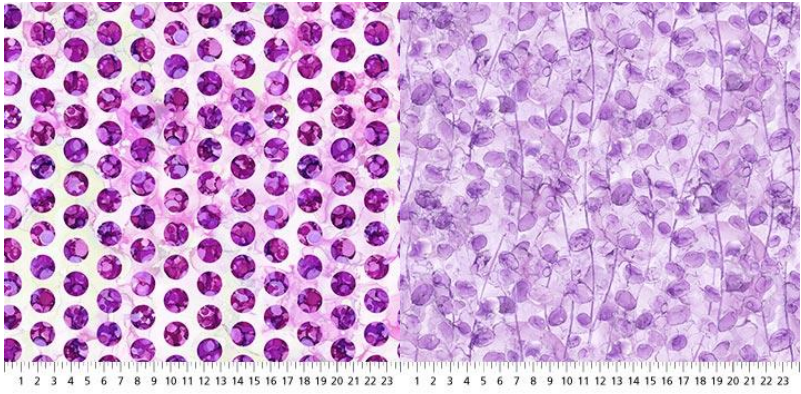
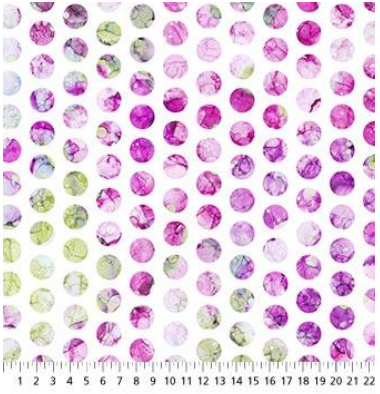
## What's New

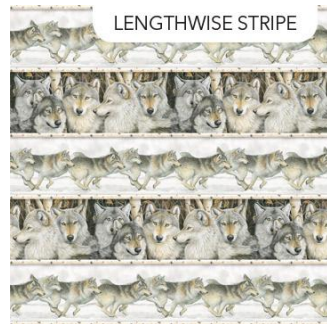
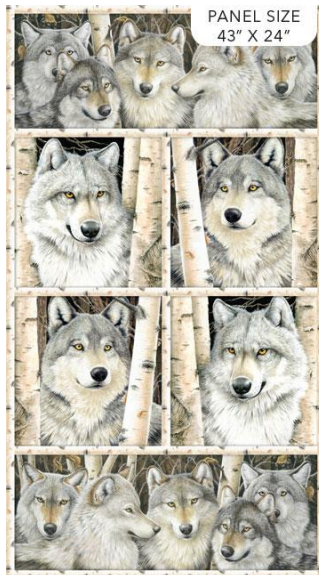
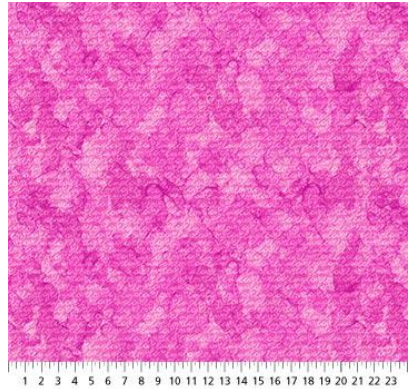


Northcott: Above quilt pattern

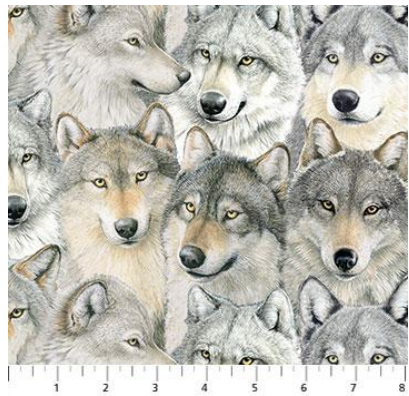
RUNNING YARDAGE







Northcott: We have one kit left







1 2 3 4 5 6 7 8 9 10 11



1 2 3 4 5 6 7 8 9 10 11 12



1 2 3 4 5 6 7 8 9 10 11 12



1 2 3 4 5 6 7 8 9 10 11



1 2 3 4 5 6 7 8 9 10 11 12



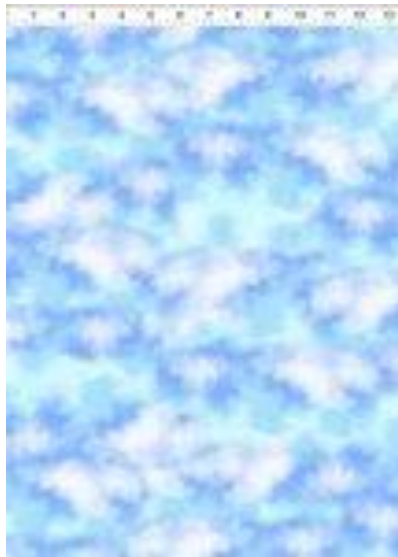
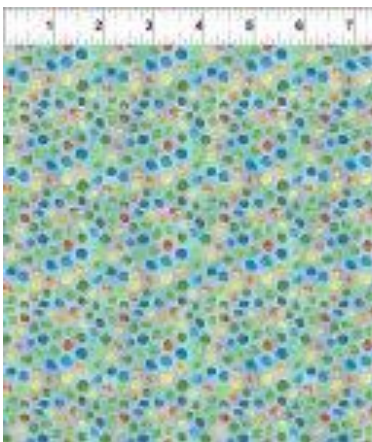
1 2 3 4 5 6 7 8 9 10 11 12

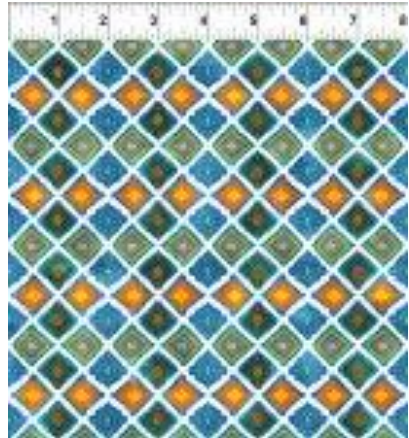


Riley Blake

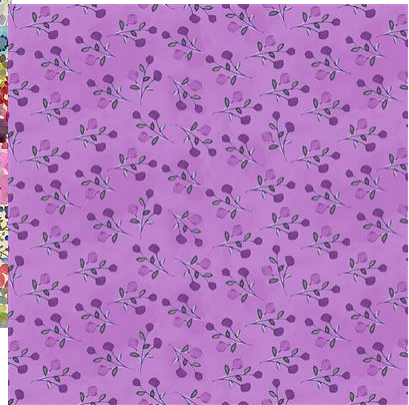
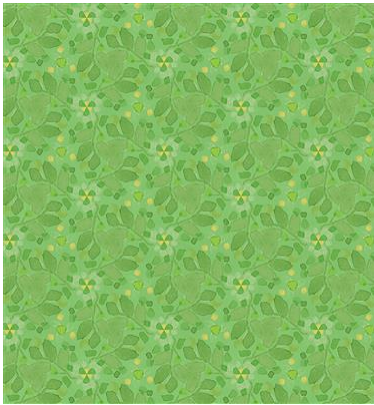


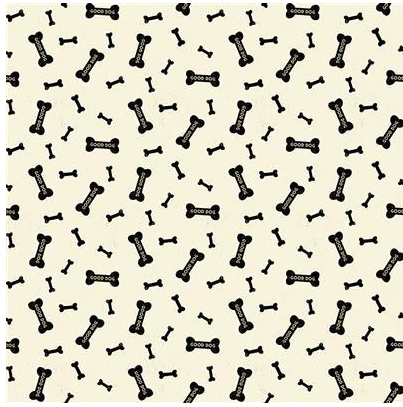
From In the Beginning: We made kits





From Clothworks

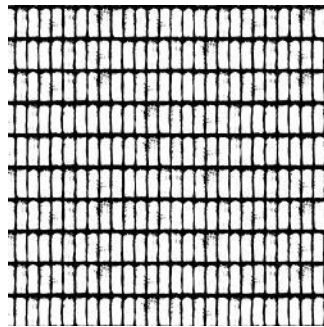
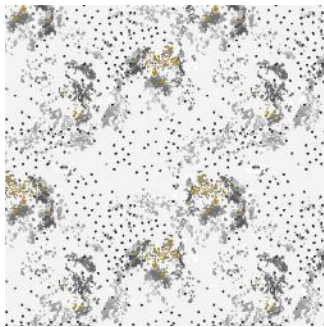






From Clothworks

---



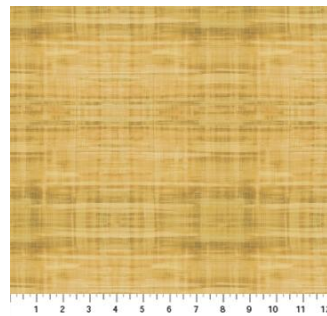
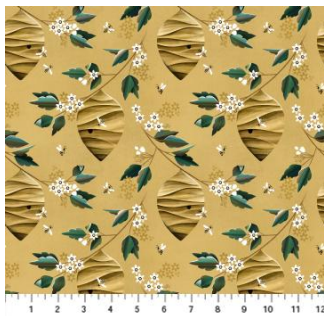
From RJR

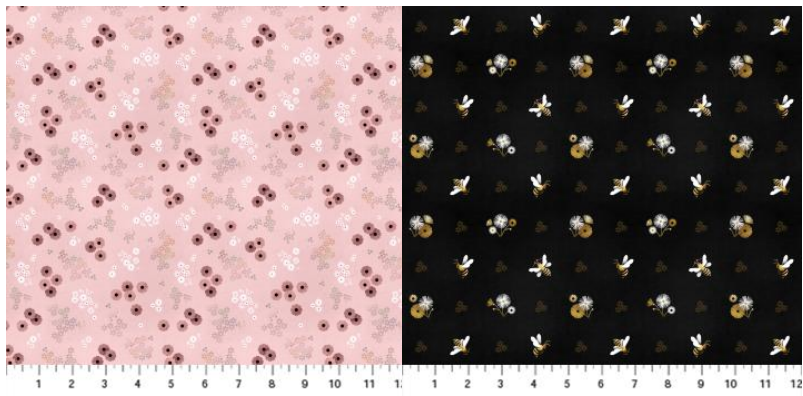
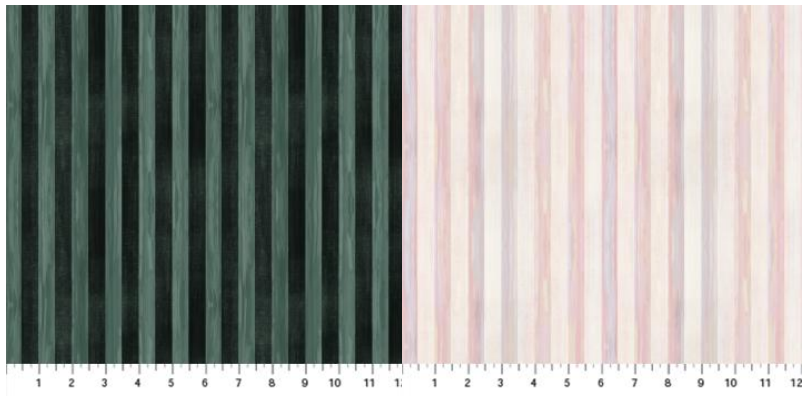
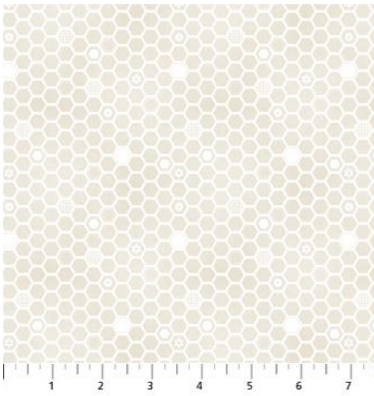
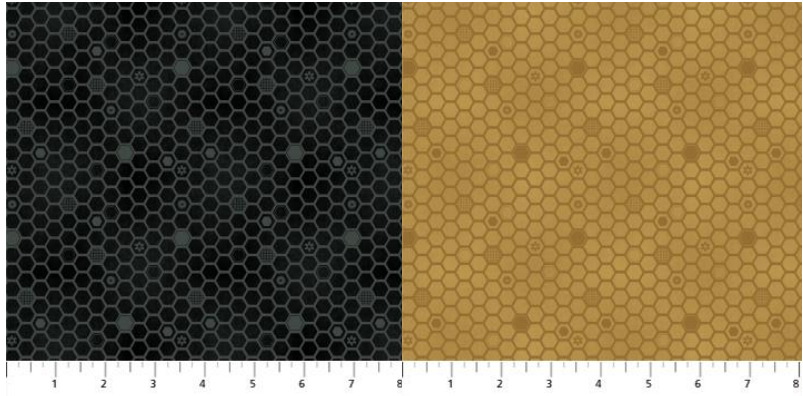


From Riley Blake



Northcott



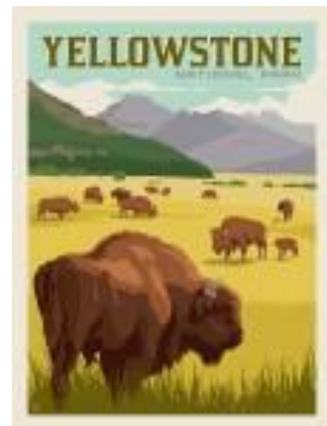
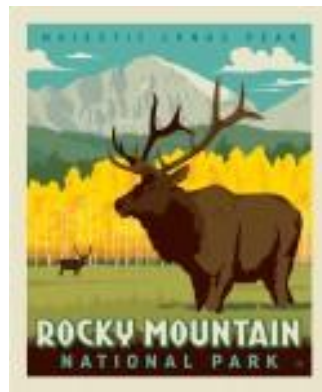


Northcott/Figo





Riley Blake (the 3 juvenile prints are flannel)



February 2022

Sunday	Monday	Tuesday	Wednesday	Thursday	Friday	Saturday
		1 Hand work Club 2-4	2 Long Arm class 10:30	3 Long Arm Rental Day	4	5 BOM 10:30 Wonton/Hex n More ruler quilt
6 Beginning Quilt 1-4	7	8 Hand work Club 2-4	9 Knit Pickers' Club 2-4	10 Long Arm Rental Day	11	12 Embroidery Club 10-noon Crazy Quilt Day 1-4
13 Beginning Quilt 1-4	14	15 Hand work Club 2-4	16 Long Arm class 10:30 Full moon	17 Long Arm Rental Day	18	19 Buggy Barn/One Sister 10:30-4
20 Beginning Quilt 1-4	21 Presidents' Day Elizabeth Hartman <a href="#">choose your</a>   favorite pattern	22 Hand work Club 2-4	23 Knit Pickers' Club 2-4	24 Long Arm Rental Day	25	26 Buggy Barn/One Sister 10:30-4
27 Beginning Quilt 1-4	28	Color of the month: red				

Sunday	Monday	Tuesday	Wednesday	Thursday	Friday	Saturday
		1	2 Long Arm class 10:30	3 Long Arm Rental Day	4	5 BOM 10:30 Northcott BOM tips and tricks 1-3
6 Beginning Quilt 1-4	7	8 Hand work Club 2-4	9 Knit Pickers' Club 2-4	10 Panel Workshop 1-4 Long Arm Rental Day	11	12 Embroidery Club 10-noon Crazy Quilt Day 1-4
13 Beginning Quilt 1-4	14	15 Hand work Club 2-4	16 Long Arm class 10:30	17 Long Arm Rental Day	18 Full moon	19 National Quilt Day Demos TBA Crazy Quilt Day
20 Beginning Quilt 1-4	21	22 Hand work Club 2-4	23 Knit Pickers' Club 2-4	24 Long Arm Rental Day	25	26 Laura Heine collages & working with <u>fusibles</u>
27 Beginning Quilt 1-4	28	29 Hand work Club 2-4	30	31 Long Arm Rental Day	Color of the month: green	

Sunday	Monday	Tuesday	Wednesday	Thursday	Friday	Saturday
Color of the month: yellow					1	2  BOM 10:30 Nova/Sidekick ruler quilt 1-5
CLOSED 3	4	5 Hand work Club 2-4	6 Beginning Machine Quilting 1-4	7 Long Arm Rental Day	8	9 Embroidery Club 10-noon Spider web 1-5
CLOSED 10	11	12 Hand work Club 2-4	13 Knit Pickers' Club 2-4	14 Long Arm Rental Day	15	16 Deb Tucker's Tumbling Triangle w/V Block Ruler
CLOSED Easter 17	18	19 Hand work Club 2-4	20 Beginning Machine Applique 1-4	21 Long Arm Rental Day	22	23 Spider web 10:30-4
CLOSED 24	25	26 Hand work Club 2-4	27 Knit Pickers' Club 2-4	28 Long Arm Rental Day	29	30 Sewing Apron with lots of pockets 10:30-4

## January classes

**T-Shirt Quilt Thursday Jan 13 from 1-4 & 27 from 10:30-4 \$35 Barb Boyer**

You will learn how to cut, stabilize and trim your t-shirts (first day). The second class will be all about designing and sewing your t-shirts together. Homework before the first class: Choose all your t-shirts and make sure they are washed. If you are confident, you can separate the front from the back at the shoulder seams. If you aren't, there is plenty of time in the first class. In the second class, I will help you design your quilt based upon your t-shirts – which means I'll help with all the math, provide options for getting both small & large t-shirts into the same quilt, and help you choose all the other fabrics (borders and sashings) to make your quilt special.

## February Classes

**Beginning Quilting 8 weeks \$65 Barb Boyer Starting Sun Feb 6.**

This comprehensive 8-week course will introduce to you almost everything you need to know about piecing a quilt top. Along the way you will learn about color, batting, thread, machines and various techniques to give you the skills to make almost any quilt.

**Buggy Barn/One Sister quilt Sat February 19 & 26 \$35 Jean Korber**

This cute quilt is made using the “Buggy Barn” technique, now called the One Sister technique. Fabrics are stacked, slashed, & re sewn, mixing the fabric so that each block uses the same fabric but in different positions.

**Crazy Quilt Day Saturday Feb 12, 1-4, and March 12 (1-4) & 19 (2-5) \$40 Barb Boyer**

It’s time to cut up and use all those old prom dresses, wedding dresses, brocade jackets, silk blouses, and velvet skirts that you are collecting in your closets and not wearing – you’ve grown out of them, you have no where to wear them, you’re never going to get married again or go to the prom and no one in your family wants them. So why are they still hanging in your closet? Day one, we will cut up those dresses into usable parts, to get them ready for piecing in crazy quilt blocks. We will also share out bounty with everyone in class. Don’t have anything in your closet to cut up? I bet Good Will has racks of interesting items. The next class, we will discuss (and start sewing) the crazy quilt blocks. You will need a foundation (of muslin, light weight cotton, sew in interfacing) for your piecing. The last class we will discuss (and start stitching) all the embellishments that crazy quilts are known for. You can make a small wall hanging, just one block (for framing & putting on the wall), or a larger quilt for the couch or bed.

**Elizabeth Hartman Quilts (your choice) Mon Feb 21 10:30-4 \$35 Barb Boyer**

EH quilts are all pieced, not paper pieced. They use the 45 degree/flip & sew method to create all sorts of fun animals: llamas, bees & beehive, swans, African animals, desert animals, forest creatures, dinosaurs. You can use any pattern you like and I’ll teach you how to organize, cut and stitch the blocks. You won’t finish during class, but you will get some or all of the quilt cut and some of it pieced.

**Wonton/Hex N More Saturday February 5 1-4 \$35 Barb Boyer**

Jaybird Quilts has many fun projects using the Hex N More ruler. The Wonton quilt is a perfect introduction. It uses only 8 different fabrics and can be made in any size you like. I’ll show you how to cut the blocks using the ruler, how to sew the blocks together, and then, most importantly, how to sew the rows together – which can be a little tricky keeping things lined up. It’s a perfect class for learning a new skill and a good introduction to the ruler. Coming this summer, look for additional quilts using the Hex N More ruler!

## March Classes

**Laura Heine Quilts (your choice) Sat March 26 10:30-4 \$35 Jean Korber**

LH quilts are collage quilts, built from a foundation by adding colorful prints in various shapes to create the quilt. Jean will walk you through the essentials, help you decide fabrics and placement, teach you about using the fusibles, and show you finishing techniques – from no sew to machine quilting. Then fun part of these quilts is choosing the fabrics to create your design, whether it’s a sloth, a cat, an owl, a horse or a day of the dead skeleton. You get to decide, plan, design and build your unique wall hanging.

**Northcott BOM Tips & Tricks Mar 5 1-3 Barb Boyer**

I will walk you through the last 6? Blocks, offering suggestions on cutting and piecing. I have a couple of different ways to do some of the parts on the blocks and some suggestions on cutting and sewing. If you have bought the kit and want some guidance, please feel free to attend. If you have not bought the kit, but are still interested, you can also come. Class is free.

**Panel Workshop Thursday March 10 1-4 (discussion, no sewing) \$30 Barb Boyer**

We all have panels, but we don't know what to do with them. I will show you how to turn your panel into a wall hanging or full sized quilt. We will discuss how to add blocks to "border" out the quilt, add lights to a Christmas or Halloween quilt, change patterns to fit your panel, chop up your panel into attic windows or other designs----so bring some of your panels to class and go home with a plan!

## April Classes

**Beginning Machine Applique Wed April 20 1-4 \$40 Barb Boyer**

Learn the basics of machine applique. I will teach you how to do the satin stitch and button hole (blanket stitch) around the edges of you applique, including doing points or tips (like on Christmas trees and stars), corners and curves. I will provide the samples for your practice. All you need is a foot that will allow wide (zig zag) stitching.

**Beginning Machine Quilting Wed April 6 1-4 \$40 Barb Boyer**

Learn the basics of machine quilting from start to finish: Getting the top pieced properly, pinning the quilt sandwich, choosing the pattern and thread, and quilting. You will practice on samples provide in class. You will need a hopping/darning foot as most of the class will focus on free motion quilting.

**Deb Tucker's Tumbling Blocks Saturday April 16 10:30-4 \$35 Jean Korber**

By Combining two contrasting fabrics you will create triangles tumbling down the quilt. Using your V Block tool, this quilt is fun and quick. Just jump right in and give it a whirl! It's fun to work with new rulers to create new and interesting blocks!

**Nova/SideKick Ruler Saturday April 2 1-4 \$35 Barb Boyer**

The SideKick ruler is another of the Jaybird Quilt rulers (Hex N More). The Nova pattern is for a table topper and you will learn how to cut a piece using the SideKick ruler. And just like the Wonton class it's a perfect class for learning a new skill and a good introduction to the ruler. I know it's really early to start thinking about it: But this table topper would be great in Christmas colors. I'm just saying..... Coming this summer, look for additional quilts using both the SideKick and Hex N More rulers!

**Sewing Apron with lots of pockets Sat April 30 10:30-4 \$30 Jean Korber**

You've seen Jean and her sewing apron that she wears during classes? One with all sorts of pockets for all the things you need to keep handy when you're sewing? Well, she's not teaching that apron (she'll you how she does it, though, in class). But she is teaching a similar apron pattern, with lots of pockets. You may even get the entire apron made in class! And think what fun gifts aprons would be for ..... Christmas! It's not too early to get started!

**Spiderweb Quilt April 9 (1-4) and 23 10:30-4 \$35 Barb Boyer**

This quilt incorporates strip piecing/panel sewing and 60 degree triangles. You will need a 60 degree triangle ruler (8 or 10 inch is the most useful size, but if you have the 12" which is used in Triangle Frenzy quilts, it will work just fine). You will also need lots of 2" scraps. I suggest cutting all your strips (or a bunch of them) prior to class. Most useful is 2" X 42", but shorter strips can also be used. Best colors are medium and dark—scrappy is fun! The first class is sewing & cutting the blocks. The second class is sewing the rows together: new skill learned is how to make the seams all meet properly!

# Sew Steady Products

I am a dealer in the Sew Steady Products. The Sew Steady tables offer an expanded work area around your machine, flush to the machine arm. Advantages of this table include a large surface that is flush to your machine, giving you plenty of space to lay your blocks flat before stitching.

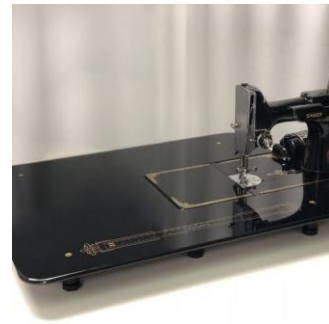
If your only “prep” surface is the tiny arm that only gives you about 1-2 inches before your fabric hits the needle, the Sew Steady Table is for you! Do I sound like an advertisement? What I can tell you is that when I teach classes and students are sewing long strips together, it is often hard for them to manage those strips when the only flat surface is the 1-2” surface right in front of the needle. The Sew Steady table (and it’s portable!) offers up to 8 inches of a flat surface.

Also, the Sew Steady products can include a “grid glider” which is a slick (it’s both slick and slick, if you get my meaning) surface that you adhere to the table and it helps your fabrics glide smoothly toward the needle. It also provides a “grid” with ¼” lines and a center line (for flying geese constructions) and other measuring lines. So helpful.

In addition, the Sew Steady Products include quilting rulers that can be used for machine quilting. With the large flat table, ruler use becomes easy (with a little practice).

Each table is built according to the specs of your machine, which means the tables are custom ordered. You decide which table (size, extras) you want, you let me know your specs (I will work with you to get the right measurements), I’ll place your order and in app. 3 weeks (it’s custom made remember) you will have your table!

If you’ve never seen a Sew Steady table, come to the shop and see the table I have attached to my Bernina. It’s wonderful!



## Nolting Quilting Machines

---



## Nolting Longarm Machines

Nolting has 5 main machines, each with different reaches: from 17" to 30" depending on the machine. They are sold with or without a frame, but after I saw & helped set up one of the steel frames this week, I recommend buying the frame. All machines, except for the Standard--the most economical machine-- have a stitch regulator. I recommend a stitch regulator. All machines can be equipped with a computer and there are a couple of different ones to choose from. In addition, you can get an extended table base so that you can use rulers, you can get larger bobbins on some of the models and on the frames you can get hydraulic lifts to raise and lower the tables. In the coming weeks, I will print out more information on each model.

The best entry level machine is the Fun Quilter. It comes in 17", 20" & 23" reach. It comes with the Intellistitch Equalizer stitch regulator, standard speed control, needle up/down, and fixed handles in the front & rear. This machine can also be equipped with a computer.

The Pro Machine has the Intellistitch Turbo stitch regulator, single stitch option, standard speed control, needle up/down and customizable handles in the front & rear. The Pro Machine comes in 20", 24" and 30" reach with 10-12" of inside height. There are easy dials on the front to set stitch length and other options. This machine can also be equipped with a computer.

The NV Machine is the newest in the fleet of Nolting machines. This machine has a touch screen with programmable stitch regulation. You can stitch in 4 different stitch modes plus single stitch and needle up/down. It also has an adjustable brightness LED work light. This machine can also be equipped with a computer.



**Normal Shop Hours:  
Monday-Saturday 10-6  
Sunday 1-5**

**Closed first Sunday of month (and some holidays)  
New Hours for Standard Time (starting Nov 7-March 13)**

**Monday-Saturday 10-5, closed Sundays unless a class is scheduled. Then we're open 1-5.  
Check the schedule.**

Join the fun and come feel the difference of quality fabrics.

Happy quilting!

Sincerely, Barbara Boyer  
Around the Block  
307-433-9555

[www.aroundtheblockquilts.com](http://www.aroundtheblockquilts.com)



