



February 11, 2022

This falls under the category of “who knew?” Lots of things fall into this category. But this one really surprised me because it’s been around since at least 2013 and the only reason I picked up on it was because it was a clue in a crossword puzzle.

And the other thing I’ll mention before I tell you what I’m talking about is a commercial for the new iPhone which baffled me a bit. I figured it was some cultural reference that I wasn’t hip to (I know that’s dated slang, but give me a break, I’m already 9 years behind).

So, who knew lumbersexual was a thing? For those of you out of the loop, a lumbersexual is a “young urban man who cultivates an appearance and style of dress (typified by a beard and plaid shirt) suggestive of a rugged outdoor lifestyle.” Webster’s. Now Outside Magazine defined it as someone who embraces the lumberjack aesthetic (plenty of plaid, flannel, and work boots) but who's never chopped down a tree in his life.”

And apparently all baristas are lumbersexuals. But I’ll get back to this in a moment. First we need to discuss lumberjacks.

The lure or mystic of the lumberjack began at the turn of the century. No, not this one, the last one. At that time, men who worked in cities (basic desk jobs) were in crisis – at least according to contemporary magazines and advice books. They were depressed, anxious, tired – essentially, they had lost their vigor. The problem took on epidemic proportions in the late 1800s and was declared a new disease called neurasthenia.

Now, if you were a women suffering from the same symptoms it was called hysteria, or course, and bed rest was ordered. But for men, the cure was for them to embrace their primitive masculinity. In other words, become a cowboy or a lumberjack. Get back to nature. Because, as every knows (another “who knew?”) chopping wood produces 15% more testosterone than competitive sports, like football. Granted football wasn’t invented

yet, but cowboys and lumberjacks were all over the place out west. And so Paul Bunyan was born.

I'm being slightly facetious. But Calvin Coolidge embraced the cowboy ethic, Teddy Roosevelt bought a ranch out west, and Tarzan was created. All around the same time. So back to baristas. They don't lift anything heavier than a latte. But I think many of them do wear plaid. And probably have beards. So I guess that makes them lumbersexuals. You don't actually have to be or act like a lumberjack. You just have to look like one.

As an aside, there are two other terms that I ran across while learning about lumbersexuals: Retrosexuals and metrosexuals. A retrosexual is a man who refuses to embrace metrosexual ideals. Seriously. I love it when a term is defined by another term that is not defined. For those of you who want to know, a heterosexual (I'm thinking we all know what this is) sophisticated urban male who enhances his appearance by fastidious grooming, including being comfortable getting pedicures and manicures, is a metrosexual. So maybe a retrosexual, being the opposite, is a lumbersexual? It's just so complicated.

Which brings me to the iPhone commercial. A young Latino kid is bicycling down the road bopping his head to some tune ("I Look Good" with lyrics, "I look real good today"). He's very in charge of himself, very confident. And he's wearing what looks like an oversized black and white check plaid jacket and plaid pants. Even his bike is painted in plaid. Red plaid. And as he pedals down the street, the iPhone camera is in selfie mode, filming him as he pedals along. He's nodding his head to the music, confident and secure. A man in a garage and a woman on the ground reading a book (she's also in plaid) nod at him, like he's a king passing by. Because he looks real good today.

And the commercial never made much sense to me, in part, because I never really thought he looked that good. Now, that's just a fashion statement by me, not intended to be critical, just that I never considered black and white checked plaid for a 13 year old to be fashionable. Like I said at the beginning, Who Knew? I'm guessing he's either embracing his inner lumberjack or there is some kind of fashion cultural thing going on here that I won't understand for another 8 or 9 years.

Kind like lumbersexual. Go Rams. Go Bengals. May it be a good game.

---



## **Delta Kappa Gamma**

*International Society of Women in Education*

# Used Book Sale

## March 5 & 6

*Saturday 8 a.m. to 6 p.m.*

*Sunday 9 a.m. to 3 p.m.*

**(MASKS WILL BE REQUIRED)**

**In the former Big Lots in Cheyenne Plaza**

**3741 East Lincolnway**

**(Next to Sportsman's Warehouse)**

**Please donate used books:**

***February 1 through 27***

**Collection locations:**

***Sale site (preferred option) hours are:***

Tuesdays 9am-12pm

Thursdays 1pm to 7pm

Sundays 1pm to 4pm

*Or drop books at*

***Safeway YMCA Both Albertson's  
Natural Grocers Gold's Gym***

If very large donation (within 10-mile radius),  
or unable to get to a box or sale location  
call **369-2940** or **421-1755** for appointment.  
Books must be boxed – on porch or in garage.

(Leave a message)

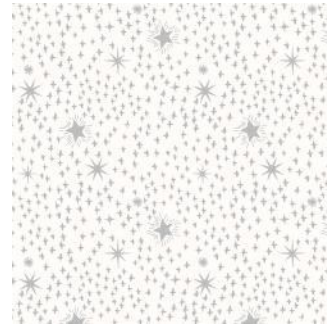
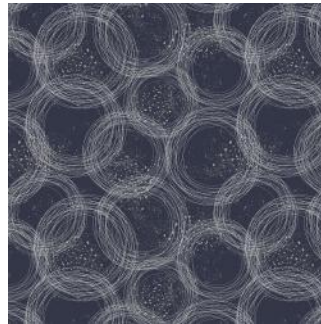
# Happy Valentines Day!

Be Mine is a scrap quilt made from my "stash" under the cutting table: All the left over ends of bolts, scraps and otherwise tossed fabric bits. **Be Mine**



---

## What's New



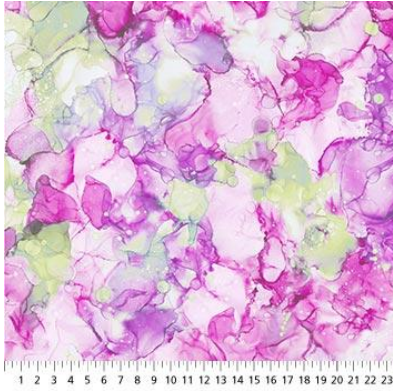
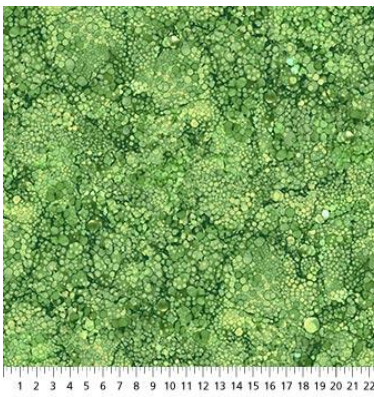
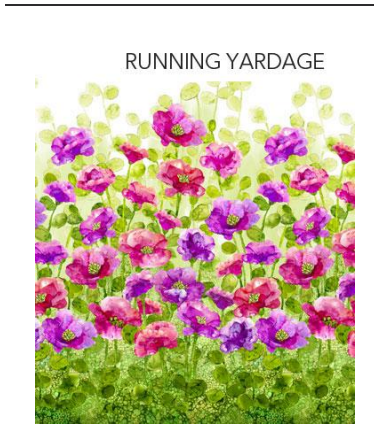
From RJR

---

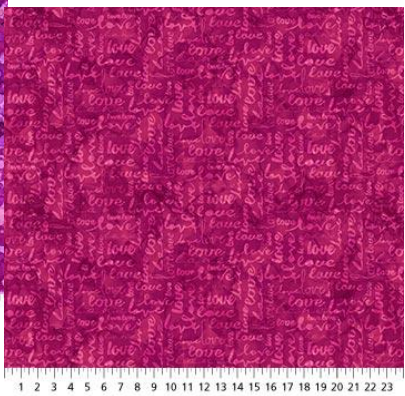
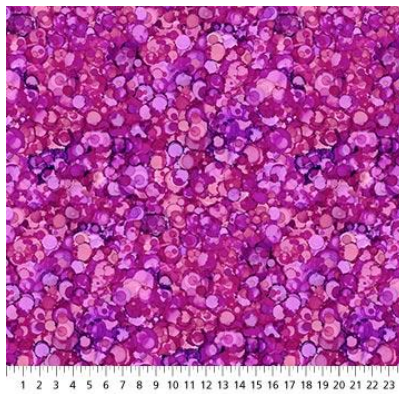
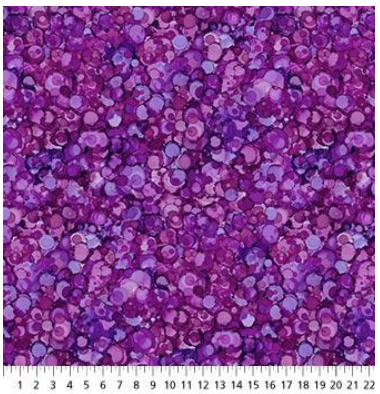
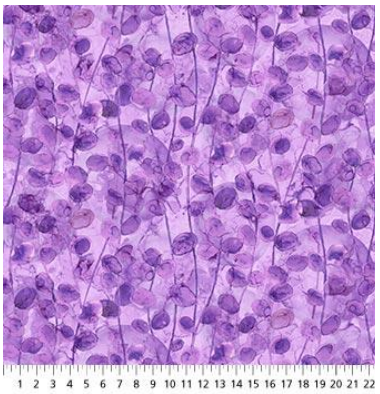
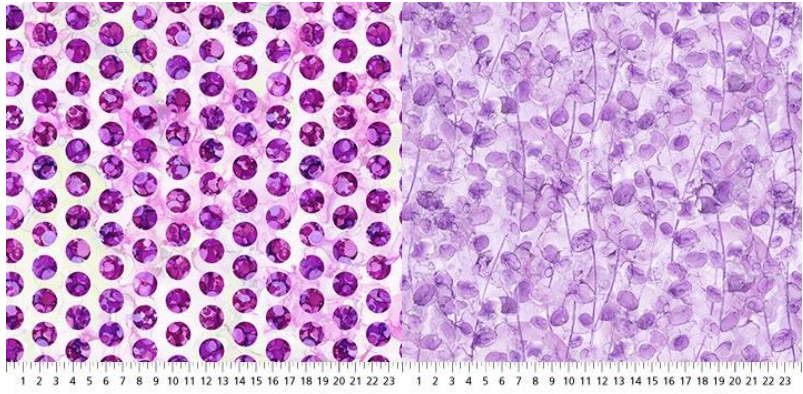
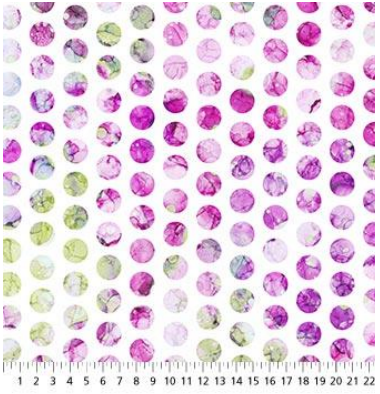




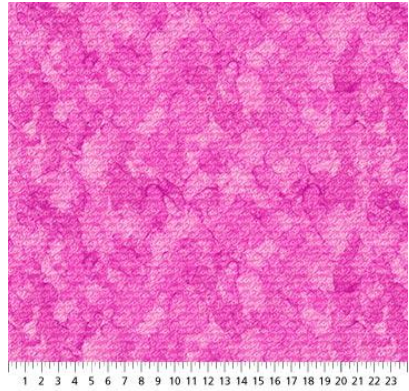
Northcott: Above quilt pattern



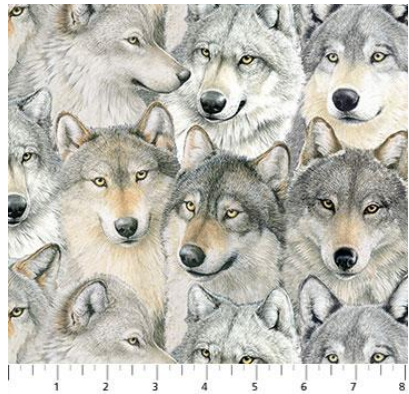
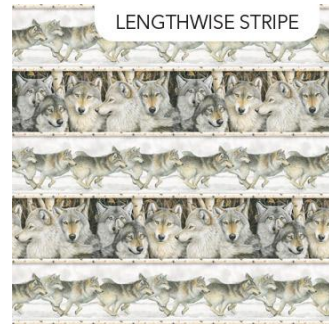
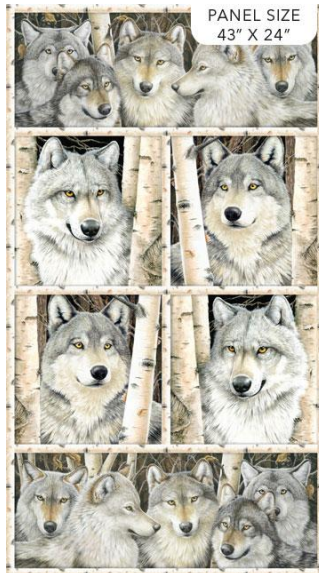








Northcott: We have one kit left





1 2 3 4 5 6 7 8 9 10 11



1 2 3 4 5 6 7 8 9 10 11 12



1 2 3 4 5 6 7 8 9 10 11 12



1 2 3 4 5 6 7 8 9 10 11



1 2 3 4 5 6 7 8 9 10 11 12



1 2 3 4 5 6 7 8 9 10 11 12

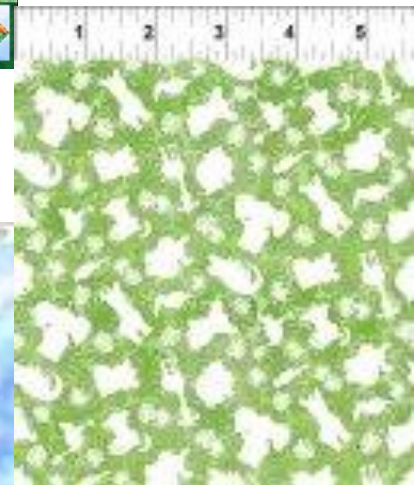
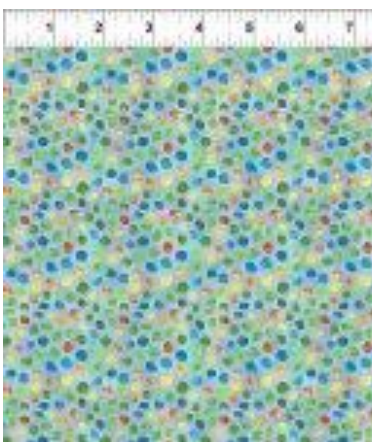


Riley Blake

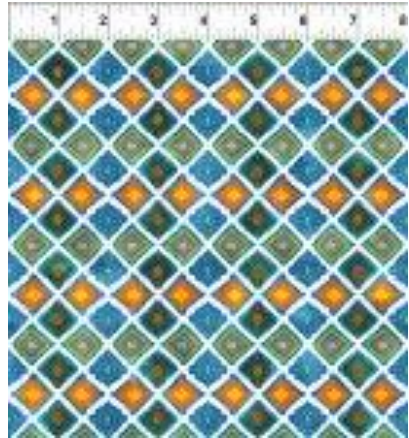




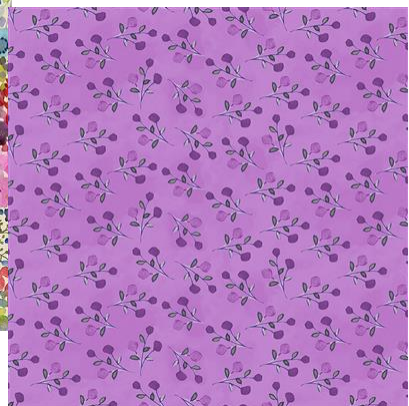
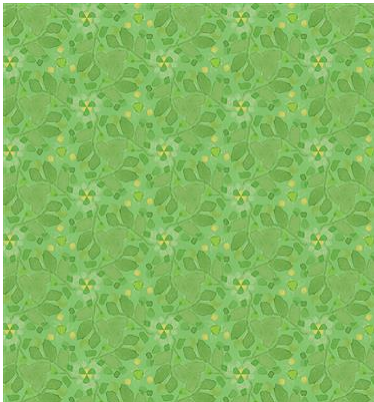
From In the Beginning: We made kits



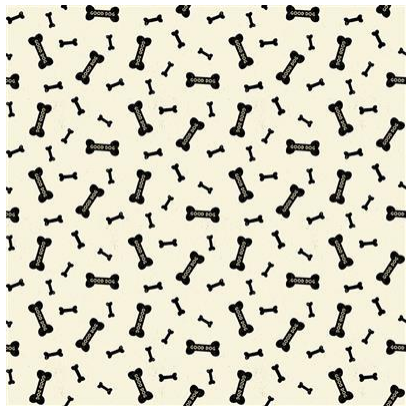




From Clothworks



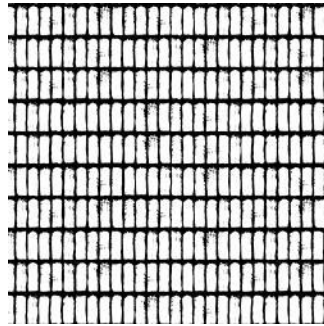
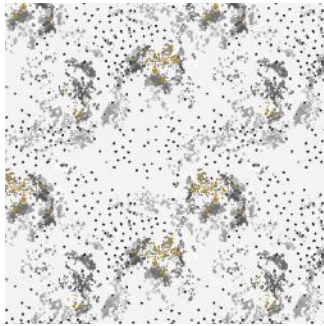






From Clothworks

---



From RJR

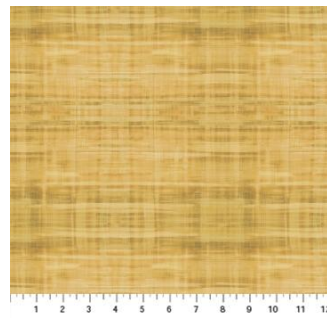


From Riley Blake

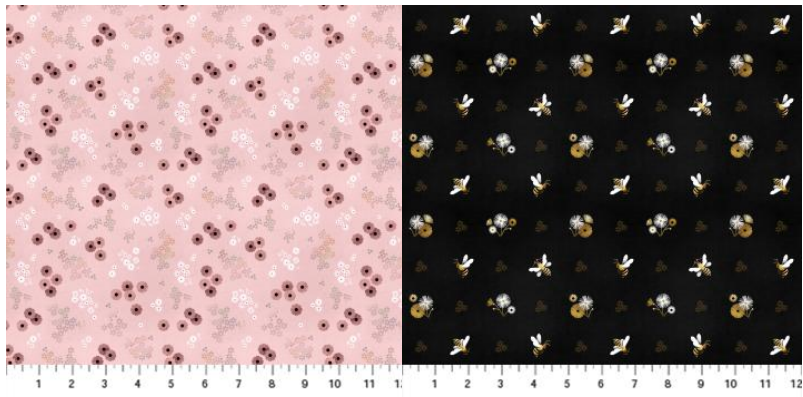
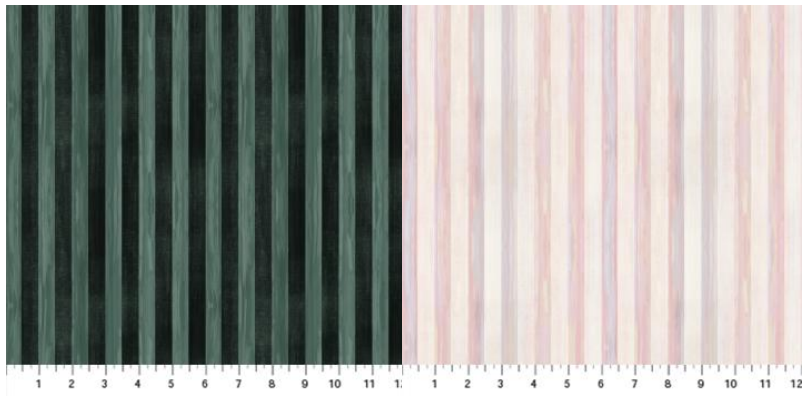
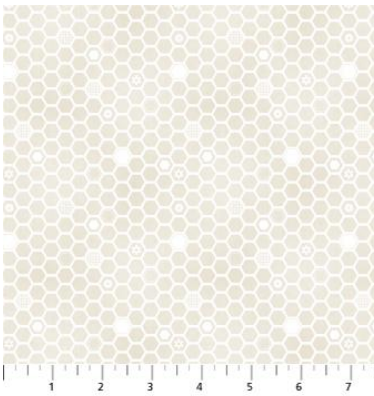
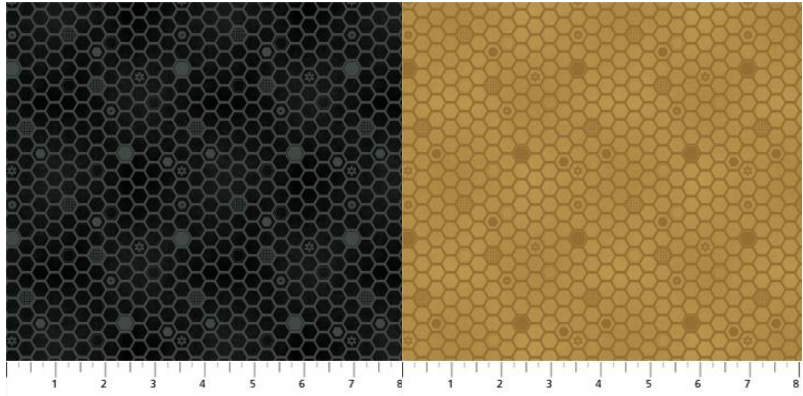




Northcott



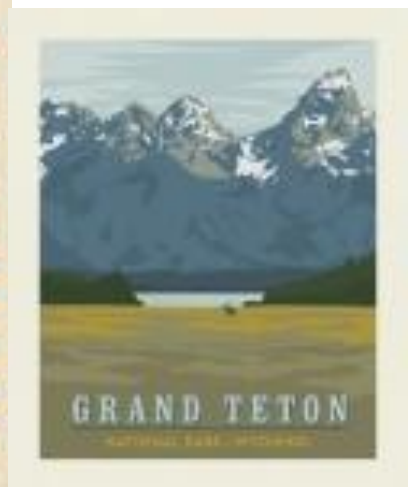
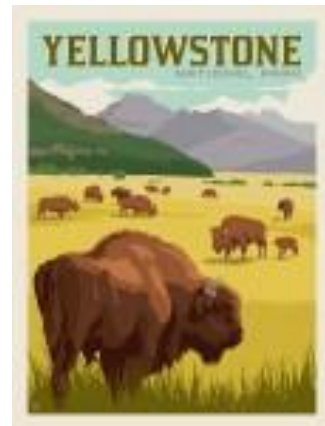
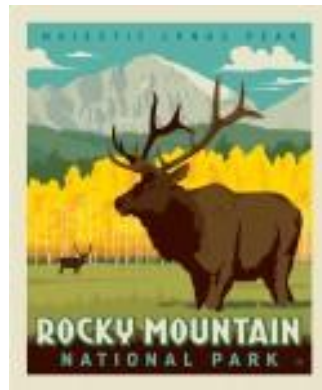




Northcott/Figo



Riley Blake (the 3 juvenile prints are flannel)





February 2022

Sunday	Monday	Tuesday	Wednesday	Thursday	Friday	Saturday
		1 Hand work Club 2-4	2 Long Arm class 10:30	3 Long Arm Rental Day	4	5 BOM 10:30 Wonton/Hex n More ruler quilt
6 Beginning Quilt 1-4	7	8 Hand work Club 2-4	9 Knit Pickers' Club 2-4	10 Long Arm Rental Day	11	12 Embroidery Club 10-noon Crazy Quilt Day 1-4
13 Beginning Quilt 1-4	14	15 Hand work Club 2-4	16 Long Arm class 10:30 Full moon	17 Long Arm Rental Day	18	19 Buggy Barn/One Sister 10:30-4
20 Beginning Quilt 1-4	21 Presidents' Day Elizabeth Hartman <a href="#">choose your</a>   favorite pattern	22 Hand work Club 2-4	23 Knit Pickers' Club 2-4	24 Long Arm Rental Day	25	26 Buggy Barn/One Sister 10:30-4
27 Beginning Quilt 1-4	28	Color of the month: red				

Sunday	Monday	Tuesday	Wednesday	Thursday	Friday	Saturday
		1	2 Long Arm class 10:30	3 Long Arm Rental Day	4	5 BOM 10:30 Northcott BOM tips and tricks 1-3
6 Beginning Quilt 1-4	7	8 Hand work Club 2-4	9 Knit Pickers' Club 2-4	10 Panel Workshop 1-4 Long Arm Rental Day	11	12 Embroidery Club 10-noon Crazy Quilt Day 1-4
13 Beginning Quilt 1-4	14	15 Hand work Club 2-4	16 Long Arm class 10:30	17 Long Arm Rental Day	18 Full moon	19 National Quilt Day Demos TBA Crazy Quilt Day
20 Beginning Quilt 1-4	21	22 Hand work Club 2-4	23 Knit Pickers' Club 2-4	24 Long Arm Rental Day	25	26 Laura Heine collages & working with <u>fusibles</u>
27 Beginning Quilt 1-4	28	29 Hand work Club 2-4	30	31 Long Arm Rental Day	Color of the month: green	



April							2022
Sunday	Monday	Tuesday	Wednesday	Thursday	Friday	Saturday	
Color of the month: yellow					1	2	
						BOM 10:30 Nova/Sidekick ruler quilt 1-5	
CLOSED 3	4	5	6	7	8	9	
		Hand work Club 2-4	Beginning Machine Quilting 1-4	Long Arm Rental Day		Embroidery Club 10-noon Spider web 1-5	
CLOSED 10	11	12	13	14	15	16	
		Hand work Club 2-4	Knit Pickers' Club 2-4	Long Arm Rental Day		Deb Tucker's Tumbling Triangle w/V Block Ruler	
CLOSED Easter 17	18	19	20	21	22	23	
		Hand work Club 2-4	Beginning Machine Applique 1-4	Long Arm Rental Day		Spider web 10:30-4	
CLOSED 24	25	26	27	28	29	30	
		Hand work Club 2-4	Knit Pickers' Club 2-4	Long Arm Rental Day		Sewing Apron with lots of pockets 10:30-4	

## February Classes

### **Beginning Quilting** 8 weeks \$65 Barb Boyer Starting Sun Feb 6.

This comprehensive 8-week course will introduce to you almost everything you need to know about piecing a quilt top. Along the way you will learn about color, batting, thread, machines and various techniques to give you the skills to make almost any quilt.

#### **Buggy Barn/One Sister quilt Sat February 19 & 26 \$35 Jean Korber**

This cute quilt is made using the "Buggy Barn" technique, now called the One Sister technique. Fabrics are stacked, slashed, & resewn, mixing the fabric so that each block uses the same fabric but in different positions.

#### **Crazy Quilt Day Saturday Feb 12, 1-4, and March 12 (1-4) & 19 (2-5) \$40 Barb Boyer**

It's time to cut up and use all those old prom dresses, wedding dresses, brocade jackets, silk blouses, and velvet skirts that you are collecting in your closets and not wearing – you've grown out of them, you have no where to wear them, you're never going to get married again or go to the prom and no one in your family wants them. So why are they still hanging in your closet? Day one, we will cut up those dresses into usable parts, to get them ready for piecing in crazy quilt blocks. We will also share out bounty with everyone in class. Don't have anything in your closet to cut up? I bet Good Will has racks of interesting

items. The next class, we will discuss (and start sewing) the crazy quilt blocks. You will need a foundation (of muslin, light weight cotton, sew in interfacing) for your piecing. The last class we will discuss (and start stitching) all the embellishments that crazy quilts are known for. You can make a small wall hanging, just one block (for framing & putting on the wall), or a larger quilt for the couch or bed.

**Elizabeth Hartman Quilts (your choice) Mon Feb 21 10:30-4 \$35 Barb Boyer**

EH quilts are all pieced, not paper pieced. They use the 45 degree/flip & sew method to create all sorts of fun animals: llamas, bees & beehive, swans, African animals, desert animals, forest creatures, dinosaurs. You can use any pattern you like and I'll teach you how to organize, cut and stitch the blocks. You won't finish during class, but you will get some or all of the quilt cut and some of it pieced.

## March Classes

**Laura Heine Quilts (your choice) Sat March 26 10:30-4 \$35 Jean Korber**

LH quilts are collage quilts, built from a foundation by adding colorful prints in various shapes to create the quilt. Jean will walk you through the essentials, help you decide fabrics and placement, teach you about using the fusibles, and show you finishing techniques – from no sew to machine quilting. Then fun part of these quilts is choosing the fabrics to create your design, whether it's a sloth, a cat, an owl, a horse or a day of the dead skeleton. You get to decide, plan, design and build your unique wall hanging.

**Northcott BOM Tips & Tricks Mar 5 1-3 Barb Boyer**

I will walk you through the last 6? Blocks, offering suggestions on cutting and piecing. I have a couple of different ways to do some of the parts on the blocks and some suggestions on cutting and sewing. If you have bought the kit and want some guidance, please feel free to attend. If you have not bought the kit, but are still interested, you can also come. Class is free.

**Panel Workshop Thursday March 10 1-4 (discussion, no sewing) \$30 Barb Boyer**

We all have panels, but we don't know what to do with them. I will show you how to turn your panel into a wall hanging or full sized quilt. We will discuss how to add blocks to "border" out the quilt, add lights to a Christmas or Halloween quilt, change patterns to fit your panel, chop up your panel into attic windows or other designs----so bring some of your panels to class and go home with a plan!

## April Classes

**Beginning Machine Applique Wed April 20 1-4 \$40 Barb Boyer**

Learn the basics of machine applique. I will teach you how to do the satin stitch and button hole (blanket stitch) around the edges of you applique, including doing points or tips (like on Christmas trees and stars), corners and curves. I will provide the samples for your practice. All you need is a foot that will allow wide (zig zag) stitching.

**Beginning Machine Quilting Wed April 6 1-4 \$40 Barb Boyer**

Learn the basics of machine quilting from start to finish: Getting the top pieced properly, pinning the quilt sandwich, choosing the pattern and thread, and quilting. You will practice on samples provide in class. You will need a hopping/darning foot as most of the class will focus on free motion quilting.

**Deb Tucker's Tumbling Blocks Saturday April 16 10:30-4 \$35 Jean Korber**

By Combining two contrasting fabrics you will create triangles tumbling down the quilt. Using your V



**Block tool, this quilt is fun and quick. Just jump right in and give it a whirl! It's fun to work with new rulers to create new and interesting blocks!**

**Nova/SideKick Ruler Saturday April 2 1-4 \$35 Barb Boyer**

The SideKick ruler is another of the Jaybird Quilt rulers (Hex N More). The Nova pattern is for a table topper and you will learn how to cut a piece using the SideKick ruler. And just like the Wonton class it's a perfect class for learning a new skill and a good introduction to the ruler. I know it's really early to start thinking about it: But this table topper would be great in Christmas colors. I'm just saying..... Coming this summer, look for additional quilts using both the SideKick and Hex N More rulers!

**Sewing Apron with lots of pockets Sat April 30 10:30-4 \$30 Jean Korber**

You've seen Jean and her sewing apron that she wears during classes? One with all sorts of pockets for all the things you need to keep handy when you're sewing? Well, she's not teaching that apron (she'll show you how she does it, though, in class). But she is teaching a similar apron pattern, with lots of pockets. You may even get the entire apron made in class! And think what fun gifts aprons would be for ..... Christmas! It's not too early to get started!

**Spiderweb Quilt April 9 (1-4) and 23 10:30-4 \$35 Barb Boyer**

This quilt incorporates strip piecing/panel sewing and 60 degree triangles. You will need a 60 degree triangle ruler (8 or 10 inch is the most useful size, but if you have the 12" which is used in Triangle Frenzy quilts, it will work just fine). You will also need lots of 2" scraps. I suggest cutting all your strips (or a bunch of them) prior to class. Most useful is 2" X 42", but shorter strips can also be used. Best colors are medium and dark—scrappy is fun! The first class is sewing & cutting the blocks. The second class is sewing the rows together: new skill learned is how to make the seams all meet properly!

## Sew Steady Products

I am a dealer in the Sew Steady Products. The Sew Steady tables offer an expanded work area around your machine, flush to the machine arm. Advantages of this table include a large surface that is flush to your machine, giving you plenty of space to lay your blocks flat before stitching.

If your only "prep" surface is the tiny arm that only gives you about 1-2 inches before your fabric hits the needle, the Sew Steady Table is for you! Do I sound like an advertisement? What I can tell you is that when I teach classes and students are sewing long strips together, it is often hard for them to manage those strips when the only flat surface is the 1-2" surface right in front of the needle. The Sew Steady table (and it's portable!) offers up to 8 inches of a flat surface.

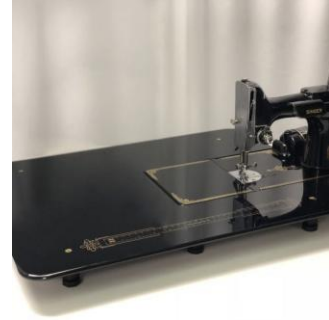
Also, the Sew Steady products can include a "grid glider" which is a slick (it's both slick and slick, if you get my meaning) surface that you adhere to the table and it helps your fabrics glide smoothly toward the needle. It also provides a "grid" with 1/4" lines and a center line (for flying geese constructions) and other measuring lines. So helpful.

In addition, the Sew Steady Products include quilting rulers that can be used for machine quilting. With the large flat table, ruler use becomes easy (with a little practice).

Each table is built according to the specs of your machine, which means the tables are custom ordered. You decide which table (size, extras) you want, you let me know your specs (I will work with you to get the right measurements), I'll place your order and in app. 3 weeks (it's custom made remember) you will have your table!

If you've never seen a Sew Steady table, come to the shop and see the table I have attached to my

Bernina. It's wonderful!



## Nolting Quilting Machines



## Nolting Longarm Machines

Nolting has 5 main machines, each with different reaches: from 17" to 30" depending on the machine. They are sold with or without a frame, but after I saw & helped set up one of the steel frames this week, I recommend buying the frame. All machines, except for the Standard--the most economical machine-- have a stitch regulator. I recommend a stitch regulator. All machines can be equipped with a computer and there are a couple of different ones to choose from. In addition, you can get an extended table base so that you can use rulers, you can get larger bobbins on some of the models and on the frames you can get hydraulic lifts to raise and lower the tables. In the coming weeks, I will print out more information on each model.

The best entry level machine is the Fun Quilter. It comes in 17", 20" & 23" reach. It comes with the Intellistitch Equalizer stitch regulator, standard speed control, needle up/down, and fixed handles in the front & rear. This machine can also be equipped with a computer.

The Pro Machine has the Intellistitch Turbo stitch regulator, single stitch option, standard speed control, needle up/down and customizable handles in the front & rear. The Pro Machine comes in 20", 24" and 30" reach with 10-12" of inside height. There are easy dials on the front to set stitch length and other options. This machine can also be equipped with a computer.

The NV Machine is the newest in the fleet of Nolting machines. This machine has a touch screen with progra



mmable stitch regulation. You can stitch in 4 different stitch modes plus single stitch and needleup/down. It also has an adjustable brightness LED work light. This machine can also be equipped with a computer.

---

**Normal Shop Hours:**  
**Monday-Saturday 10-6**  
**Sunday 1-5**  
**Closed first Sunday of month (and some holidays)**  
**New Hours for Standard Time (starting Nov 7-March 13)**  
**Monday-Saturday 10-5, closed Sundays unless a class is scheduled. Then we're open 1-5.**  
**Check the schedule.**

Join the fun and come feel the difference of quality fabrics.

Happy quilting!

Sincerely, Barbara Boyer  
Around the Block  
307-433-9555

[www.aroundtheblockquilts.com](http://www.aroundtheblockquilts.com)

