



November 5, 2021

## Finish Your Quilt Sale is Back!

**First Saturday of the Month Backing, Binding and Batting is on sale at 20%.** The catch? You have to have a finished quilt top **AND** you have to bring that top in for show & tell. It must be completely ready for the next step: Quilting!

We have wool batting, 80/20 from Winline and Quilter's Dream, 100% cotton white from Quilter's Dream batting in the select flavor, Dream Orient (silk, bamboo & cotton) and 100% cotton natural from Quilter's Dream in the request flavor. So lots to choose from.

I love advertisements. Well, some of them. Well, maybe a few. Well, maybe only during the Super Bowl. I, like most people, watch the Super Bowl for the ads. Occasional the game is noteworthy, but the teams are rarely ones I follow, so I don't know the players, and I don't have an interest in who wins. If the game is good, then I watch. If it's a blow out, I fast forward to the commercials.

But with most of my tv watching, I've previously taped what I want. That way I don't have to watch any commercials if I don't want to. But....

Sometimes commercials can be the best things on television. Like the Geico ads. The camel ad about hump day, the Halloween ad where everyone runs into the scary building rather than choosing the running car to escape, the "happier than a witch in a broomstick factory" ad, the new home owners with either a "fencing" problem, a "clogging" problem or an "aunt/ant" problem, and others. Or all the Subaru ads with the golden retriever family. I make sure to rewind when I spot those ads so I can watch from start to finish.

But lately I have become over annoyed at some of the ads that mostly run on the non network cable channels. I assume the ad rates on these channels are low, because not only do the ads run multiple times over the course of one show, they are also clearly made on a very limited budget.

For example. Have you seen the moving talking butts? The butts talk about wanting you to buy a ticket to a concert, any concert because the butt has been home too long and it wants to go out for some fun, and it twitches back & forth while it talks. I don't think the ad is selling anything specific, just the concept of going to something that requires you to buy a ticket. I can't wait for this company to run out of money.

Or...all of the Medicare ads that will continue to run at least into December, but don't count on it. Every year Medicare eligibles can switch their add-on health packages. And the big insurance companies really want your business. And the business obviously brings in multi millions to these companies or how else could they afford all the ads. (Actually, it's a little more complicated than that but you're better off running the Google searches yourself and reading the news articles from Forbes or a newspaper for more info. Stay away from the ads and the insurance company websites until you are armed with good info.)

These commercials are very misleading and border on being illegal -- truth in advertising laws. The problem is, the ads deliver limited info which, while usually correct, are not the whole story. I also find the extreme pushiness of the ads offensive: various actors demanding, "I want every benefit that I deserve," "where's my additional benefits?" "I want to make sure I'm not missing out." The ads play on egos, because of course none of us wants to miss out on things that we deserve and are entitled to have.

The ads also rely on catchy phrases delivered by celebrities and others, like Joe Namath or William Shatner or Jimmy Walker, the "Dyn-O-Mite" kid on the 1970s tv show Good Times: "And remember the calls to the Medicare hotlines for more information are FREE!!!!" Well of course they are. Talk about an over the top ad that I can't wait to go away.

Or...the ads that rhyme. I don't know why this is happening (and I've spotted it more than once) but bad poetry never should be permitted in ads. Like the Blue Federal Credit Union ad that ends with the catchy phrase, "Blue it." The dialog in this commercial is so bad that it makes your 6<sup>th</sup> grade poems look like Shakespeare wrote them. And it really makes no sense. It reminds me a little of the rhyming for sake of rhyming in the song American Pie: "Drove my Chevy to the levee but the levee was dry." "Now, for ten years we've been on our own, and moss grows fat on a rollin' stone." "The courtroom was adjourned, no verdict was returned." "Jack be nimble Jack be quick, Jack Flash sat on a candlestick "cause fire is the devil's only friend." I'm sorry, but if there is hidden meaning in those lyrics other than Don McLean needing words that rhyme, I haven't found it. It's catchy, I'll give you that, and I understand what the overall purpose for the song is, but seriously...moss grows fat on a rolling stone?

And finally, the ad with no dialog at all. No talking. Just intense drumming music that crescendos to a close when the picture appears of the partners in the law firm of Dan Caplis, advertising for Righteous Injury cases. Good grief. Makes me yearn for the ambulance chasing attorney ads.

And remember, I'm an attorney.

---

## Sew Steady Products

I am a dealer in the Sew Steady Products. The Sew Steady tables offer an expanded work area around your machine, flush to the machine arm. Advantages of this table include a large surface that is flush to your machine, giving you plenty of space to lay your blocks flat before stitching.

If your only “prep” surface is the tiny arm that only gives you about 1-2 inches before your fabric hits the needle, the Sew Steady Table is for you! Do I sound like an advertisement? What I can tell you is that when I teach classes and students are sewing long strips together, it is often hard for them to manage those strips when the only flat surface is the 1-2” surface right in front of the needle. The Sew Steady table (and it’s portable!) offers up to 8 inches of a flat surface.

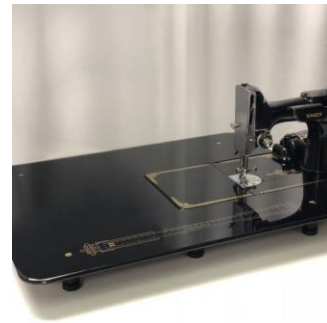
Also, the Sew Steady products can include a “grid glider” which is a slick (it’s both slick and slick, if you get my meaning) surface that you adhere to the table and it helps your fabrics glide smoothly toward the needle. It also provides a “grid” with ¼” lines and a center line (for flying geese constructions) and other measuring lines. So helpful.

In addition, the Sew Steady Products include quilting rulers that can be used for machine quilting. With the large flat table, ruler use becomes easy (with a little practice).

I will eventually put some pictures of the products in the newsletter, but for now take a look at the [sewsteady.com](http://sewsteady.com) for the wide variety of products. And the pics below.

Each table is built according to the specs of your machine, which means the tables are custom ordered. You decide which table (size, extras) you want, you let me know your specs (I will work with you to get the right measurements), I’ll place your order and in app. 3 weeks (it’s custom made remember) you will have your table!

If you’ve never seen a Sew Steady table, come to the shop and see the table I have attached to my Bernina. It’s wonderful!

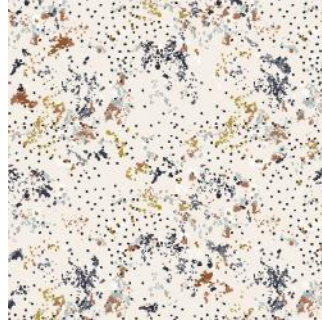


---

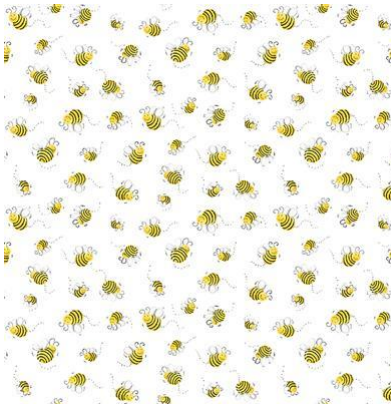
**New Hours for winter. During Standard Time (Nov. 7 thru March 13), I will have new closing hours. M-S 10-5. Sundays will be closed unless I have a class scheduled. Hours for those Sundays are 1-5. Check the schedule to see if a class is being held.**

**Also I have added Machine Quilting on your domestic machine on Thursday Nov 18 from 1-4, and Machine Applied Binding on Saturday Dec. 18, 1-4.**

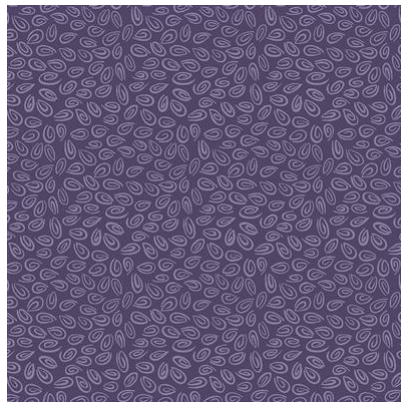
# What's New

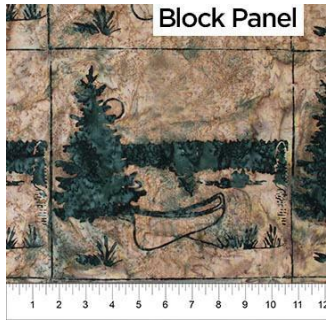
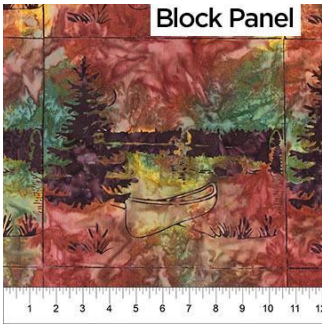


From Cotton+Steele

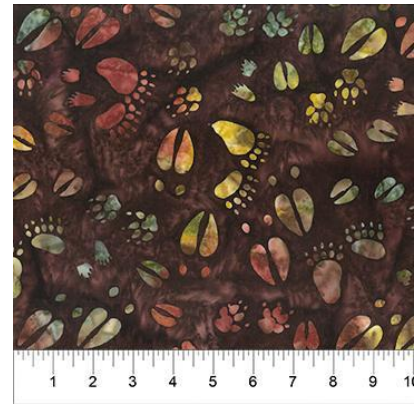
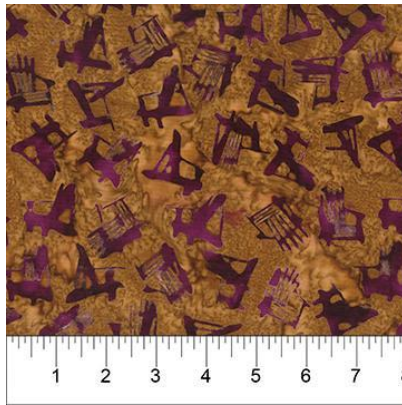


From Clothworks

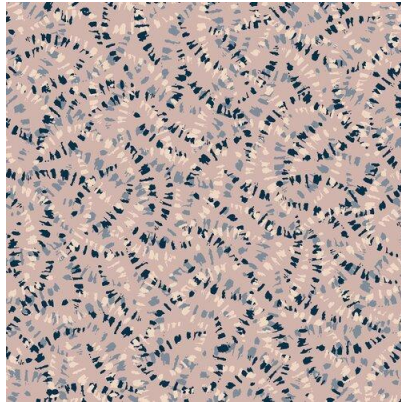




From Banyon Batiks

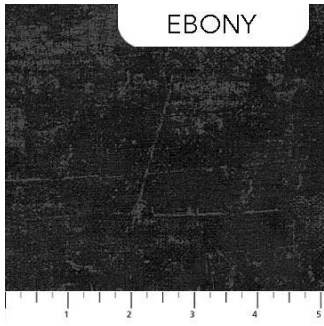


From Dashwood

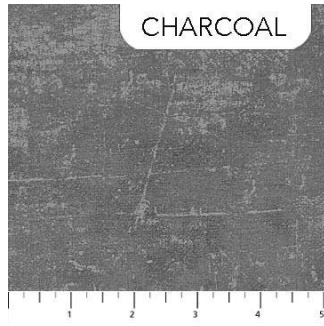


From Alexander Henry

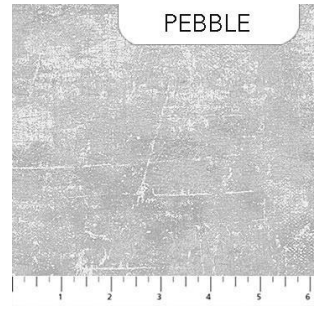




EBONY

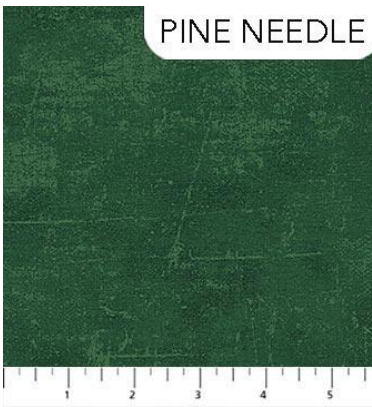


CHARCOAL

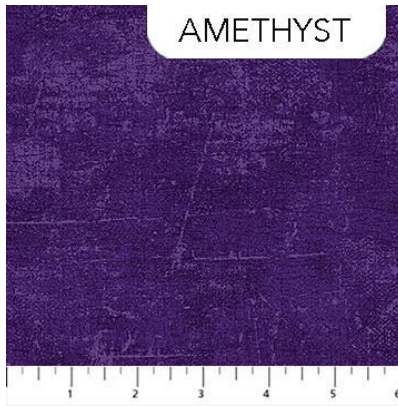


PEBBLE

From Northcott



PINE NEEDLE



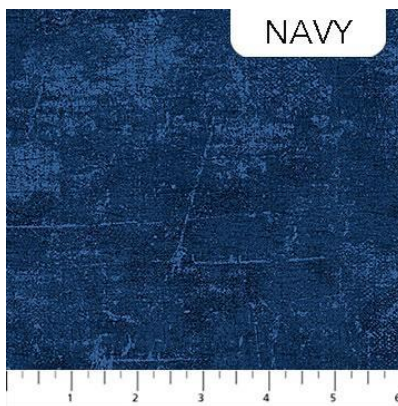
AMETHYST



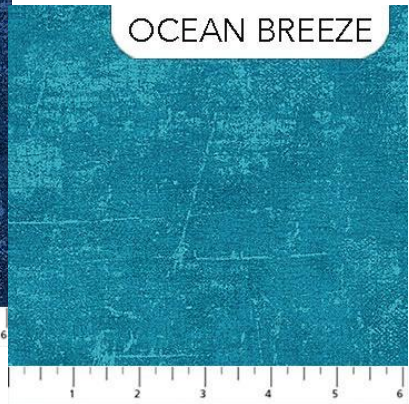
PEACOCK



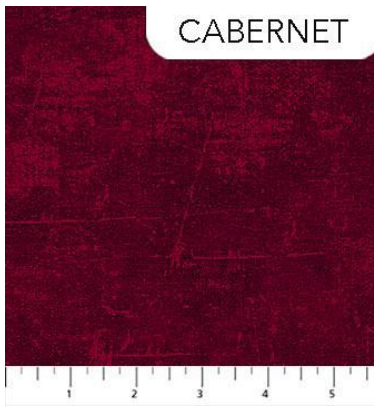
BLUE JEANS



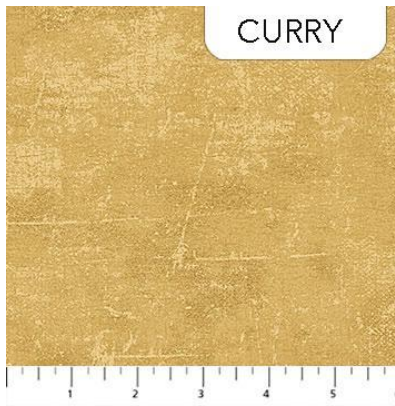
NAVY



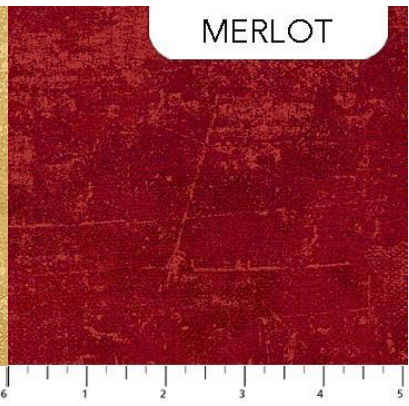
OCEAN BREEZE



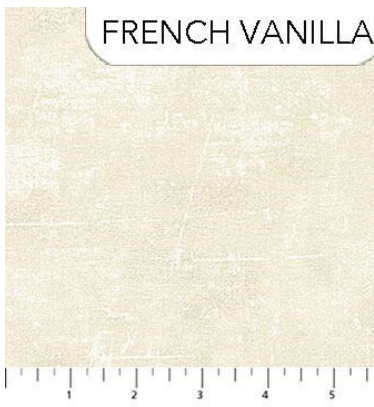
CABERNET



CURRY



MERLOT



FRENCH VANILLA



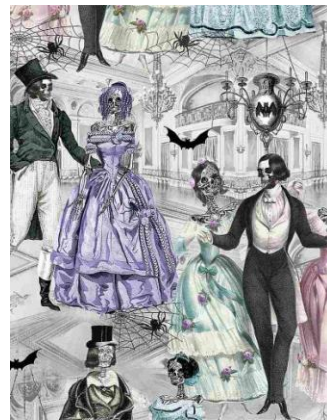
CAFE AU LAIT



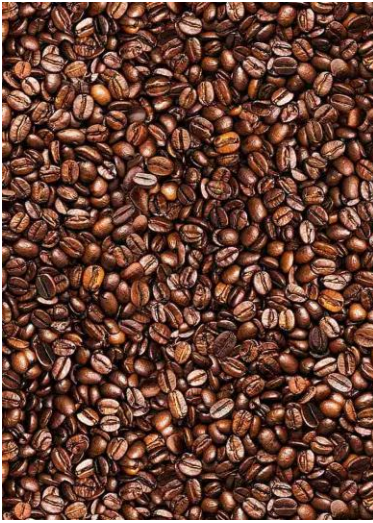
COFFEE BEAN



From Timeless Treasures







Dear Stella

Y



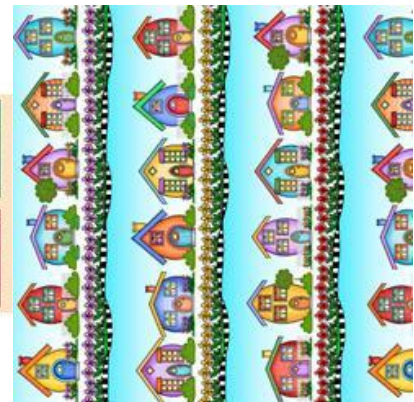
RJR



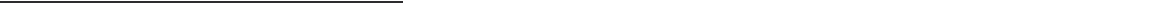


Art Gallery

---



From QT





From Riley Blake:



Note: I have added Machine Quilting on your domestic machine on Thursday Nov 18 from 1-4, and Machine Applied Binding on Saturday Dec. 18, 1-4.

---

## **Continued Store Policies**

**Masks will be required for entering and shopping in the store, even if you are vaccinated. This policy is subject to change, depending on whether the pandemic gets under control. We have been allowing vaccinated persons to come into the store without masks this summer, but because of break through covid cases, it is becoming clear that the recent variants are getting stronger than our vaccines. If you do not have a mask with you, and wish to shop I will sell you a mask that you can then just keep in the car. Or if you know what you want you can tell/call me and we can do a "curbside" business like we did last year.**

### **Class policies for the Fall Semester**

**I welcome anyone who has been vaccinated to attend classes. If you have not been fully vaccinated, for any reason, I ask that you choose not to attend classes this fall. Perhaps by spring, if the pandemic comes under control, I will change this policy. Classes that are small in number, you will be able to choose whether you wear a mask or not. Larger classes, like block of the month, masks will be required. I will be masked regardless of class size.**

## November 2021

Sunday	Monday	Tuesday	Wed	Thur	Fri	Saturday
	1	2	3	4	5	6 BOM 10:30 Pumpkin Wall Hanging by One <u>Sister</u> <u>1-4</u> Wool Club 4:30-6
7 CLOSED	8	9 Hand work Club 2-4	10 Knit Pickers' Club 2-4	11 Trip Around the World 10:30-6	12	13 Embroidery Club 10- noon Pumpkin Wall Hanging 1-5
14 Beginning Quilting 1- 4	15	16 Hand work Club 2-4	17	18 Machine Quilting on Domestic Machine 1-4	19 Full moon	20 Krista Moser's Bespoke Stars 10:30-4
21 <u>Pillow case</u> party 1-4	22	23 Hand work Club 2-4	24 Knit Pickers' Club 2-4	25 Thanksgiving CLOSED	26 Black Friday Sale	27 Shop Small Business Sale
28 CLOSED	29	30 Hand work Club 2-4	Color of the month: flannels			

# December 2021

Sunday	Monday	Tuesday	Wed	Thur	Fri	Saturday
			1	2	3	4 BOM 10:30 Embroidered Treasures/English paper piecing 2-4 Wool Club 4:30-6
5	6	7	8	9	10	11
CLOSED		Hand work Club 2-4	Knit Pickers' Club 2- 4	Technique class: Squaring Up: Triangles, flying geese, blocks 2- 3		Embroidery Club 10-noon  Paper Pieced Penguin gift bag 1-5
12 Closed	13	14 Hand work Club 2-4	15	16	17	18 Full moon Machine Applied Binding 1-4
19	20	21 Hand work Club 2-4	22 Knit Pickers' Club 2-	23	24 CLOSED	25 Christmas CLOSED
26 CLOSED	27	28 Hand work Club 2-4	29	30 Toad <u>Toter</u> Sale	31 SALE	CLOSED  Color of the month: red

## Ongoing Clubs

**Block of the Month** First Sat of month 10:30-11:15 FREE Barb Boyer



Join at any time. You get a free fat quarter if you come to class with the previous month's completed block. This year the challenge will be houses and seasons. Each row will have houses, trees and other "neighborhood" objects. Each house will have a place for a pieced block. Each "row" will be a season: Spring, Summer, Fall and Winter. We'll also have a quilt store, school, "village" shops, church, outhouse, dog house, barn – as many as I can squeeze in!

**Hand Embroidery Club** 2<sup>nd</sup> Sat. of the month, 10-noon FREE Kathy Sconce

If you want to learn to hand embroider or just brush up your technique, join us on the second Saturday of the month from 10 to noon. You can work on your own projects or you can join the project we are doing. We are doing Crabapple Hill's Snow Days. This is an embroidered and pieced block. So we will help you through the piecing, tracing and embroidery.

**Knit Pickers' Club** 2<sup>nd</sup> and 4<sup>th</sup> Wed of each month, 2-5 Carol Moler (**NOTE: time is 2-5, not 4 as calendar shows**)

We are changing up the Knit Pickers Club. We're going to knit 2 days a month every second and fourth Wednesday, and we'll start earlier in the day at 2 and go to 5. The Club is open to all skill levels. We want to share what we've learned, find new patterns, and simply just sit and knit. We may work on some felting projects, fingerless mittens, mittens, and socks.

**Hand Sewing Club** every Tuesday afternoon 2-4

This club is open to everyone. Bring your hand sewing (embroidery, binding, knitting, crochet, etc) and sit & stitch. During covid, we sit 6 feet apart and wear our masks, but at least we can share our projects, get a little stitching done and just enjoy the companionship.

## ONGOING CLASSES

**Techniques Thursdays Sept 9, Oct 14, Dec 9, 2-3 \$10 Barb Boyer**

**Dec 9: Tips on how to square up any block, including flying geese, by just using basic Creative Grid Rulers. You don't need specialty rulers to square up your blocks! Learn to use what you already own.**

**Wool Club Sat Oct 2 4:30-6 \$35 Barb Boyer Ongoing, each 1<sup>st</sup> Sat of the month**

Each month we will do a small seasonal, associated to the month, mini wool hanging. We have a collection of 12 different patterns, and if you buy the entire collection you will get a wooden plaque for displaying each mini every month. We will start on November's mini to make sure you get it done before November gets here. So we will stay only one month ahead, giving you incentive to get each mini done. The patterns are not kitted, but we have plenty of wool for sale and we also have some extra bits & pieces for some of the small parts that the shop will contribute to the cause.

NOTE: Pictures of the quilts are in the Fall Newsletter Class description newsletter. I will begin to incorporate them into this newsletter, but I will wait until next week.

## November Classes

### **Pumpkin Patch wall hanging/throw Sat Nov 6 (1-4) & 13 (1-5) \$35 Barb Boyer**

This cute quilt is made using the "Buggy Barn" technique, now called the One Sister technique. Fabrics are stacked, slashed, & resewn, mixing the fabric so that each block uses the same fabric but in different positions: Pumpkin, star, background, stem. The challenge in this particular quilt is to group your colors into big and little pumpkins. Which is why we are allowing two sessions for this quilt, just in case.

### **Trip Around the World Thursday (Veterans' Day) Nov 11 10:30-6 \$35 Barb Boyer**

This stripped quilt is made with In The Beginning precut strips. We have 4 kits only. But .... You can make this quilt with your own fabrics, cut into 2 ½" strips. The class is one day only, but that's all you'll need to understand how to sew the panels and put the quilt together. Finish it up quickly and you'll have a beautiful quilt for a Christmas gift.

### **Krista Moser's Bespoke Stars Sat Nov 20 \$35 Jean Korber**

Krista has done it again, designing a compelling new quilt using the Creative Grids 60 degree triangle ruler. If you have not done one of her quilts, sign up early, because she has quite a following who love the quilts and love the class. This quilt is colorful, with white stars centered in the middle of colorful spokes. It's a wonderful first quilt if you have never used the 60 degree triangle ruler.

### **Pillow Case Party Sun Nov 21 1-4 FREE**

Learn a special way to make a "hot dog" or "burrito" pillowcase. I have some quick cutting techniques that will make the pillowcase easy to stitch. All you need for class is fabric for your pillowcase and your machine.

## December Classes

### **Paper Pieced Penguin gift bag Sat Dec 11 1-5 \$35 Barb Boyer**

This is a basic paper pieced penguin that goes on the front of a basic bag pattern. But if you've never done paper piecing this is a perfect way to get started. The book has other patterns that you can choose, so if you don't like penguins, you could substitute Santa. This is the cutest gift bag for the holidays and the greatest part! It's reusable!

## Ongoing Classes & Clubs

### **Block of the Month** First Sat of month 10:30-11:15 FREE Barb Boyer

Join at any time. You get a free fat quarter if you come to class with the previous month's completed block. This year the challenge will be house and seasons. Each row will have houses, trees and other "neighborhood" objects. Each house will have a place for a pieced block. Each "row" will be a season: Spring, Summer, Fall and Winter. We'll also have a quilt store, school, "village" shops, church, outhouse, dog house, barn - as many as I can squeeze in!

### **Hand Embroidery Club** 2<sup>nd</sup> Sat. of the month, 10-noon FREE Kathy Sconce

**Note: January class will be held on the third Saturday**

If you want to learn to hand embroider or just brush up your technique, join us on the

second Saturday of the month from 10 to noon. You can work on your own projects or you can join the project we are doing. We will be starting Crabapple Hill's Snow Days. This is an embroidered and pieced block. So we will help you through the piecing, tracing and embroidery.

**Knit Pickers' Club** 2<sup>nd</sup> and 4<sup>th</sup> Wed of each month, 2-5 Carol Moler  
We are changing up the Knit Pickers= Club. We=re going to knit 2 days a month every second and fourth Wednesday, and we=ll start earlier in the day at 2 and go to 5. The Club is open to all skill levels. We want to share what we've learned, find new patterns, and simply just sit and knit. We may work on some felting projects, fingerless mittens, mittens, and socks.

**Hand Sewing Club** every Tuesday afternoon 2-4  
This club is open to everyone. Bring your hand sewing (embroidery, binding, knitting, crochet, etc) and sit & stitch. During covid, we sit 6 feet apart and wear our masks, but at least we can share our projects, get a little stitching done and just enjoy the companionship.

\*\*\*\*\*

## CLUBS

### **HAND EMBROIDERY CLUB FREE!**

If you want to learn to hand embroider or just brush up your technique, join us on the second Saturday of the month from 10 to noon. You can work on your own projects or you can join the project we are doing.

\*\*\*\*\*

### **Hand Work Club FREE!**

Every Tuesday afternoon from 2-4, join us to just sit & hand stitch, crochet, bind, or knit group. Bring what you're working on, sit up at the table in front by the window and work on your projects for a while. You can get advice & suggestions from your fellow quilters and share your experiences about your projects.

\*\*\*\*\*

### **Knit Pickers' Club FREE!**

This is another get-together class to sit & knit, work on our projects, share information and get some help. We will share techniques, suggest patterns, but mainly we'll sit & knit (or pick). We are discussing trying to do a group project meaning everyone does the same pattern. Each month we will learn a different pattern, make it into a square and eventually put all the squares into one project a bag, scarf, bag, etc.

\*\*\*\*\*

### **Block of the Month Club FREE!**

First Saturday of the Month, 10:30-11:15. Join at any time. You get a free fat quarter

if you come to class with the previous month's completed block.

\*\*\*\*\*

### **Toad Toters Club**

On full moon days (as noted in the calendar) you will get 20% off all purchases (not otherwise discounted) that you can fit in your bag. You must bring your bag to participate.

Full Moon Days: June 24, July 23, August 27

Discount Policy

We will honor only one discount -- whichever is largest. You can't combine a 10% with a 25% discount to get a 35% discount. On this we can't be bribed.

**Color of the Month:**

**November -- flannels; December -- red**

## **Nolting Quilting Machines**



## **Nolting Longarm Machines**

Nolting has 5 main machines, each with different reaches: from 17" to 30" depending on the machine. They are sold with or without a frame, but after I saw & helped set up one of the steel frames this week, I recommend buying the frame. All machines, except for the Standard--the most economical machine-- have a stitch regulator. I recommend a stitch regulator. All machines can be equipped with a computer and there are a couple of different ones to choose from. In addition, you can get an extended table base so that you can use rulers, you can get larger bobbins on some of the models and on the frames you can get hydraulic lifts to raise and lower the tables. In the coming weeks, I will print out more information on each model.

The best entry level machine is the Fun Quilter. It comes in 17", 20" & 23" reach. It comes with the Intellistitch Equalizer stitch regulator, standard speed control, needle up/down, and fixed handles in the front & rear. This machine can also be equipped with a computer.

The Pro Machine has the Intellistitch Turbo stitch regulator, single stitch option, standard speed control, needle up/down and customizable handles in the front & rear. The Pro Machine comes in 20", 24" and 30" reach with 10-12" of inside height. There are easy dials on the front to set stitch length and other options. This machine can also be equipped with a computer.

The NV Machine is the newest in the fleet of Nolting machines. This machine has a touch screen with programmable stitch regulation. You can stitch in 4 different stitch modes plus single stitch and needle up/down. It also has an adjustable brightness LED work light. This machine can also be equipped with a computer.

Nolting also has a commercial machine with the Intellistitch Equalizer stitch regulator, standard speed control, needle up/down, and fixed handles in the front & rear. This machine can also be equipped with a computer.

---

**Normal Shop Hours:**  
**Monday-Saturday 10-6**  
**Sunday 1-5**  
**Closed first Sunday of month (and some holidays)**  
**New Hours for Standard Time (starting Nov 7-March 13)**  
**Monday-Saturday 10-5, closed Sundays unless a class is scheduled. Then we're open 1-5.**  
**Check the schedule.**

Join the fun and come feel the difference of quality fabrics.

Happy quilting!

Sincerely, Barbara Boyer  
Around the Block  
307-433-9555  
[www.aroundtheblockquilts.com](http://www.aroundtheblockquilts.com)

