

# **DON'T FORGET!**

## **Black Friday and Shop Small Business Saturday Sale!**

Because we have a lot and because we know you don't have any (just kidding), all Christmas fabric is 25% off on Friday and Saturday after Thanksgiving. Christmas fabric around here rarely goes on sale, and when it does, it's in July. So this sale is special. Even if you have all your gifts finished for this year (you can stop laughing any time) there is no reason not to stock up for next. Get a jump of 2022.

Also, all tone on tone, including batiks are on sale for 20% off. Tone on tone means green on green, blue on blue, etc. Only one color, not multiple colors. I'll admit this is an odd sale but.....the reason for this sale is we are starting a MYSTERY!

The Mystery Quilt will start up in December and run into the next year (hint: lots of pieces, but easy peasy piecing). You need 25 fat quarters of tone on tone colors--every color in the rainbow: reds, oranges, yellows, greens, blues, indigos and violets, in medium and dark tones (stay away from pale colors).

And you need 25 fat quarters of background (think tone on tone whites, creams, etc). For the colors, I recommend 25 different fabrics. For the backgrounds, you can double up on the fats (2 or 3 of the same fabric) or buy yardage (you need a total of 5-6 yards of background).

You also need an extra 2 1/2 yards of a background. Hint: it's a big quilt, and you will have some leftovers. But this is a great sale and because I know what the quilt will look like (so does Jean) we can help you buy the right colors for this marvelous quilt!



**November 24, 2021**

## **Finish Your Quilt Sale is Back!**

**First Saturday of the Month Backing, Binding and Batting is on sale at 20%.** The catch? You have to have a finished quilt top **AND** you have to bring that top in for show & tell. It must be completely ready for the next step: Quilting!

We have wool batting, 80/20 from Winline and Quilter's Dream, 100% cotton white

from Quilter's Dream batting in the select flavor, Dream Orient (silk, bamboo & cotton) and 100% cotton natural from Quilter's Dream in the request flavor. So lots to choose from.

"Becca...what are you doing?" It's always dangerous to ask a mini Australian Shepherd what she's up to. Especially a red mini, with sad manipulating eyes and a penchant for cunningness, whose name is Becca.

"I'm making my Christmas list," she said.

"It's a little early for a Santa Claus letter, don't you think?"

"Mail's going to be slow this year," she said. "Gotta start early." She's gotta point, there. She might be opinionated, but she's not always wrong.

"So what's on your list?" I cringed as I said that. Sometimes you just don't want to know.

"It's not a list for me; it's a list for Cassidy, Padfoot, and Mags," she said.

"Not me, too?"

"You have your own money," Becca said. "Buy what you want." See what I mean? Never ask a mini Aussie a question that you don't want to know the answer.

"So what are you getting them?" Shudder. Another question.

"Perfectly useless gifts," Becca pronounced.

"And, I hate to ask, why?"

"Isn't that what Christmas is all about?" she replied. "Back in 1912 there was even a society dedicated to giving perfectly useless gifts. I'm just trying to maintain the tradition." While Becca isn't necessarily wrong about things, she often doesn't get the whole story. Kinda like just reading the headlines from one news source.

"Becca, you're talking about the Society for the Prevention of Useless Giving," I told her. "Not the Society for Useless Giving. You left out an important word. The Society was started in 1912 in New York by rich socialtes..."

"Yeah, 'cause they didn't want to have to buy gifts for everyone at Christmas," Becca said. "Like Scrooge."

"Just listen, Becca. These rich women were against the exploitation of junior employees by their supervisors. Back then, employees gave their bosses gifts, sometimes very extravagant ones, in order to curry favor. And because women employees made so much less than their male counterparts, this practice hit them much harder in the pocketbook."

“We’re talking 1912, right?” Becca asked snidely. I ignored her.

“So these rich women held rallies, promoted female solidarity and recruited up to 6,000 members in an effort to reduce Christmas gift giving. The Society, or SPUG for short, mainly had female members, but even President Teddy Roosevelt joined the cause. The Society sputtered out after 1914 because of WWI, but over the years it has reemerged for various reasons.

“The Society wanted to promote what they believed was the true spirit of Christmas giving and reduce the number of exchanges just for exchange purposes, like Secret Santas where you buy an office worker whom you may not even know a \$10 gift. Or like in the Harry Potter books, buying more presents each year for Dudley because he expects it.... Becca?

Becca had tuned me out. She was back making her list.

“So what useless gifts are you getting for Cassidy, Padfoot and Mags?” I asked her. “A funny costume with reindeer antlers?”

“Nope, you convinced me to get something useful, instead. Cassidy is getting a bag of bone treats and the cats are getting heated outdoor pads that you can put into the dog houses.”

“Becca, that’s very thoughtful,” I told her, somewhat amazed.

Becca looked over her shoulder and had this wicked kind of grin on her face.

“Oh, I get it, ” I said. “Treats you can steal and heated pads you can co-opt.”

“At least they won’t be useless,” she grinned and trotted outside.

---

## Sew Steady Products

I am a dealer in the Sew Steady Products. The Sew Steady tables offer an expanded work area around your machine, flush to the machine arm. Advantages of this table include a large surface that is flush to your machine, giving you plenty of space to lay your blocks flat before stitching.

If your only “prep” surface is the tiny arm that only gives you about 1-2 inches before your fabric hits the needle, the Sew Steady Table is for you! Do I sound like an advertisement? What I can tell you is that when I teach classes and students are sewing long strips together, it is often hard for them to manage those strips when the only flat surface is the 1-2” surface right in front of the needle. The Sew Steady table (and it’s portable!) offers up to 8 inches of a flat surface.

Also, the Sew Steady products can include a “grid glider” which is a slick (it’s both slick and slick, if you get my meaning) surface that you adhere to the table and it helps your fabrics glide smoothly toward the

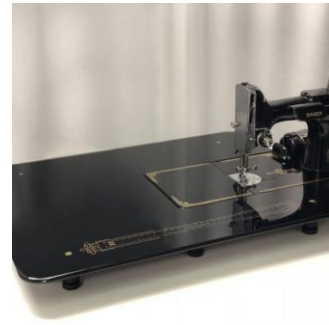
needle. It also provides a “grid” with ¼” lines and a center line (for flying geese constructions) and other measuring lines. So helpful.

In addition, the Sew Steady Products include quilting rulers that can be used for machine quilting. With the large flat table, ruler use becomes easy (with a little practice).

I will eventually put some pictures of the products in the newsletter, but for now take a look at the [sewsteady.com](http://sewsteady.com) for the wide variety of products. And the pics below.

Each table is built according to the specs of your machine, which means the tables are custom ordered. You decide which table (size, extras) you want, you let me know your specs (I will work with you to get the right measurements), I’ll place your order and in app. 3 weeks (it’s custom made remember) you will have your table!

If you’ve never seen a Sew Steady table, come to the shop and see the table I have attached to my Bernina. It’s wonderful!



---

**New Hours for winter. During Standard Time (Nov. 7 thru March 13), I will have new closing hours. M-S 10-5. Sundays will be closed unless I have a class scheduled. Hours for those Sundays are 1-5. Check the schedule to see if a class is being held.**

**Also I have added Machine Quilting on your domestic machine on Thursday Nov 18 from 1-4, and Machine Applied Binding on Saturday Dec. 18, 1-4.**

**What's New**

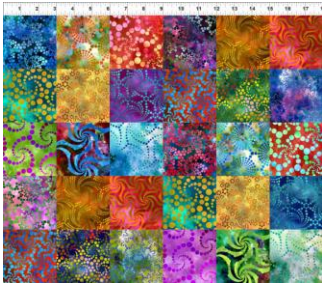


There is more Hoffman fabrics, but the website wouldn't let me download the images for some reason. The fabrics are used in this quilt, and we have kits!

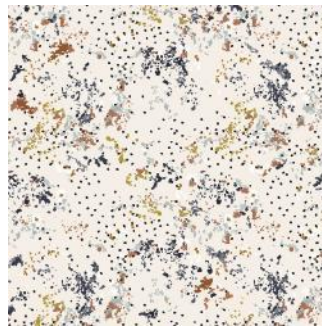
*Light as a Feather Quilt Kit*



From Hoffman

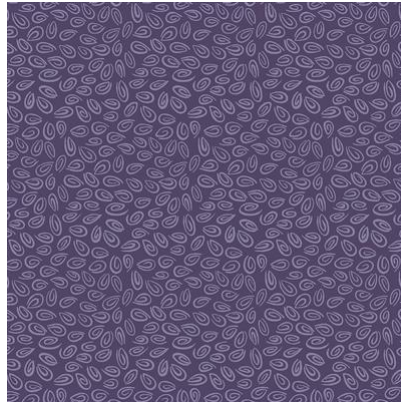
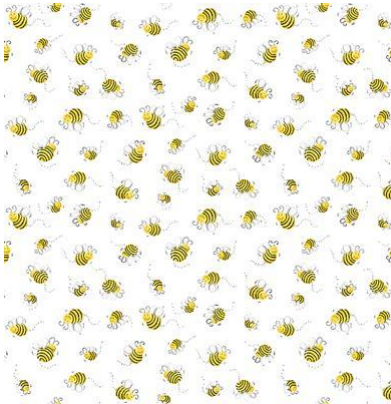


In the Beginning

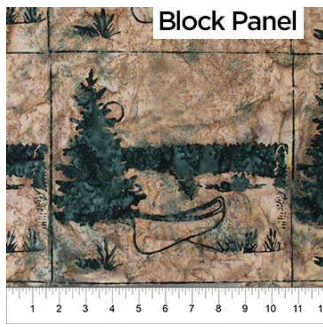
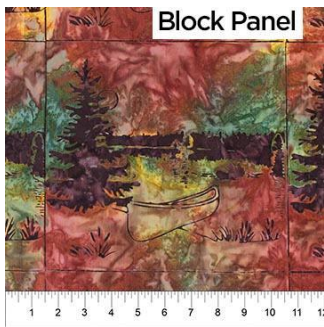




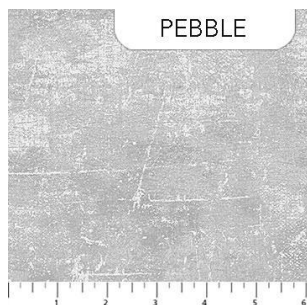
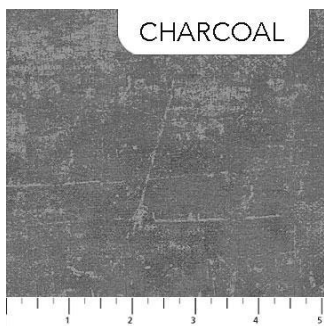
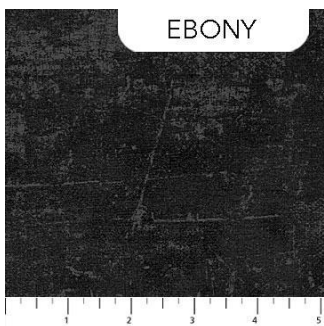
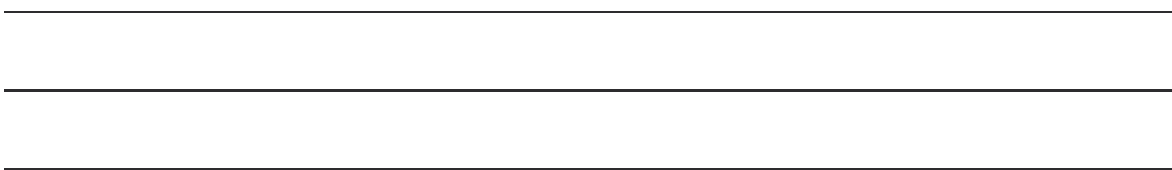
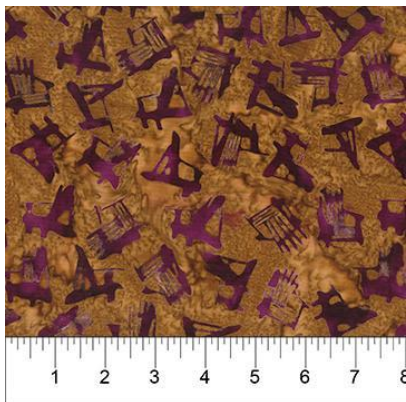
From Cotton+Steele



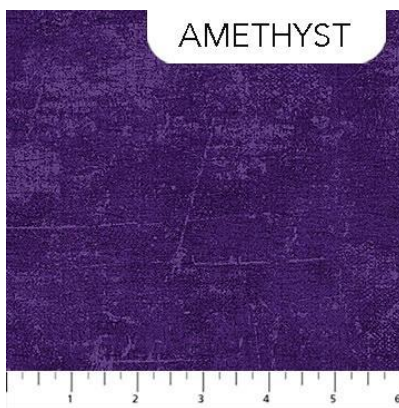
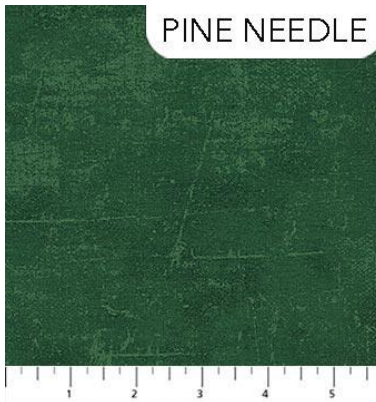
From Clothworks



From Banyon Batiks



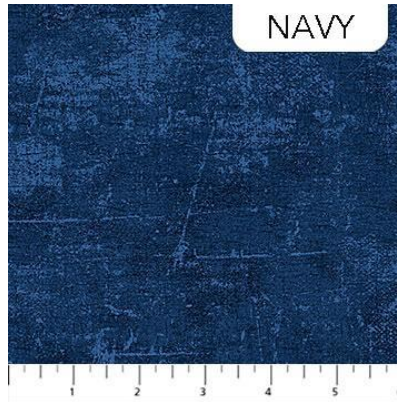
From Northcott



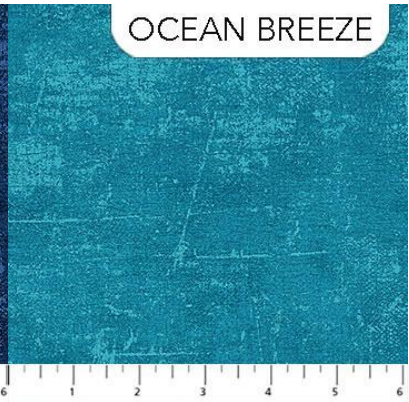




BLUE JEANS



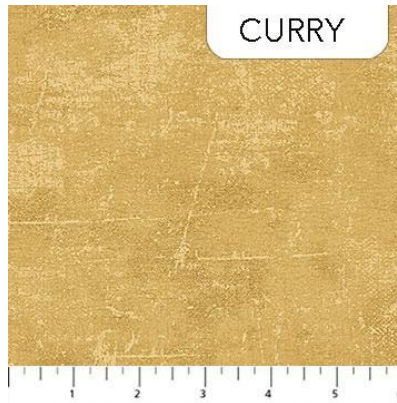
NAVY



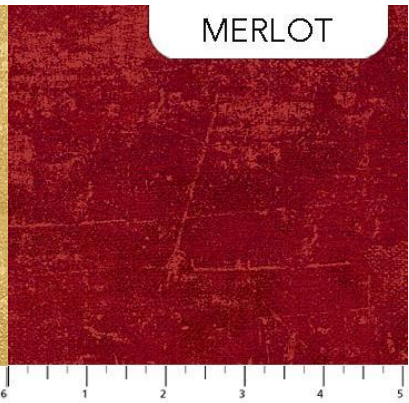
OCEAN BREEZE



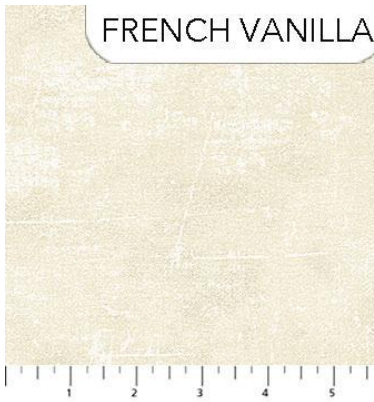
CABERNET



CURRY



MERLOT



FRENCH VANILLA



CAFE AU LAIT



COFFEE BEAN

---

---

---





RJR





Art Gallery

---

---

---





From Riley Blake:



Note: I have added Machine Quilting on your domestic machine on Thursday Nov 18 from 1-4, and Machine Applied Binding on Saturday Dec. 18, 1-4.

---

### Continued Store Policies

**Masks will be required for entering and shopping in the store, even if you are vaccinated. This policy is subject to change, depending on whether the pandemic gets**



under control. We have been allowing vaccinated persons to come into the store without masks this summer, but because of break through covid cases, it is becoming clear that the recent variants are getting stronger than our vaccines. If you do not have a mask with you, and wish to shop I will sell you a mask that you can then just keep in the car. Or if you know what you want you can tell/call me and we can do a “curbside” business like we did last year.

### Class policies for the Fall Semester

I welcome anyone who has been vaccinated to attend classes. If you have not been fully vaccinated, for any reason, I ask that you choose not to attend classes this fall. Perhaps by spring, if the pandemic comes under control, I will change this policy. Classes that are small in number, you will be able to choose whether you wear a mask or not. Larger classes, like block of the month, masks will be required. I will be masked regardless of class size.

November 2021						
Sunday	Monday	Tuesday	Wed	Thur	Fri	Saturday
	1	2	3	4	5	6 BOM 10:30 Pumpkin Wall Hanging by One <u>Sister</u> <u>1-4</u> Wool Club 4:30-6
7 CLOSED	8	9 Hand work Club 2-4	10 Knit Pickers' Club 2-4	11 Trip Around the World 10:30-6	12	13 Embroidery Club 10- noon Pumpkin Wall Hanging 1-5
14 Beginning Quilting 1- 4	15	16 Hand work Club 2-4	17	18 Machine Quilting on Domestic Machine 1-4	19 <b>Full moon</b>	20 Krista Moser's Bespoke Stars 10:30-4
21 <u>Pillow case</u> party 1-4	22	23 Hand work Club 2-4	24 Knit Pickers' Club 2-4	25 Thanksgiving CLOSED	26 <b>Black Friday Sale</b>	27 Shop Small Business Sale
28 CLOSED	29	30 Hand work Club 2-4	Color of the month: flannels			

Note the changes to the December schedule. No technique class on Thursday, moved the Penguin paper pieced class to Dec 16, added the machine binding class on the 18th, and am closed on all Sundays.

If you are interested in the Gift Bag/Penguin paper pieced class, please let me know. If you are coming to the Machine Binding Class, you will need a small, already quilted project plus fabric for binding. The small project can be anything and it's best if it's about 30" X 30", not much bigger or smaller. It can be rectangular; doesn't have to be square. Please don't cut the binding before class. I will demonstrate cutting the binding and sewing it on. Then you will cut your binding and sew it onto your project.

# December 2021



Sunday	Monday	Tuesday	Wed	Thur	Fri	Saturday
			1	2	3	4 BOM 10:30 Wool Club 4:30-6
5 CLOSED	6	7 Hand work Club 2-4	8 Knit Pickers' Club 2- 4	9	10	11 Embroidery Club 10-noon
12 CLOSED	13	14 Hand work Club 2-4	15	16 Paper Pieced Penguin gift bag 1-5	17	18 Full moon Machine Pieced Binding 1-4
19 CLOSED	20	21 Hand work Club 2-4	22 Knit Pickers' Club 2-	23	24 CLOSED	25 Christmas CLOSED
26 CLOSED	27	28 Hand work Club 2-4	29	30 Toad Toter Sale	31 SALE	CLOSED Color of the month: red
CLOSED						





## Ongoing Clubs

**Block of the Month** First Sat of month 10:30-11:15 FREE Barb Boyer

Join at any time. You get a free fat quarter if you come to class with the previous month's completed block. This year the challenge will be houses and seasons. Each row will have houses, trees and other "neighborhood" objects. Each house will have a place for a pieced block. Each "row" will be a season: Spring, Summer, Fall and Winter. We'll also have a quilt store, school, "village" shops, church, outhouse, dog house, barn – as many as I can squeeze in!

**Hand Embroidery Club** 2<sup>nd</sup> Sat. of the month, 10-noon FREE Kathy Sconce

If you want to learn to hand embroider or just brush up your technique, join us on the second Saturday of the month from 10 to noon. You can work on your own projects or you can join the project we are doing. We are doing Crabapple Hill's Snow Days. This is an embroidered and pieced block. So we will help you through the piecing, tracing and embroidery.

**Knit Pickers' Club** 2<sup>nd</sup> and 4<sup>th</sup> Wed of each month, 2-5 Carol Moler (**NOTE: time is 2-5, not 4 as calendar shows**)

We are changing up the Knit Pickers Club. We're going to knit 2 days a month every second and fourth Wednesday, and we'll start earlier in the day at 2 and go to 5. The Club is open to all skill levels. We want to share what we've learned, find new patterns, and simply just sit and knit. We may work on some felting projects, fingerless mittens, mittens, and socks.

**Hand Sewing Club** every Tuesday afternoon 2-4

This club is open to everyone. Bring your hand sewing (embroidery, binding, knitting, crochet, etc) and sit & stitch. During covid, we sit 6 feet apart and wear our masks, but at least we can share our projects, get a little stitching done and just enjoy the companionship.

## ONGOING CLASSES

**Techniques Thursdays Sept 9, Oct 14, Dec 9, 2-3 \$10 Barb Boyer**

**Dec 9: Tips on how to square up any block, including flying geese, by just using basic Creative Grid Rulers. You don't need specialty rulers to square up your blocks! Learn to use what you already own.**

**Wool Club Sat Oct 2 4:30-6 \$35 Barb Boyer Ongoing, each 1<sup>st</sup> Sat of the month**

Each month we will do a small seasonal, associated to the month, mini wool hanging. We have a collection of 12 different patterns, and if you buy the entire collection you will get a wooden plaque for displaying each mini every month. We will start on November's mini to make sure you get it done before November gets here. So we will stay only one month ahead, giving you incentive to get each mini done. The patterns are not kitted, but we have plenty of wool for sale and we also have some extra bits & pieces for some of the small parts that the shop will contribute to the cause.

NOTE: Pictures of the quilts are in the Fall Newsletter Class description newsletter. I will begin

to incorporate them into this newsletter, but I will wait until next week.

## November Classes

### **Pumpkin Patch wall hanging/throw Sat Nov 6 (1-4) & 13 (1-5) \$35 Barb Boyer**

This cute quilt is made using the "Buggy Barn" technique, now called the One Sister technique. Fabrics are stacked, slashed, & re sewn, mixing the fabric so that each block uses the same fabric but in different positions: Pumpkin, star, background, stem. The challenge in this particular quilt is to group your colors into big and little pumpkins. Which is why we are allowing two sessions for this quilt, just in case.

### **Trip Around the World Thursday (Veterans' Day) Nov 11 10:30-6 \$35 Barb Boyer**

This striped quilt is made with In The Beginning precut strips. We have 4 kits only. But .... You can make this quilt with your own fabrics, cut into 2 1/2" strips. The class is one day only, but that's all you'll need to understand how to sew the panels and put the quilt together. Finish it up quickly and you'll have a beautiful quilt for a Christmas gift.

### **Krista Moser's Bespoke Stars Sat Nov 20 \$35 Jean Korber**

Krista has done it again, designing a compelling new quilt using the Creative Grids 60 degree triangle ruler. If you have not done one of her quilts, sign up early, because she has quite a following who love the quilts and love the class. This quilt is colorful, with white stars centered in the middle of colorful spokes. It's a wonderful first quilt if you have never used the 60 degree triangle ruler.

### **Pillow Case Party Sun Nov 21 1-4 FREE**

Learn a special way to make a "hot dog" or "burrito" pillowcase. I have some quick cutting techniques that will make the pillowcase easy to stitch. All you need for class is fabric for your pillowcase and your machine.

## December Classes

### **Paper Pieced Penguin gift bag Sat Dec 11 1-5 \$35 Barb Boyer**

This is a basic paper pieced penguin that goes on the front of a basic bag pattern. But if you've never done paper piecing this is a perfect way to get started. The book has other patterns that you can choose, so if you don't like penguins, you could substitute Santa. This is the cutest gift bag for the holidays and the greatest part! It's reusable!

## Ongoing Classes & Clubs

### **Block of the Month First Sat of month 10:30-11:15 FREE Barb Boyer**

Join at any time. You get a free fat quarter if you come to class with the previous month's completed block. This year the challenge will be houses and seasons. Each row will have houses, trees and other "neighborhood" objects. Each house will have a place for a pieced block. Each "row" will be a season: Spring, Summer, Fall and Winter. We'll also have a quilt store, school, "village" shops, church, outhouse, dog house, barn - as many as I can squeeze in!

### **Hand Embroidery Club 2<sup>nd</sup> Sat. of the month, 10-noon FREE Kathy Sconce**

#### **Note: January class will be held on the third Saturday**

If you want to learn to hand embroider or just brush up your technique, join us on the

second Saturday of the month from 10 to noon. You can work on your own projects or you can join the project we are doing. We will be starting Crabapple Hill's Snow Days. This is an embroidered and pieced block. So we will help you through the piecing, tracing and embroidery.

**Knit Pickers' Club** 2<sup>nd</sup> and 4<sup>th</sup> Wed of each month, 2-5 Carol Moler  
We are changing up the Knit Pickers= Club. We=re going to knit 2 days a month every second and fourth Wednesday, and we=ll start earlier in the day at 2 and go to 5. The Club is open to all skill levels. We want to share what we've learned, find new patterns, and simply just sit and knit. We may work on some felting projects, fingerless mittens, mittens, and socks.

**Hand Sewing Club** every Tuesday afternoon 2-4  
This club is open to everyone. Bring your hand sewing (embroidery, binding, knitting, crochet, etc) and sit & stitch. During covid, we sit 6 feet apart and wear our masks, but at least we can share our projects, get a little stitching done and just enjoy the companionship.

\*\*\*\*\*

## CLUBS

### **HAND EMBROIDERY CLUB FREE!**

If you want to learn to hand embroider or just brush up your technique, join us on the second Saturday of the month from 10 to noon. You can work on your own projects or you can join the project we are doing.

\*\*\*\*\*

### **Hand Work Club FREE!**

Every Tuesday afternoon from 2-4, join us to just sit & hand stitch, crochet, bind, or knit group. Bring what you're working on, sit up at the table in front by the window and work on your projects for a while. You can get advice & suggestions from your fellow quilters and share your experiences about your projects.

\*\*\*\*\*

### **Knit Pickers' Club FREE!**

This is another get-together class to sit & knit, work on our projects, share information and get some help. We will share techniques, suggest patterns, but mainly we'll sit & knit (or pick). We are discussing trying to do a group project meaning everyone does the same pattern. Each month we will learn a different pattern, make it into a square and eventually put all the squares into one project Afghan, scarf, bag, etc.

\*\*\*\*\*

### **Block of the Month Club FREE!**

First Saturday of the Month, 10:30-11:15. Join at any time. You get a free fat quarter if you come to class with the previous month's completed block.



\*\*\*\*\*

### Toad Toters Club

On full moon days (as noted in the calendar) you will get 20% off all purchases (not otherwise discounted) that you can fit in your bag. You must bring your bag to participate.

Full Moon Days: June 24, July 23, August 27

Discount Policy

We will honor only one discount -- whichever is largest. You can't combine a 10% with a 25% discount to get a 35% discount. On this we can't be bribed.

**Color of the Month:**

**November -- flannels; December -- red**

## Nolting Quilting Machines



## Nolting Longarm Machines

Nolting has 5 main machines, each with different reaches: from 17" to 30" depending on the machine. They are sold with or without a frame, but after I saw & helped set up one of the steel frames this week, I recommend buying the frame. All machines, except for the Standard--the most economical machine-- have a stitch regulator. I recommend a stitch regulator. All machines can be equipped with a computer and there are a couple of different ones to choose from. In addition, you can get an extended table base so that you can use rulers, you can get larger bobbins on some of the models and on the frames you can get hydraulic lifts to raise and lower the tables. In the coming weeks, I will print out more information on each model.

The best entry level machine is the Fun Quilter. It comes in

17", 20" & 23" reach. It comes with the Intellistitch Equalizer stitch regulator, standard speed control, needle up/down, and fixed handles in the front & rear. This machine can also be equipped with a computer.

The Pro Machine has the Intellistitch Turbo stitch regulator, single stitch option, standard speed control, needle up/down and customizable handles in the front & rear. The Pro Machine comes in 20", 24" and 30" reach with 10-12" of inside height. There are easy dials on the front to set stitch length and other options. This machine can also be equipped with a computer.

The NV Machine is the newest in the fleet of Nolting machines. This machine has a touch screen with programmable stitch regulation. You can stitch in 4 different stitch modes plus single stitch and needle up/down. It also has an adjustable brightness LED work light. This machine can also be equipped with a computer.

Nolting also has a commercial machine with the Intellistitch Equalizer stitch regulator, standard speed control, needle up/down, and fixed handles in the front & rear. This machine can also be equipped with a computer.

---

**Normal Shop Hours:  
Monday-Saturday 10-6  
Sunday 1-5**

**Closed first Sunday of month (and some holidays)  
New Hours for Standard Time (starting Nov 7-March 13)**

**Monday-Saturday 10-5, closed Sundays unless a class is scheduled. Then we're open 1-5.  
Check the schedule.**

Join the fun and come feel the difference of quality fabrics.

Happy quilting!

Sincerely, Barbara Boyer

Around the Block

307-433-9555

[www.aroundtheblockquilts.com](http://www.aroundtheblockquilts.com)

