

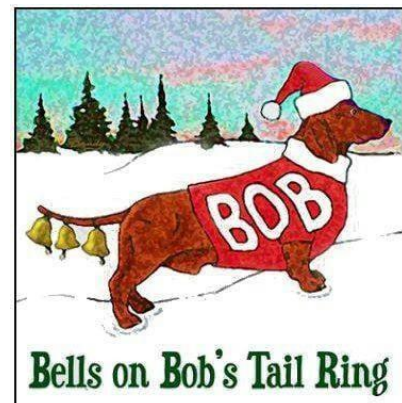


Around the Block QUILT SHOP

December 10, 2021

It's oh so easy to get trapped in YouTube. And it all started with the Twelve Days of Christmas. One of the most horrible songs of the season. We can thank the French. But the English perfected it, so it's their fault, too. It goes back to at least 1780 (or earlier, this is another rabbit hole that can be pursued, but why) but the familiar tune came about in 1909.

So the song is about 12 cumulative gifts given on Christmas. First there are pear trees and partridges. Or juniper trees, or June apple trees. And the gifts came from either a true love or mom. The four calling birds were once colly birds, basically meaning black. But over the years no one knew what colly meant so it morphed into canary, colour'd, curley and Corley birds until finally landing on calling birds. The pipers appear in either the 9th or 11th verse and the 9th & 10th have been switched as well. Three French hens could have been foreign hens. Five gold or golden rings might not be rings at all but the gold bands around a pheasant's neck.



And then we get the Scottish version that covers 13 days and has stalks of corn, hinds a-merry hunting, goldspinks, an Arabian baboon, plovers, a bull that was brown and a goose that was grey. That version didn't go too far. In the Faroe Islands they count geese, sheep, cows, oxen, ponies, goats, and assorted other things including three sides of meat. Sweden counts barley seeds, pounds of pork, flayed sheep (not shorn), pigs, grey foals with golden saddles, oxen, clocks of all things, and twelve churches, priests, altars, coin purses and capes. In northern England, they only counted 10 days of Christmas, for the only stated reason being they only had 10 gifts. Go figure.

The 12 days that are counted relate to the 12 days starting on Christmas Day and ending on Epiphany (January 5) which is the traditional end of Christmas festivities. So that means you don't have to take the tree down on January 1.

The rhyme or verse is designed as a counting or "forfeit" game, probably originally meant for children. Over the years since the 1700s or 1900s it has morphed into a drinking game, where the reciter

is required to drink when he or she misses a verse. Actually I made that up. The penalty was to eat something, give someone a kiss, or incur a “forfeit.” I like my version better.

Now the gifts themselves might have some significance. One thought was the lyrics were intended as a catechism song to teach young English Catholics to learn something about their faith, especially when being Catholic in England might mean you could lose your head. But most people don’t believe that maids a milking and swans a swimming were code for anything Catholic.

You’ve probably also heard about the cost entailed in giving these gifts. Remember that, for some reason—probably because on each new day the song has you repeat all the verses, which is always a good reason to do silly things – each new day you receive not only the new gifts but also all the gifts again on the previous days. Cost of all the goods for all repeats in 2015 dollars is about \$155,500, give or take, for 364 items. If you only get one day’s worth, the cost is much less, only \$34,000. But clearly the cost is dependent on being able to find and hire 10 lords a leaping. Finding 10 lords is hard enough. Convincing them to leap is a whole ‘nother matter.

The music itself has seen various changes since its inception, with various flourishes added, bars repeated and other musical concepts that are best understood only by musicians. And you thought this tune was just a silly annoying repetitious tune.

Which brings me to the rabbit hole of YouTube that I fell through today. One of the groups that has done a parody of this tune is the Navy Sea Chanters. I had to look them up, and when I finally found the correct video, I will admit it was funny. It’s probably the only way to listen to this song. But one YouTube video leads to another. I watched Straight No Chaser do their version (it’s a great version) while dressed in basketball jerseys – not sure why they were outfitted that way, but it had something to do with where they were singing.

And that lead to more Straight No Chaser videos of other Christmas songs, including Carol of the Bells and the Chipmunk song. Which naturally lead to a variety of flash mob performances, from dancing to the music of Grease and Sound of Music (not at the same time), to singing performances of Les Miserable, to silent monks doing the Hallelujah Chorus, to little kids (3-5 year olds) dancing or crying, as the case may be, at their first dance recitals. I was about to head off into Hugh Jackman territory, when I looked up in surprise to see customers in the store. Like I said. A rabbit hole.

You can find lots of parodies without struggling too hard, including the Twelve Drinks of Christmas, the chipmunks actually doing the song, mice singing to the tune with different lyrics, the Muppets’ version, a Maori version called A Pukeko in a Ponga Tree, and even Jimmy Buffet has a version.

But I suggest you stay away from the song completely, unless you want one of those ear worms imbedded into your brain for the next 3 weeks. But reading this post has probably accomplished that all ready. So I suggest at least listening to the Navy Sea Chanter’s version. It was fun and well done. And then hit the rabbit hole on the right side of the screen to watch video after video after video....

Sew Steady Products

I am a dealer in the Sew Steady Products. The Sew Steady tables offer an expanded work area around your machine, flush to the machine arm. Advantages of this table include a large surface that is flush to your machine, giving you plenty of space to lay your blocks flat before stitching.

If your only “prep” surface is the tiny arm that only gives you about 1-2 inches before your fabric hits the needle, the Sew Steady Table is for you! Do I sound like an advertisement? What I can tell you is that when I teach classes and students are sewing long strips together, it is often hard for them to manage those strips when the only flat surface is the 1-2” surface right in front of the needle. The Sew Steady table (and it’s portable!) offers up to 8 inches of a flat surface.

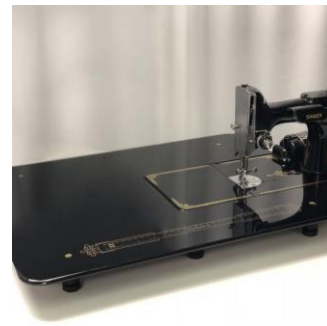
Also, the Sew Steady products can include a “grid glider” which is a slick (it’s both slick and slick, if you get my meaning) surface that you adhere to the table and it helps your fabrics glide smoothly toward the needle. It also provides a “grid” with ¼” lines and a center line (for flying geese constructions) and other measuring lines. So helpful.

In addition, the Sew Steady Products include quilting rulers that can be used for machine quilting. With the large flat table, ruler use becomes easy (with a little practice).

I will eventually put some pictures of the products in the newsletter, but for now take a look at the sewsteady.com for the wide variety of products. And the pics below.

Each table is built according to the specs of your machine, which means the tables are custom ordered. You decide which table (size, extras) you want, you let me know your specs (I will work with you to get the right measurements), I’ll place your order and in app. 3 weeks (it’s custom made remember) you will have your table!

If you’ve never seen a Sew Steady table, come to the shop and see the table I have attached to my Bernina. It’s wonderful!



New Hours for winter. During Standard Time (Nov. 7 thru March 13), I will have new closing hours. M-S 10-5. Sundays will be closed unless I have a class scheduled.

Hours for those Sundays are 1-5. Check the schedule to see if a class is being held.

Also I have added Machine Quilting on your domestic machine on Thursday Nov 18 from 1-4, and Machine Applied Binding on Saturday Dec. 18, 1-4.

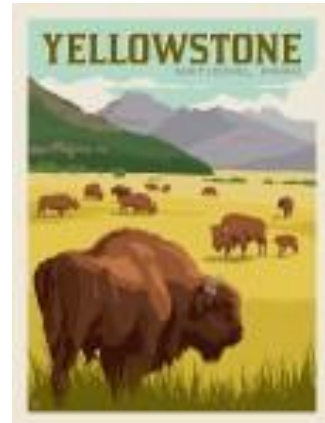
What's New

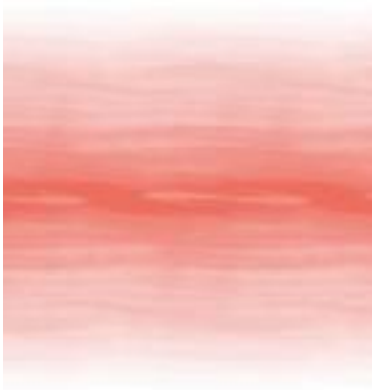


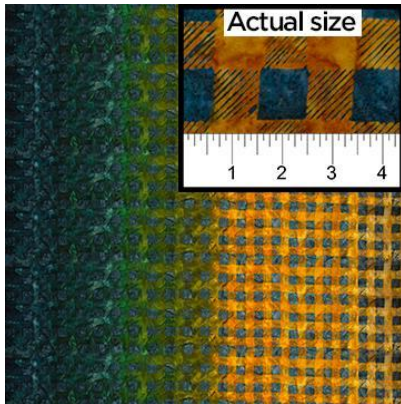
From Hoffman and Maywood



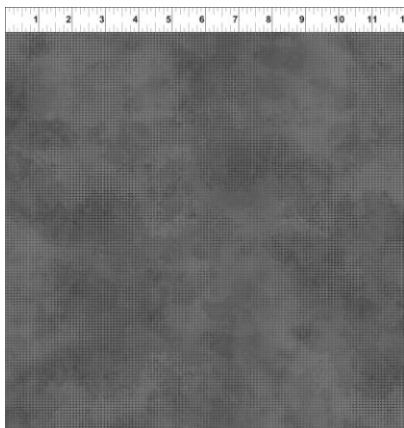
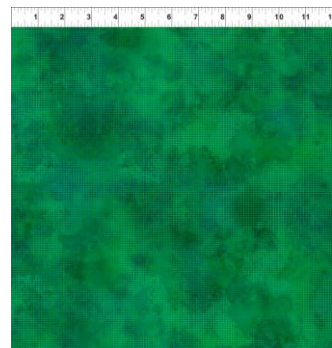
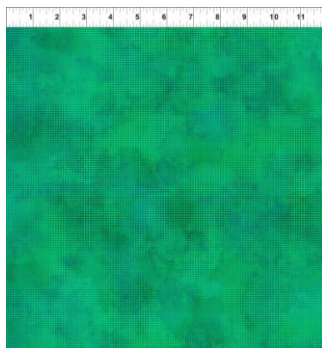
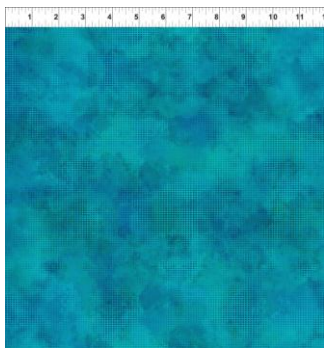
Riley Blake (the 3 juvenile prints are flannel)







Northcott



In the Beginning

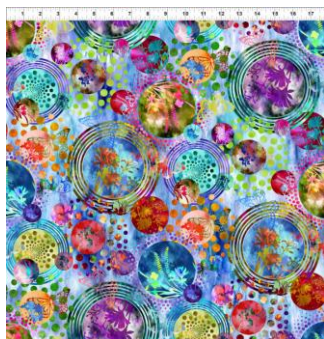
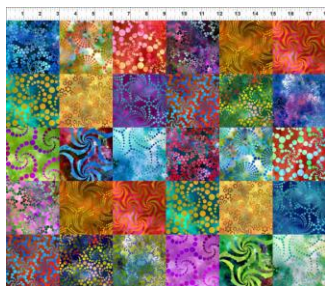


There is more Hoffman fabrics, but the website wouldn't let me download the images for some reason. The fabrics are used in this quilt, and we have kits!

Light as a Feather Quilt Kit

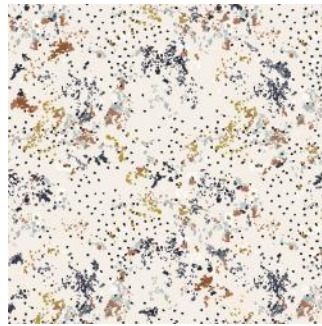


From Hoffman

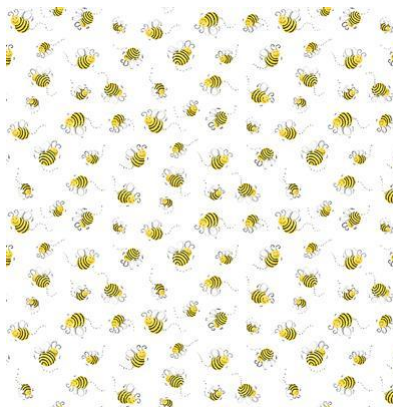


In the Beginning

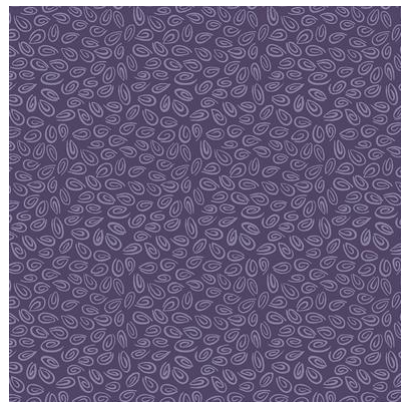


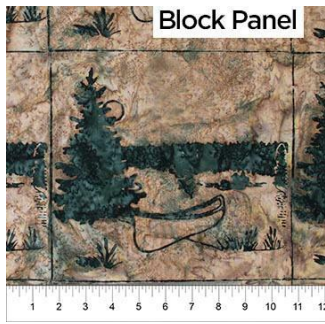
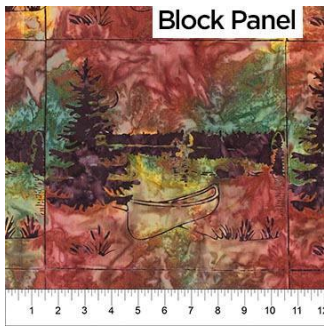


From Cotton+Steele

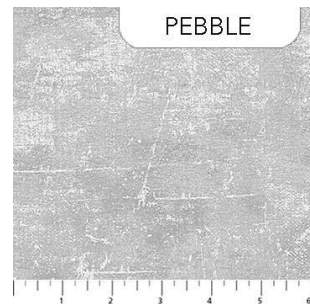
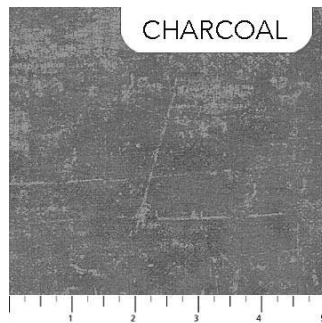
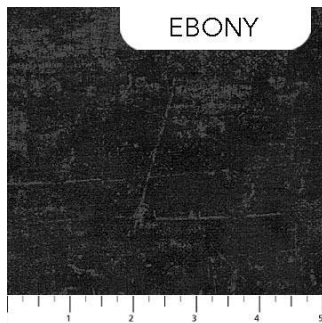
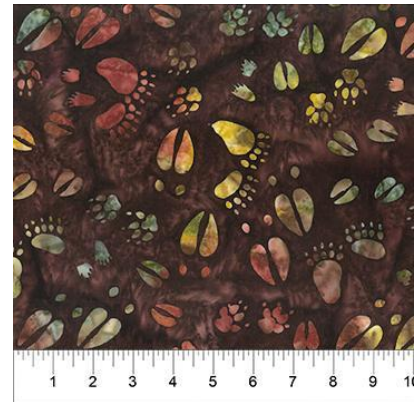
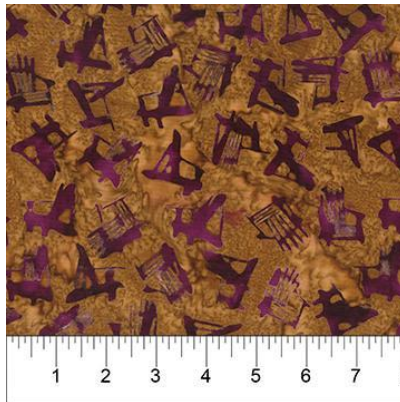


From Clothworks





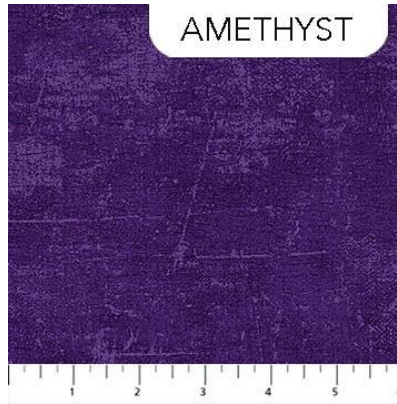
From Banyon Batiks



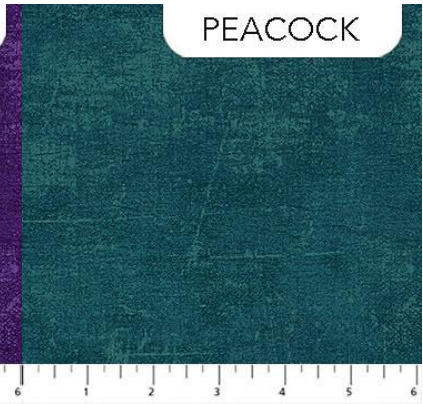
From Northcott



PINE NEEDLE



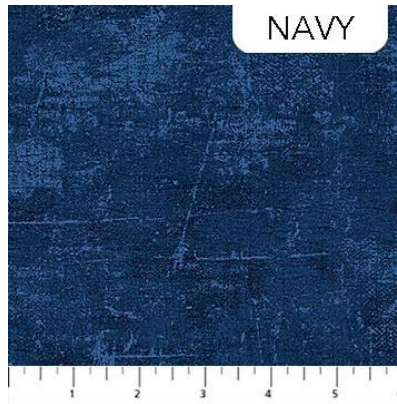
AMETHYST



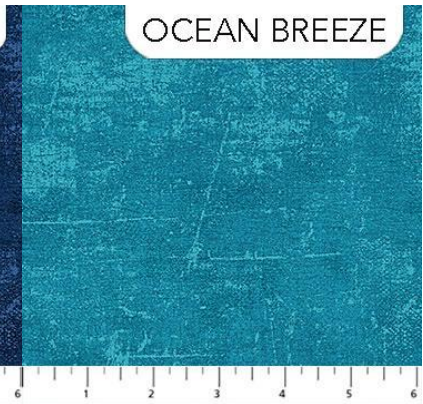
PEACOCK



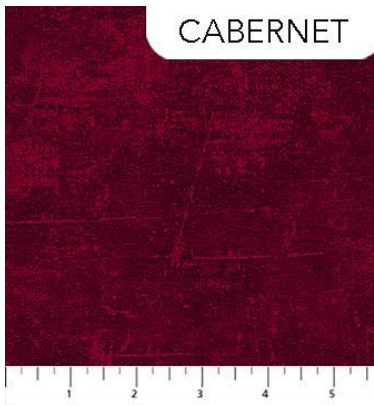
BLUE JEANS



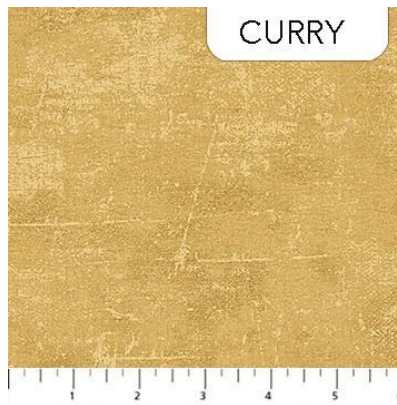
NAVY



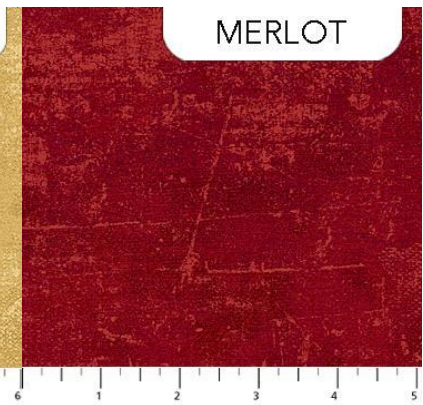
OCEAN BREEZE



CABERNET

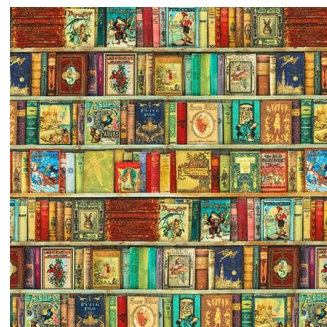


CURRY



MERLOT





RJR





Art Gallery



From Riley Blake:



Continued Store Policies

Masks will be required for entering and shopping in the store, even if you are vaccinated. This policy is subject to change, depending on whether the pandemic gets

under control. We have been allowing vaccinated persons to come into the store without masks this summer, but because of break through covid cases, it is becoming clear that the recent variants are getting stronger than our vaccines. If you do not have a mask with you, and wish to shop I will sell you a mask that you can then just keep in the car. Or if you know what you want you can tell/call me and we can do a "curbside" business like we did last year.

Class policies for the Fall Semester

I welcome anyone who has been vaccinated to attend classes. If you have not been fully vaccinated, for any reason, I ask that you choose not to attend classes this fall. Perhaps by spring, if the pandemic comes under control, I will change this policy. Classes that are small in number, you will be able to choose whether you wear a mask or not. Larger classes, like block of the month, masks will be required. I will be masked regardless of class size.

Note the changes to the December schedule. No technique class on Thursday, moved the Penguin paper pieced class to Dec 16, added the machine binding class on the 18th, and am closed on all Sundays.

If you are interested in the Gift Bag/Penguin paper pieced class, please let me know. If you are coming to the Machine Binding Class. you will need a small, already quilted project plus fabric for binding. The small project can be anything and it's best if it's about 30" X 30", not much bigger or smaller. It can be rectangular; doesn't have to be square. Please don't cut the binding before class. I will demonstrate cutting the binding and sewing it on. Then you will cut your binding and sew it onto your project.

December 2021



Sunday	Monday	Tuesday	Wed	Thur	Fri	Saturday
			1	2	3	4 BOM 10:30 Wool Club 4:30-6
5 CLOSED	6	7 Hand work Club 2-4	8 Knit Pickers' Club 2-4	9	10	11 Embroidery Club 10-noon
12 CLOSED	13	14 Hand work Club 2-4	15	16 Paper Pieced Penguin gift bag 1-5	17	18 Full moon Machine Pieced Binding 1-4
19 CLOSED	20	21 Hand work Club 2-4	22 Knit Pickers' Club 2-	23	24 CLOSED	25 Christmas CLOSED
26 CLOSED	27	28 Hand work Club 2-4	29	30 Toad Toter Sale	31 SALE	CLOSED Color of the month: red
CLOSED						



Ongoing Clubs

Block of the Month First Sat of month 10:30-11:15 FREE Barb Boyer

Join at any time. You get a free fat quarter if you come to class with the previous month's completed block. This year the challenge will be houses and seasons. Each row will have houses, trees and other "neighborhood" objects. Each house will have a place for a pieced block. Each "row" will be a season: Spring, Summer, Fall and Winter. We'll also have a quilt store, school, "village" shops, church, outhouse, dog house, barn – as many as I can squeeze in!

Hand Embroidery Club 2nd Sat. of the month, 10-noon FREE Kathy Sconce

If you want to learn to hand embroider or just brush up your technique, join us on the second Saturday of the month from 10 to noon. You can work on your own projects or you can join the project we are doing. We are doing Crabapple Hill's Snow Days. This is an embroidered and pieced block. So we will help you through the piecing, tracing and embroidery.

Knit Pickers' Club 2nd and 4th Wed of each month, 2-5 Carol Moler (**NOTE: time is 2-5, not 4 as calendar shows**)

We are changing up the Knit Pickers Club. We're going to knit 2 days a month every second and fourth Wednesday, and we'll start earlier in the day at 2 and go to 5. The Club is open to all skill levels. We want to share what we've learned, find new patterns, and simply just sit and knit. We may work on some felting projects, fingerless mittens, mittens, and socks.

Hand Sewing Club every Tuesday afternoon 2-4

This club is open to everyone. Bring your hand sewing (embroidery, binding, knitting, crochet, etc) and sit & stitch. During covid, we sit 6 feet apart and wear our masks, but at least we can share our projects, get a little stitching done and just enjoy the companionship.

ONGOING CLASSES

Techniques Thursdays Sept 9, Oct 14, Dec 9, 2-3 \$10 Barb Boyer

Dec 9: Tips on how to square up any block, including flying geese, by just using basic Creative Grid Rulers. You don't need specialty rulers to square up your blocks! Learn to use what you already own.

Wool Club Sat Oct 2 4:30-6 \$35 Barb Boyer Ongoing, each 1st Sat of the month

Each month we will do a small seasonal, associated to the month, mini wool hanging. We have a collection of 12 different patterns, and if you buy the entire collection you will get a wooden plaque for displaying each mini every month. We will start on November's mini to make sure you get it done before November gets here. So we will stay only one month ahead, giving you incentive to get each mini done. The patterns are not kitted, but we have plenty of wool for sale and we also have some extra bits & pieces for some of the small parts that the shop will contribute to the cause.

NOTE: Pictures of the quilts are in the Fall Newsletter Class description newsletter. I will begin to incorporate them into this newsletter, but I will wait until next week.

November Classes

Pumpkin Patch wall hanging/throw Sat Nov 6 (1-4) & 13 (1-5) \$35 Barb Boyer

This cute quilt is made using the "Buggy Barn" technique, now called the One Sister technique. Fabrics are stacked, slashed, & resewn, mixing the fabric so that each block uses the same fabric but in different positions: Pumpkin, star, background, stem. The challenge in this particular quilt is to group your colors into big and little pumpkins. Which is why we are allowing two sessions for this quilt, just in case.

Trip Around the World Thursday (Veterans' Day) Nov 11 10:30-6 \$35 Barb Boyer

This stripped quilt is made with In The Beginning precut strips. We have 4 kits only. But You can make this quilt with your own fabrics, cut into 2 ½" strips. The class is one day only, but that's all you'll need to understand how to sew the panels and put the quilt together. Finish it up quickly and you'll have a beautiful quilt for a Christmas gift.

Krista Moser's Bespoke Stars Sat Nov 20 \$35 Jean Korber

Krista has done it again, designing a compelling new quilt using the Creative Grids 60 degree triangle ruler. If you have not done one of her quilts, sign up early, because she has quite a following who love the quilts and love the class. This quilt is colorful, with white stars centered in the middle of colorful spokes. It's a wonderful first quilt if you have never used the 60 degree triangle ruler.

Pillow Case Party Sun Nov 21 1-4 FREE

Learn a special way to make a "hot dog" or "burrito" pillowcase. I have some quick cutting techniques that will make the pillowcase easy to stitch. All you need for class is fabric for your pillowcase and your machine.

December Classes

Paper Pieced Penguin gift bag Sat Dec 11 1-5 \$35 Barb Boyer

This is a basic paper pieced penguin that goes on the front of a basic bag pattern. But if you've never done paper piecing this is a perfect way to get started. The book has other patterns that you can choose, so if you don't like penguins, you could substitute Santa. This is the cutest gift bag for the holidays and the greatest part! It's reusable!

Ongoing Classes & Clubs

Block of the Month First Sat of month 10:30-11:15 FREE Barb Boyer

Join at any time. You get a free fat quarter if you come to class with the previous month's completed block. This year the challenge will be houses and seasons. Each row will have houses, trees and other "neighborhood" objects. Each house will have a place for a pieced block. Each "row" will be a season: Spring, Summer, Fall and Winter. We'll also have a quilt store, school, "village" shops, church, outhouse, dog house, barn - as many as I can squeeze in!

Hand Embroidery Club 2nd Sat. of the month, 10-noon FREE Kathy Sconce

Note: January class will be held on the third Saturday

If you want to learn to hand embroider or just brush up your technique, join us on the second Saturday of the month from 10 to noon. You can work on your own projects or you can join the project we are doing. We will be starting Crabapple Hill's Snow Days. This is an embroidered and pieced block. So we will help you through the piecing, tracing and embroidery.

Knit Pickers' Club 2nd and 4th Wed of each month, 2-5 Carol Moler

We are changing up the Knit Pickers' Club. We're going to knit 2 days a month every second and fourth Wednesday, and we'll start earlier in the day at 2 and go to 5. The Club is open to all skill levels. We want to share what we've learned, find new patterns, and simply just sit and knit. We may work on some felting projects, fingerless mittens, mittens, and socks.

Hand Sewing Club every Tuesday afternoon 2-4

This club is open to everyone. Bring your hand sewing (embroidery, binding, knitting, crochet, etc) and sit & stitch. During covid, we sit 6 feet apart and wear our masks, but at least we can share our projects, get a little stitching done and just enjoy the companionship.

CLUBS

HAND EMBROIDERY CLUB FREE!

If you want to learn to hand embroider or just brush up your technique, join us on the second Saturday of the month from 10 to noon. You can work on your own projects or you can join the project we are doing.

Hand Work Club FREE!

Every Tuesday afternoon from 2-4, join us to just sit & hand stitch, crochet, bind, or knit group. Bring what you're working on, sit up at the table in front by the window and work on your projects for a while. You can get advice & suggestions from your fellow quilters and share your experiences about your projects.

Knit Pickers' Club FREE!

This is another get-together class to sit & knit, work on our projects, share information and get some help. We will share techniques, suggest patterns, but mainly we'll sit & knit (or pick). We are discussing trying to do a group project meaning everyone does the same pattern. Each month we will learn a different pattern, make it into a square and eventually put all the squares into one project Afghan, scarf, bag, etc.

Block of the Month Club FREE!

First Saturday of the Month, 10:30-11:15. Join at any time. You get a free fat quarter if you come to class with the previous month's completed block.

Toad Toters Club

On full moon days (as noted in the calendar) you will get 20% off all purchases (not otherwise discounted) that you can fit in your bag. You must bring your bag to participate.

Full Moon Days: June 24, July 23, August 27

Discount Policy

We will honor only one discount -- whichever is largest. You can't combine a 10% with a 25% discount to get a 35% discount. On this we can't be bribed.

Color of the Month:

November -- flannels; December -- red

Nolting Quilting Machines



Nolting Longarm Machines

Nolting has 5 main machines, each with different reaches: from 17" to 30" depending on the machine. They are sold with or without a frame, but after I saw & helped set up one of the steel frames this week, I recommend buying the frame. All machines, except for the Standard--the most economical machine-- have a stitch regulator. I recommend a stitch regulator. All machines can be equipped with a computer and there are a couple of different ones to choose from. In addition, you can get an extended table base so that you can use rulers, you can get larger bobbins on some of the models and on the frames you can get hydraulic lifts to raise and lower the tables. In the coming weeks, I will print out more information on each model.

The best entry level machine is the Fun Quilter. It comes in 17", 20" & 23" reach. It comes with the Intellistitch Equalizer stitch regulator, standard speed control, needle up/down, and fixed handles in the front & rear. This machine can also be equipped with a computer.

The Pro Machine has the Intellistitch Turbo stitch regulator, single stitch option, standard speed control, needle up/down and customizable handles in the front & rear. The Pro Machine comes in 20", 24" and 30" reach with 10-12" of inside height. There are easy dials on the front to set stitch length and other options. This machine can also be equipped with a computer.

The NV Machine is the newest in the fleet of Nolting machines. This machine has a touch screen with programmable stitch regulation. You can stitch in 4 different stitch modes plus single stitch and needle up/down. It also has an adjustable brightness LED work light. This machine can also be equipped with a computer.

Nolting also has a commercial machine with the Intellistitch Equalizer stitch regulator, standard speed control, needle up/down, and fixed handles in the front & rear. This machine can also be equipped with a computer.

Normal Shop Hours:
Monday-Saturday 10-6
Sunday 1-5

Closed first Sunday of month (and some holidays)
New Hours for Standard Time (starting Nov 7-March 13)

Monday-Saturday 10-5, closed Sundays unless a class is scheduled. Then we're open 1-5.
Check the schedule.

Join the fun and come feel the difference of quality fabrics.

Happy quilting!

Sincerely, Barbara Boyer

Around the Block

307-433-9555

www.aroundtheblockquilts.com

