

Sneak Peek of our Row By Row

(not yet stitched yet, just the digital version) :



The theme is Taste the Experience. Our row is called S'More Camping!



May 24, 2019

Becca's getting worried. On Tuesday she came into the house covered with snow and she was not happy.

"I thought you said it was spring," she complained.

"I never said that. You just assumed because I was able to cut the grass in the back yard a couple of weeks ago."

"But what about the tulips and the lilacs and the grape hyacinths? They're getting frozen."

She's right about that. The purple tulips looked a little frost bitten on Thursday and I have no idea if the lilacs will survive. They haven't budded yet, but....

"Well the rule is, around here you don't plant anything until after Memorial Day. I wonder how many people lost their first round of flowers this week because they were impatient," I said.

"I don't understand why people plant anything at all. If it doesn't get frozen, it will get hailed on in June, and then again in July, and then by August it will be too hot, the wind will come up and they'll die from dehydration," Becca said. "You have to start over at least 3 times during the summer."

I was pretty impressed by that. Dehydration is a pretty big word for a mini Aussie. But she's right again about all of that. I no longer buy flowers, or very few, because they either 1) get wiped out by hail or 2) they die of thirst. Granted, I could be better at watering, but in the heat of summer, with wind, you can water in the morning and the flowers (in pots) will be dead by afternoon. I'm pretty good with weeds, though, so my back yard tends to stay semi-green all summer.

Nebraska and Kansas were wonderfully green during my trip. But that kind of green often comes with side effects.

As I drove home, I chose the route north on I-29, which basically runs alongside the Missouri River. You don't see the river for much of the way, but as I got closer to Nebraska City the river became more obvious. Actually, I saw the river long before I saw the river.

The whole area had flooded more than a month ago and I-29 had just opened the week I was there. It almost seemed like the Missouri had carved a new path across the countryside. Water, or shallow lakes, were on either side of the interstate, with water lapping right up to the edge of the shoulder. Then the road that crosses over the river into Nebraska City had been under water until last week. As I drove across, I could tell that the road had had to be built up, in order to split the new "lake" that had formed over the road. This section of the road was easily a mile away from the river, which, after I climbed the hill up to the bridge, I finally got to see. And it was a raging, big flowing river.

Nature was impressive that day. And the area got pelted again this week with rain.

"I don't like being wet," Becca observed. "We're not moving to Nebraska City are we? Every time you take a trip you find a new place you want to live. You'd definitely have to marry the Swiffer guy if we move where it's muddy. Somebody would have to clean up every day."

"We're not moving to Nebraska City," I told her firmly. Although it is a nice little town, green, I could grow tomatoes.....

STONEHENGE CONTEST!

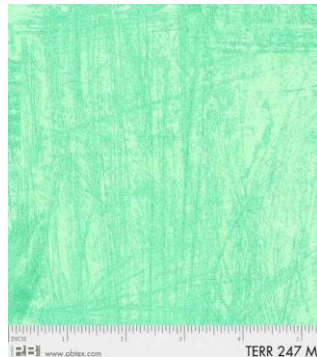
Northcott fabrics is holding a quilt challenge to celebrate 10 years of their fabric line, Stonehenge. This challenge runs from March 1 5-Sept 30.



The block is 12" finished and the kit is \$5. We are currently out of kits and fabric. I'll let you know when more comes in.

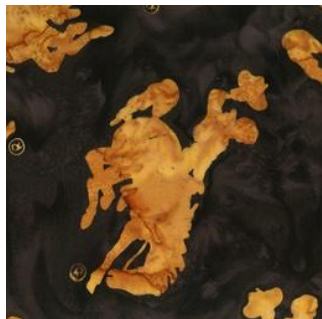
WHAT'S NEW!!

From P&B:





From Hoffman:

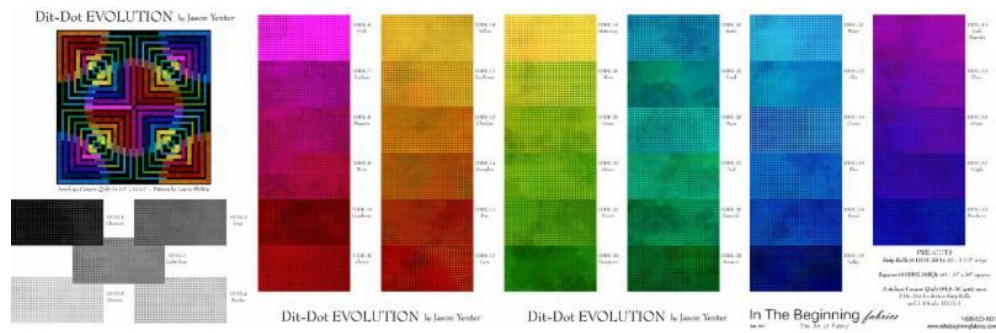




From Rachels of Greenfield:



From In the Beginning:



The whole collection is not here yet, but should show up next week. Half of the colors are here--the half for the Teapot Sampler Quilt.



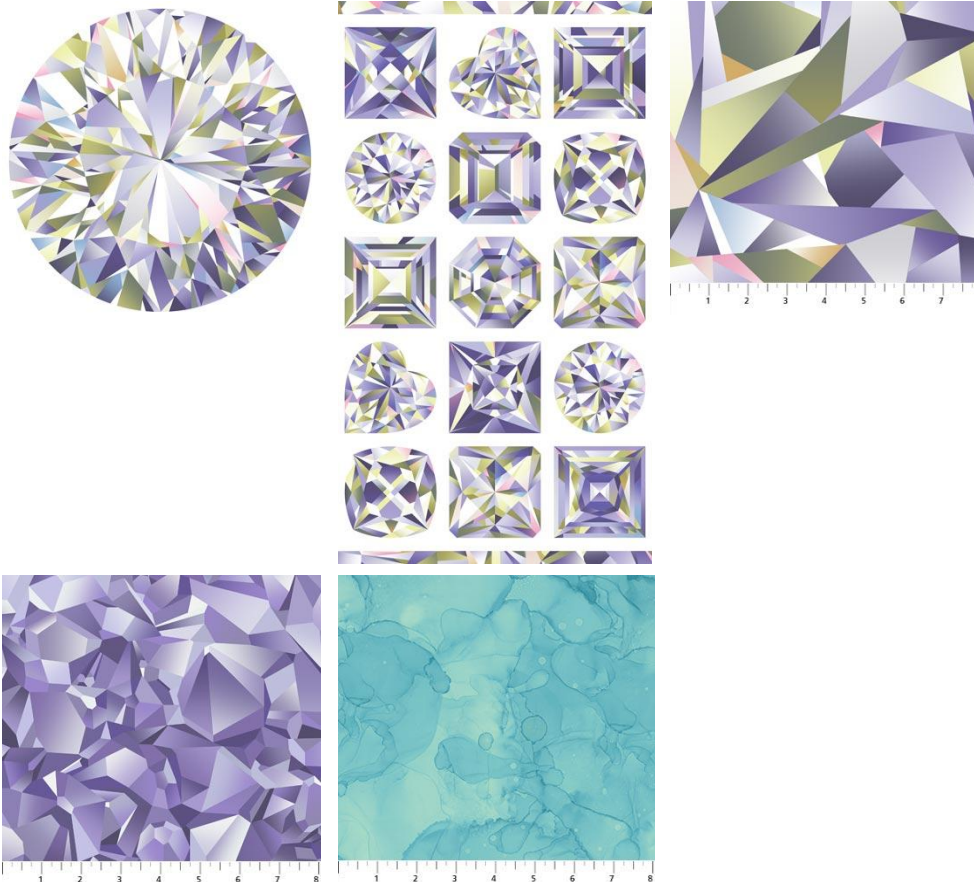
From Windham:



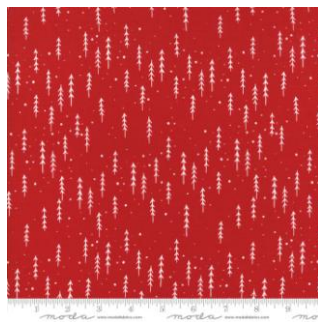
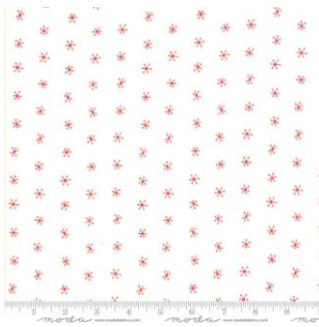


The above 3 bolts of fabric: Originating in South Asia, **Kantha** is a centuries-old form of embroidered quilt making. Traditionally, Kantha was handmade by women and passed down from generation to generation, much like a lovingly pieced quilt. Our unique Kantha is two-ply with simple, hand embroidered running stitches throughout. Embroiderers of this two-layer cotton fabric do not use hoops or frames which gives the fabric a wavy, slightly wrinkled effect. You can use our Kantha fabric for a variety of projects: quilts, bags, table toppers, pillow covers, jackets and even upholstery! Save the scraps to use as patches for jackets and jeans. The possibilities are endless!

From Northcott:



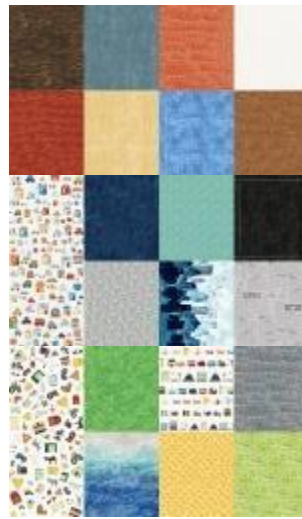
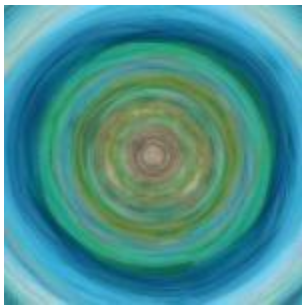
From Moda:



From Henry Glass:



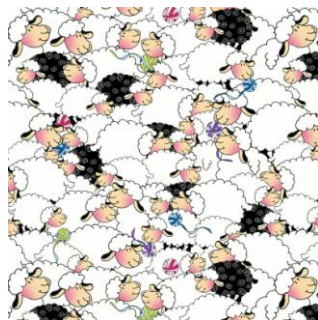
From Hoffman:



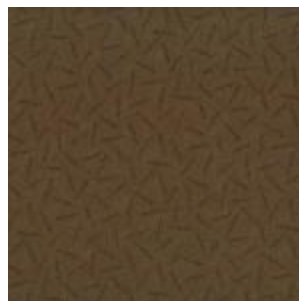
A few things you can do with the Around Town collection (hoffman collection shown above):

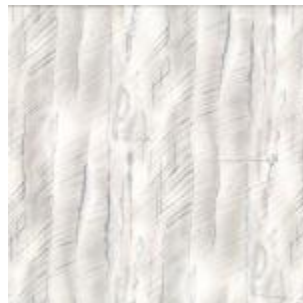
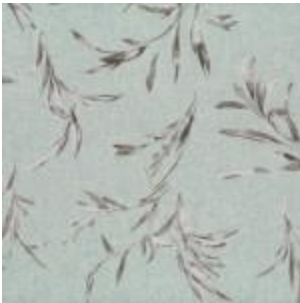
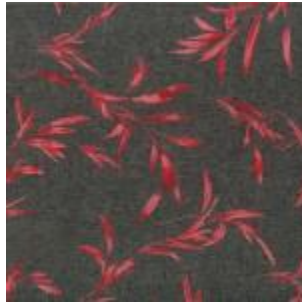
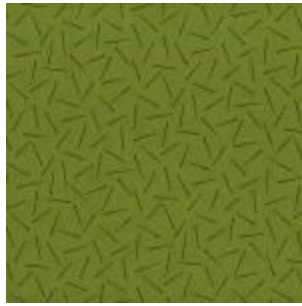


From Henry Glass:



From Lecein:

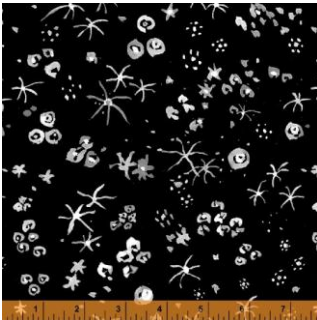
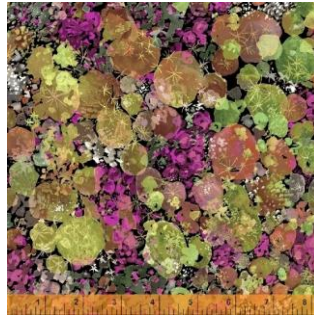




From Windham:



Cork!



SIGN UP FOR LONG ARM QUILTING CLASSES TODAY!

Classes are on Wednesdays and some Saturdays:
10:30-1:30; 2:30-5:30, or 6-8:30. Check the
calendar for dates. Only 4 to a class.

Rentals have started for those who have taken the class. Tuesdays and Fridays, and a couple of Saturday and Sunday rentals. Check the calendar for rentals. Generally, there are 2 rentals times per day: 10:30-2 and 2:30-6. \$25/hr or \$85 for 3 1/2 hours. \$50 minimum. Plus \$5/bobbin for thread. Most quilts (double and smaller), even for beginners, will take about 2 1/2-3 hours. We will discuss what you plan to do on your quilt and will help you estimate how long it will take.

Class descriptions follow the calendar, so keep scrolling. Classes are listed alphabetically.

May 2019						
Sunday	Mon	Tues	Wed	Thurs	Fri	Sat
			1 Long Arm Quilt classes 10:30-1:30; 2:30-5:30; OR 6-9	2 Beginning Machine Applique 1-4	3 Binding 1-4 Long Arm Rental Day	4 BOM 10:30 Long Arm Rental 12-4 Monthly Mini 4-6
5 Closed	6	7 Hand work Club 2-4 Long Arm Rental Day	8 Knit Pickers' Club 3-7	9 Live Each Season Wool Applique Wall hanging Summer 1-4	10 Open sew 3-6 Long Arm Rental Day	11 Embroidery Club 10-noon Potluck II 1-5
12 Mother's Day Closed	13	14 Hand work Club 2-4 Long Arm Rental Day	15	16	17 Long Arm Rental Day	18 Fan Faire 10:30-5 Full Moon
19	20	21 Hand work Club 2-4 Long Arm Rental Day	22 Knit Pickers' Club 3-7	23 Project Day: Needle Case #3 1-5	24 Open sew 3-7 Long Arm Rental Day	25 Mystic Garden Retreat 10:30-6

26 Mystic Garden Retreat 1-5	27 Mystic Garden Retreat 10:30-6 Memorial Day	28 Hand work Club 2-4 Long Arm Rental Day	29	30 Project Day: Needle Case #3 1-5	31 Long Arm Rental Day	Color of the month: whites
------------------------------	--	--	----	------------------------------------	------------------------	----------------------------

June 2019						
Sun	Mon	Tues	Wed	Thurs	Fri	Sat
						1 BOM 10:30 Teapot Sampler 1-4 Monthly Mini 4-6
2 Closed	3	4 Hand work Club 2-4 Long Arm Rental Day	5 Long Arm Quilt classes 10:30-1:30; 2:30-5:30; OR 6-9	6 Live Each Season Wool Applique Wall hanging Summer 1-4	7 Long Arm Rental Day	8 Embroidery Club 10-noon
9 Beginning Quilt 1-4	10 Paper Bag Log Cabin 10:30-5	11 Hand work Club 2-4 Long Arm Rental Day	12 Knit Pickers' Club 3-7	13 Beginning Quilt 1-4	14 Open sew 3-7 Long Arm Rental Day	15 Fan Faire 10:30-5
16 Beginning Quilt 1-4 Father's Day	17 Froggy Quilt 10:30-4	18 Hand work Club 2-4 Long Arm Rental Day	19	20 Beginning Quilt 1-4	21 Long Arm Rental Day	22 Turning 20 10:30-4

23 Beginning Quilt 1-4	24 English Paper Piecing & Hand Piecing 1-4	25 Hand work Club 2- 4 Long Arm Rental Day	26 Knit Pickers' Club 3- 7	27 Beginning Quilt 1-4	28 Open sew 3- 7 Long Arm Rental Day	29 Bear-y Quilt 10:30-4
30 Beginning Quilt 1-4						Color of the month: blue

July 2019						
Sunday	Mon	Tues	Wed	Thurs	Frid	Sat
	1	2 Hand work Club 2-4 Long Arm Rental Day	3 Long Arm Quilt classes 10:30-1:30; 2:30-5:30; OR 6-9	4 Closed Independence Day	5 Long Arm Rental Day	6 BOM 10:30 Teapot Sampler 1- 4 Monthly Mini 4-6
7 Closed	8 Jelly Roll Race 10:30-4	9 Hand work Club 2-4 Long Arm Rental Day	10 Knit Pickers' Club 3- 7	11 Beginning Quilt 1-4	12 Open sew 3-7 Long Arm Rental Day	13 Embroidery Club 10- noon
14 Beginning Quilt 1-4	15	16 Hand work Club 2-4 Long Arm Rental Day	17	18 Beginning Quilt 1-4	19 Long Arm Rental Day	20 Fan Faire 10:30-5

21 Beginning Quilt 1-4	22	23 Hand work Club 2-4 Long Arm Rental Day	24 Knit Pickers' Club 3- 7	25 Beginning Quilt 1-4	26 Open sew 3-7 Long Arm Rental Day	27 Mexican Star 10:30- 4
28 Beginning Quilt 1-4	29 English Paper Piecing & Hand Piecing 1-4	30 Hand work Club 2-4 Long Arm Rental Day	31			Color of the month: Christmas

August 2019						
Sunday	Mon	Tues	Wed	Thurs	Frid	Sat
				1 Beginning Quilt 1-4	2 Long Arm Rental Day	3 BOM 10:30 Teapot Sampler 1-4 Monthly Mini 4-6
4 Closed	5	6 Hand work Club 2-4 Long Arm Rental Day	7 Long Arm Quilt classes 10:30-1:30; 2:30-5:30; OR 6-9	8 Beginning Quilt 1-4	9 Open sew 3-7 Long Arm Rental Day	10 Embroidery Club 10- noon
11 Beginning Quilt 1-4	12	13 Hand work Club 2-4 Long Arm Rental Day	14 Knit Pickers' Club 3- 7	15	16 Long Arm Rental Day	17 Jelly Roll Race 10:30-4

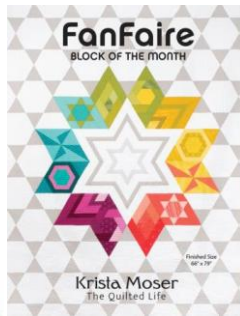
18	19	20 Hand work Club 2-4 Long Arm Rental Day	21	22	23 Open sew 3-7 Long Arm Rental Day	24
25	26 English Paper Piecing & Hand Piecing 1-4	27 Hand work Club 2-4 Long Arm Rental Day	28 Knit Pickers' Club 3- 7	29	30 Long Arm Rental Day	31 Fab 40s sampler 10:30-4
Color of the month: blacks						

Spring & Summer Classes

Block of the Month First Sat of month 10:30-11:15 FREE Barb Boyer
Join at any time. You get a free fat quarter if you come to class with the previous month's completed block. This year we're making a black & Y white + one color quilt. The challenge, if you choose to accept it, is work within the black & white palette (plus one color placed where ever you like). For the color choice, we are drawing paint chip cards, covered in newspaper so you can't see what color you're getting. But...if you don't like the color you've drawn you can 1) swap with a neighbor, or 2) draw a new color. And if you just can't bring yourself to work in neon green and no one will swap with you, you can just choose your own color.

FanFaire Sat May 18, June 15, July 20 10:30-5 Jean Korber \$25

This quilt is a Krista Moser quilt, no template piecing. FanFaire, is a 4-month block of the month. Each block is made twice totaling twelve blocks. Every block teaches you a new way to use the Creative Grids 60 Degree Diamond Ruler, designed by Krista Moser. Cut a combination of diamonds, triangles, hexagons, parallelograms and trapezoids to create this fun quilt, and all with one ruler! This quilt goes together fast and is oh so striking!



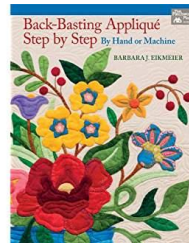
Flower

Paper Piecing last 2-4 Barb Boyer \$20

We will teach the Piecing, the simple & English paper piecing dates back to the early 1800s. It is a hand sewing method that uses paper templates to help sew complex angles together, like hexagons. Any number of different designs can be made, including Grandmother's Flower Garden-this is the pattern we're doing this year. We will also show how to hand piece the traditional way, also, if you are interested.

Grandmother's Garden, English

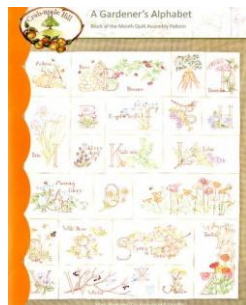
Monday of each month, (one time fee) basics of English Paper easy way to hand piece.



Hand

Applique/Back

Freeburg Feb 13, 10-other dates
template free method
No slippery freezer on top that never under quite right. especially great for pieces will be basted no need for pins to class is great for of appliquers. Don't frustrate you. It's



Basting TBA Sandra

noon \$25 or call for Back basting is a of needle turn applique. paper or chalked lines seem to get turned This method is traveling, because your onto your background -- get in the way. This beginners and all levels let hand applique really easy and relaxing!

Hand Embroidery Club 2nd Sat. of the month, 10-noon FREE

KathySconce

If you want to learn to hand embroider or just brush up your technique, join us on the second Saturday of the month from 10 to noon. You can work on your own projects or you can join the project we are doing. This year we are following a purchased pattern called Gardner's Alphabet Quilt Block of the Month by Crabapple Hill. We will explore a variety of embroidery stitches for each block each block (2 letters per month), plus we will learn how to color with regular crayons to enhance the blocks. Each month Kathy Sconce shows us a new stitch to try, plus, she guides

us through thread choices, how to knot, fabrics to use, and tracing techniques.

Hand Quilting Jan. 16, 10-noon Sandra Freeburg \$25 Watch the calendar or call for other dates

Hand quilting is an art that should not be lost. By the end of Sandra's class you will be hand quilting with confidence. Everyone has at least one special quilt that calls out for hand quilting. And there is nothing better than the feel of a hand quilted quilt. Do yourself a favor and learn this art that connects us to our past -- our mothers, grandmothers and great grandmothers.

Knit Pickers' Club 2nd and 4th Wed of each month, 3-7 Carol Moler

We are changing up the Knit Pickers' Club. We're going to knit 2 days a month every second and fourth Wednesday, and we'll start earlier in the day at 3. For those you who work, we'll still be knitting 'till 7. The Club is open to all skill levels. We want to share what we've learned, find new patterns, and simply just sit and knit. We work on some felting projects, fingerless mittens, mittens, and socks. And we are working on a group project-meaning everyone does the same pattern. Each month we will learn a different pattern, make it into a square and eventually put all the squares into one project-afghan, scarf, bag, etc.

Live Each Season Wool Applique Thurs: Jan 10, Feb 7, Mar 7, April 11, May 9 (& rest of year) 1-4 Barb Boyer \$20

This wool wall hanging has 4 rows: Spring, Summer, Fall & Winter. We will start with the Winter Row in January. We will take 2 months per row, and we'll take July & August off. You will learn wool applique, various embroider stitches, and how to add fun embellishments to your wall hanging.



Long Arm Quilting Classes Wednesdays from 10:30-1:30, 2:30-5:30 or 6-8:30 Barb Boyer \$30 (check calendar for specific times & dates)

In this class you will learn all about the Nolting long arm quilting machines: loading, threading, quilting. I'll demonstrate how to load and thread, set stitch length, change tension, wind and load bobbins. Then I will load a practice quilt onto the machine and show how to do hand guided quilting. Each student will be given at least 15-20 minutes of practice time. (Each class is limited to 4 students). You will be able to do free hand quilting plus you can practice following a pantograph. Any quilter who wants to rent to machines must take this class first, regardless of whether you have experience on a long arm machine. This class is not designed to teach you everything there is to know about long arm quilting-it's just a start.

Monthly Minis First Saturday of the Month, 4-6

This year we are going to do several different wall hangings. These will be kitted with all of the necessary fabrics and patterns. We will work on the same wall hanging for 2-3 months. You can choose to do one or all of them (I think I have 4 scheduled). In class we will learn various machine applique techniques to use on the blocks and some of the kits come with embellishments, so we will discuss how to add the embellishments to the quilts. First quilt:

Change of plans:

first quilt are

hummingbirds.

Second quilt will be

Snowmen! (we will

do the snowmen in

April)

