

# Row By Row 2019 S'More Camping



July 12, 2019

Becca wanted me to remind you that the State Quilt Guild is meeting today and tomorrow. She wanted me to tell you that you need to go to the quilt show and vendor mall out at LCCC.

She can't go because she hasn't figured out how to drive. Otherwise she would be there, in a nice air conditioned building instead of a hot front yard.

So please come to the show. That will make Becca happy and I have to live with her, remember. An irritated Becca is not something you want to see.

There are 10 vendors (I think--I walked around but didn't really count). Very nice displays. The quilt show hangs in the middle of the room with the vendors on either side. And it's free!

We set up yesterday and the show opened last night. So needless to say, we've been busy. Today the show is from 8-6 and tomorrow from 8-4, at the Clay Pathfinder building. You can't miss it, if you know which building to look for: the tallest one on campus, right in the middle of campus on the northwest side.

The shop is also open regular hours.

Have yourself a marvelous quilting weekend!

# STONEHENGE CONTEST!

Northcott fabrics is holding a quilt challenge to celebrate 10 years of their fabric line, Stonehenge. This challenge runs from March 15-Sept 30.

The block is 12" finished and the kit is \$5. We are currently out of kits and fabric. I'll let you know when more comes in.



## Quilt Wyoming 2019 July 11-14

Save the Date! Save the Date! Save the Date!

Wyoming State Quilt Guild presents  
**Quilt Wyoming 2019**

Laramie County Community College Campus (LCCC)

Cheyenne, Wyoming

July 11-14, 2019

Featured Teachers:

Kimberly Einmo

Kris Vierra

Also Classes, Quilt Show, Vendors, Trunk Shows



Contact: Daenette More ~ daenette@gmail.com

[wsqg.org](http://wsqg.org)

Save the Date! Save the Date! Save the Date!

Quilt Wyoming comes to Cheyenne this year. Each year the State Quilt Guild puts on a vendor show, quilt show, and quilt classes, with local and visiting teachers. The event travels to different venues every year, to make sure it is held in all parts of the state. This year, it's Cheyenne!

Registration will be in the Clay Pathfinder building on the North side of Laramie County Community College. Find a

map of the campus online at this link:  
[lccc.wy.edu/about/maps/index.aspx](http://lccc.wy.edu/about/maps/index.aspx)

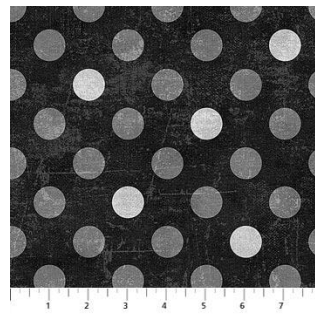
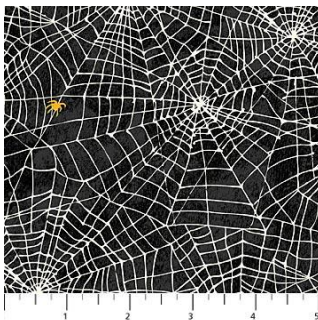
The brochure with the schedule for classes and events can  
be found at: <http://wsqg.org/wp-content/uploads/2019/06/QW19Brochb.pdf>

or go to Wyoming State Quilt Guild ([wsqg.org](http://wsqg.org))

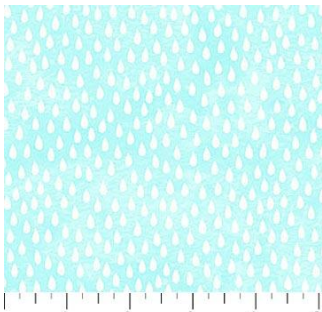
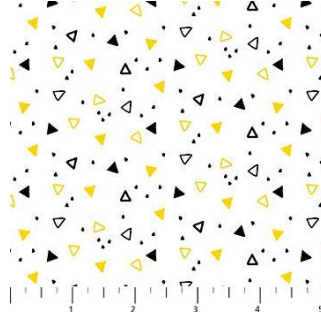
The vendor show and quilt show opens July 11 (Thursday) at  
7:30 p.m., Clay Pathfinder Building.

## WHAT'S NEW!!

From Northcott:







From P & B:



From River Bend:



We have kits for this quilt, plus some other precuts and a bolt of purple dots. It's hard to grab the pics from Midwest (River Bend) site.

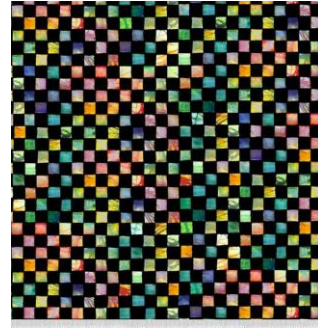
From P & B:



AWAK 3039 MU

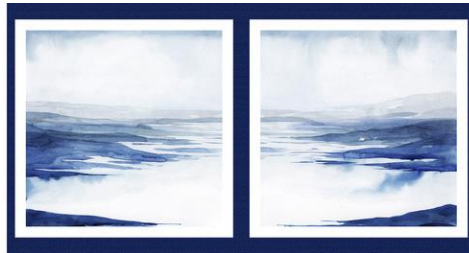
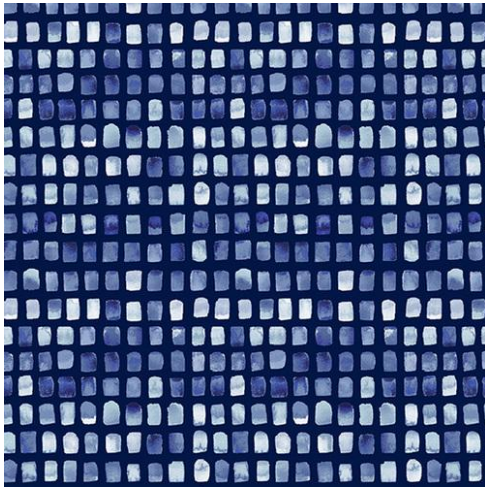


AWAK 3040 MU



LIVW 3086 MU

From Studio E:

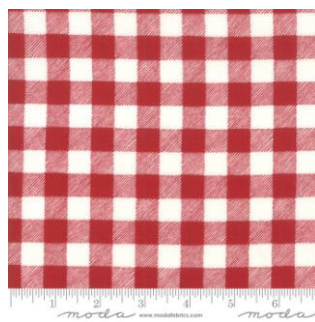


From In the Beginning:





From Moda:



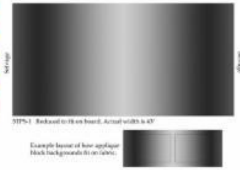
NOTE: The red & black check probably 't be won't be around long, so plan your Christmas projects soon.

We also got in 10" squares and 2 1/2" strips in this collection.

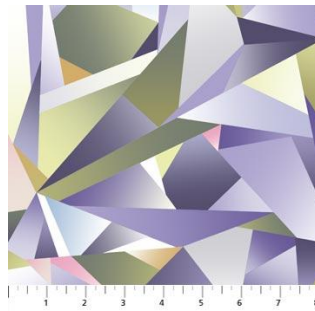
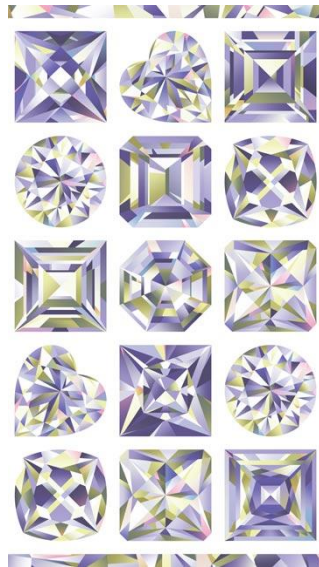
From P&B:



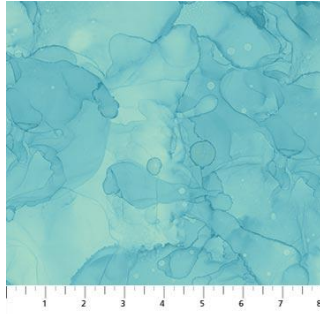
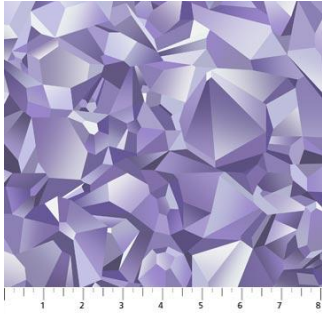
From Hoffman:



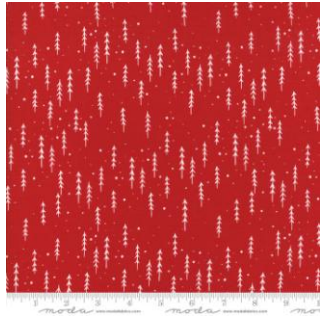
From Northcott:







From Moda:



From Henry Glass:



**SIGN UP FOR LONG ARM**



# QUILTING CLASSES TODAY!

Classes are on Wednesdays and some Saturdays: 10:30-1:30; 2:30-5:30, or 6-8:30. Check the calendar for dates. Only 4 to a class.

Rentals have started for those who have taken the class. Tuesdays and Fridays, and a couple of Saturday and Sunday rentals. Check the calendar for rentals. Generally, there are 2 rentals times per day: 10:30-2 and 2:30-6. \$25/hr or \$85 for 3 1/2 hours. \$50 minimum. Plus \$5/bobbin for thread. Most quilts (double and smaller), even for beginners, will take about 2 1/2-3 hours. We will discuss what you plan to do on your quilt and will help you estimate how long it will take.

**Class descriptions follow the calendar, so keep scrolling. Classes are listed alphabetically, by month.**

**NOTE TO Embroiders: Quilt Wyoming is scheduled for July 13. I am at the vendor show & Kathy is in a class. You can come to class & sit & stitch, but neither of us will be at the shop.**

July 2019						
Sunday	Mon	Tues	Wed	Thurs	Frid	Sat
	<b>1</b>	<b>2</b> Hand work Club 2-4 Long Arm Rental Day	<b>3</b> Long Arm Quilt classes 10:30-1:30; 2:30-5:30	<b>4</b> Closed <a href="#">Independence Day</a>	<b>5</b> Long Arm Rental Day	<b>6</b> BOM 10:30 Teapot Sampler 1-4 Monthly Mini 4-6
<b>7</b> Closed Beginning Quilting 1-4	<b>8</b> Jelly Roll Race 10:30-4	<b>9</b> Hand work Club 2-4 Long Arm Rental Day	<b>10</b> Knit Pickers' Club 3-7	<b>11</b> Quilt Wyoming	<b>12</b> Long Arm Rental Day  Quilt Wyoming	<b>13</b> Fan Faire 11:30-6  Quilt Wyoming

<b>14</b> Beginning Quilt 1-4	<b>15</b>	<b>16</b> Hand work Club 2-4 Long Arm Rental Day Full Moon	<b>17</b>	<b>18</b> Beginning Quilt 1-4	<b>19</b> Long Arm Rental Day	<b>20</b>
<b>21</b> Beginning Quilt 1-4	<b>22</b>	<b>23</b> Hand work Club 2-4 Long Arm Rental Day	<b>24</b> Knit Pickers' Club 3- 7	<b>25</b>	<b>26</b> Open sew 3-7 Long Arm Rental Day	<b>27</b> Mexican Star 10:30-4
<b>28</b> Beginning Quilt 1-4	<b>29</b> English Paper Piecing & Hand Piecing 1-4	<b>30</b> Hand work Club 2-4 Long Arm Rental Day	<b>31</b>			Color of the month: Christmas

## August 2019

Sunday	Mon	Tues	Wed	Thurs	Frid	Sat
				<b>1</b> Beginning Quilt 1-4	<b>2</b> Long Arm Rental Day	<b>3</b> BOM 10:30 Teapot Sampler 1-4 Monthly Mini 4-6
<b>4</b> Closed	<b>5</b>	<b>6</b> Hand work Club 2-4 Long Arm Rental Day	<b>7</b> Long Arm Quilt classes 10:30-1:30; 2:30-5:30	<b>8</b> Beginning Quilt 1-4	<b>9</b> Open sew 3-7 Long Arm Rental Day	<b>10</b> Embroidery Club 10- noon
<b>11</b> Beginning Quilt 1-4	<b>12</b>	<b>13</b> Hand work Club 2-4 Long Arm Rental Day	<b>14</b> Knit Pickers' Club 3- 7	<b>15</b> Full Moon	<b>16</b> Long Arm Rental Day	<b>17</b> Jelly Roll Race 10:30-4



18	19	20 Hand work Club 2-4 Long Arm Rental Day	21	22	23 Open sew 3-7 Long Arm Rental Day	24
25	26 English Paper Piecing & Hand Piecing 1- 4	27 Hand work Club 2-4 Long Arm Rental Day	28 Knit Pickers' Club 3- 7	29	30 Long Arm Rental Day	31 Fab 40s sampler 10:30-4
Color of the month: blacks						

### Summer Classes

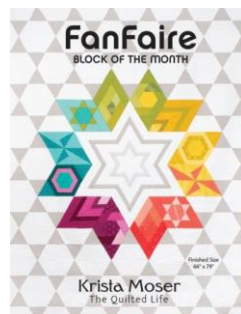
Please look on the calendars above for times and dates. We will add a couple more classes, time & energy permitted, so keep an eye on the calendar.

### Ongoing Classes & Clubs

**Block of the Month** First Sat of month 10:30-11:15 FREE Barb Boyer  
Join at any time. You get a free fat quarter if you come to class with the previous month's completed block. This year we're making a black & white + one color quilt. The challenge, if you choose to accept it, is work within the black & white palette (plus one color placed where ever you like). For the color choice, we are drawing paint chip cards, covered in newspaper so you can't see what color you're getting. But...if you don't like the color you've drawn you can 1) swap with a neighbor, or 2) draw a new color. And if you just can't bring yourself to work in neon green and no one will swap with you, you can just choose your own color.

**FanFaire** Sat May 18, June 15, July 13 11:30-6 Jean Korber \$25

This quilt is a Krista Moser quilt, no template piecing. FanFaire, is a 4-month block of the month. Each block is made twice totaling twelve blocks. Every block teaches you a new way to use the Creative Grids 60 Degree Diamond Ruler, designed by Krista Moser. Cut a combination of diamonds, triangles, hexagons, parallelograms and trapezoids to create this fun quilt, and all with one ruler! This quilt goes together fast and is oh so striking!



### **Grandmother's Flower Garden, English**

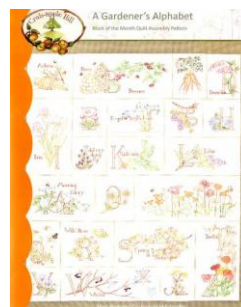
**Paper Piecing** last Monday of each month, 2-4 Barb Boyer \$20 (one time fee)

We will teach the basics of English Paper Piecing, the simple & easy way to hand piece. English paper piecing dates back to the early 1800s. It is a hand sewing method that uses paper templates to help sew complex angles together, like hexagons. Any number of different designs can be made, including Grandmother's Flower Garden-this is the pattern we're doing this year. We will also show how to hand piece the traditional way, also, if you are interested.



**Hand Embroidery Club** 2nd Sat. of the month, 10-noon FREE Kathy Sconce

If you want to learn to hand embroider or just brush up your technique, join us on the second Saturday of the month from 10 to noon. You can work on your own projects or you can join the project we are doing. This year we are following a purchased pattern called Gardner's Alphabet Quilt Block of the Month by Crabapple Hill. We will explore a variety of embroidery stitches for each block each block (2 letters per month), plus we will learn how to color with regular crayons to enhance the blocks. Each month Kathy Sconce shows us a new stitch to try, plus, she guides us through thread choices, how to knot, fabrics to use, and tracing techniques.



**Knit Pickers' Club** 2nd and 4th Wed of each month, 3-7 Carol Moler

We are changing up the Knit Pickers' Club. We're going to knit 2 days a month every second and fourth Wednesday, and we'll start earlier in the day at 3. For those you who work, we'll still be knitting 'till 7. The Club is open to all skill levels. We want to share what we've learned, find



new patterns, and simply just sit and knit. We work on some felting projects, fingerless mittens, mittens, and socks. And we are working on a group project-meaning everyone does the same pattern. Each month we will learn a different pattern, make it into a square and eventually put all the squares into one project-afghan, scarf, bag, etc.

**Live Each Season Wool Applique** Thurs: Jan 10, Feb 7, Mar 7, April 11, May 9 (& rest of year) 1-4 Barb Boyer \$20

This wool wall hanging has 4 rows: Spring, Summer, Fall & Winter. We will start with the Winter Row in January. We will take 2 months per row, and we'll take July & August off. You will learn wool applique, various embroider stitches, and how to add fun embellishments to your wall hanging. **Note: we are taking July & August off. We'll start on the pumpkin row in September.**



**Long Arm Quilting Classes** Wednesdays from 10:30-1:30, 2:30-5:30 Barb Boyer \$30 (check calendar for specific times & dates)

In this class you will learn all about the Nolting long arm quilting machines: loading, threading, quilting. I'll demonstrate how to load and thread, set stitch length, change tension, wind and load bobbins. Then I will load a practice quilt onto the machine and show how to do hand guided quilting. Each student will be given at least 15-20 minutes of practice time. (Each class is limited to 4 students). You will be able to do free hand quilting plus you can practice following a pantograph. Any quilter who wants to rent to machines must take this class first, regardless of whether you have experience on a long arm machine. This class is not designed to teach you everything there is to know about long arm quilting-it's just a start.

### **Mystic Garden**

For those of you who missed the retreat, we will schedule a couple of extra classes to help get you going on your quilt. And for those that did attend the retreat, we will work on the blocks that we didn't have time for. Watch the newsletter for dates & times.

**Teapot Sampler (class is free with purchase of kit -- \$175) 3-4 months** Barb Boyer

Jason Yenter & In The Beginning Fabrics have done it again!

This beautiful quilt combines fusible applique with easy to do piece blocks. We will do the quilt as a block of the month, doing 2 blocks a month (there are 9). Skills learned include fusible applique, machine applique with mono filament thread, mitered borders and basic pieced blocks. We have kits!



### **July Classes**

**Jelly Roll Race \$20 Sue Frerich**

On your mark, get set, SEW! Okay, you don't have to race, but this is another class where you can get the inside of the quilt finished in a day. (Some people can do it

in an hour. I looked it up.) All you need is 42 2½" strips. We have Jelly Rolls, Tonga Treats and Bali Pops if you don't want to cut your own strips. If you do want to cut your own strips, you can use the AccuCutter and your scraps. Skills learned include how to sew straight (again, I'm not joking), piecing on the diagonal (without drawing your lines) and being brave to let the colors fall where they may. This is another quilt that is perfect for that project that needs to be done yesterday,

**Mexican Star \$25 Sue Frerich**

Eleanor Burns has done it again with this striking criss crossing quilt. The sample quilt shown has a black background, but the pattern shows a white background, so you definitely have options. This quilt uses a special wedge ruler to help you get the perfect angle on your strips. This is another quilt where you can use precut 2 ½" strips. Skills learned include handling angles, using a new ruler, and color placement for your stars.



**August Classes**

**Jelly Roll Race \$20 Barb Boyer**

See explanation in July. Same quilt, different day.

**Fab Forties Quilt \$25 Sue Frerich**

Our final Log Cabin quilt of the year involves both log cabin blocks and 12-14 other pieced blocks. Eleanor has been taking her old quilts, with classic blocks, and turning them into fabulous! patterns. This quilt will be taught as a (several) block of the month-it will continue into the fall schedule. Skills learned include how to use lots of new rulers (Eleanor has a ruler for many of her blocks which make the cutting and piecing easy peasy); how to make lots of new blocks; and how to choose the right color palate.



\*\*\*\*\*

**CLUBS**

**HAND EMBROIDERY CLUBFREE!**

If you want to learn to hand embroider or just brush up your technique, join us on the second Saturday of the month from 10 to noon. You can work on your own projects or you can join the project we are doing.

\*\*\*\*\*

**Hand Work ClubFREE!**

Every Tuesday afternoon from 2-4, join us to just sit & hand stitch, crochet, bind, or knit group. Bring what you're working on, sit up at the table in front by the window and work on your projects for awhile. You can get advice & suggestions from your fellow quilters and share your experiences about your projects.

\*\*\*\*\*



**Knit Pickers' Club FREE!**

This is another get-together class to sit & knit, work on our projects, share information and get some help. We will share techniques, suggest patterns, but mainly we'll sit & knit (or pick). We are discussing trying to do a group project meaning everyone does the same pattern. Each month we will learn a different pattern, make it into a square and eventually put all the squares into one project Afghan, scarf, bag, etc.

\*\*\*\*\*

**Block of the Month Club FREE!**

First Saturday of the Month, 10:30-11:15. Join at any time. You get a free fat quarter if you come to class with the previous month's completed block.

\*\*\*\*\*

**Monthly Mini Club FREE!**

First Saturday of the Month from 4-6.

This year we are going to do several different wall hangings. These will be kitted with all of the necessary fabrics and patterns. We will work on the same wall hanging for 2-3 months. You can choose to do one or all of them (I think I have 4 scheduled). In class we will learn various machine applique techniques to use on the blocks and some of the kits come with embellishments, so we will discuss how to add the embellishments to the quilts.

\*\*\*\*\*

**Toad Toters Club**

On full moon days (as noted in the calendar) you will get 20% off all purchases (not otherwise discounted) that you can fit in your bag. You must bring your bag to participate.

Full Moon Days: June 17; July 16; August 15

**Discount Policy**

We will honor only one discount -- whichever is largest. You can't combine a 10% with a 25% discount to get a 35% discount. On this we can't be bribed.

**Color of the Month**

June blue; July Christmas; August blacks.

## Nolting Longarm Machines

Nolting has 5 main machines, each with different reaches: from 17" to 30" depending on the machine. They are sold with or without a frame, but after I saw & helped set up one of the steel frames this week, I recommend buying the frame. All machines, except for the Standard--

the most economical machine-- have a stitch regulator. I recommend a stitch regulator. All machines can be equipped with a computer and there are a couple of different ones to choose from. In addition, you can get an extended table base so that you can use rulers, you can get larger bobbins on some of the models and on the frames you can get hydraulic lifts to raise and lower the tables. In the coming weeks, I will print out more information on each model.

The best entry level machine is the Fun Quilter. It comes in 17", 20" & 23" reach. It comes with the Intellistitch Equalizer stitch regulator, standard speed control, needle up/down, and fixed handles in the front & rear. This machine can also be equipped with a computer.



The Pro Machine has the Intellistitch Turbo stitch regulator, single stitch option, standard speed control, needle up/down and customizable handles in the front & rear. The Pro Machine comes in 20", 24" and 30" reach with 10-12" of inside height. There are easy dials on the front to set stitch length and other options. This machine can also be equipped with a computer.



The NV Machine is the newest in the fleet of Nolting machines. This machine has a touch screen with programmable stitch regulation. You can stitch in 4 different stitch modes plus single stitch and needle up/down. It also has an adjustable brightness LED work light. This machine can also be equipped with a computer.



Nolting also has a commercial machine with the Intellistitch Equalizer stitch regulator, standard speed control, needle up/down, and fixed handles in the front & rear. This machine can also be equipped with a computer.

## CLUBS

### **HAND EMBROIDERY CLUB-FREE!**

If you want to learn to hand embroider or just brush up your technique, join us on the second Saturday of the month from 10 to noon. You can work on your own projects or you can join the project we are doing.

\*\*\*\*\*

### **Hand Work Club-FREE!**

Every Tuesday afternoon from 2-4, join us to just sit & hand stitch, crochet, bind, or knit group. Bring what you're working on, sit up at the table in front by the window and work on your projects for awhile. You can get advice & suggestions from your fellow quilters and share your experiences about your projects.

\*\*\*\*\*

### **Knit Pickers' Club FREE!**

This is another get-together class to sit & knit, work on our projects, share information and get some help. We will share techniques, suggest patterns, but mainly we'll sit & knit (or pick). We are discussing trying to do a group project-meaning everyone does the same pattern. Each month we will learn a different pattern, make it into a square and eventually put all the squares into one project-afghan, scarf, bag, etc. 2nd & 4th Wednesdays, 3-7.

\*\*\*\*\*

### **Block of the Month Club FREE!**

First Saturday of the Month, 10:30-11:15. Join at any time. You get a free fat quarter if you come to class with the previous month's completed block.

\*\*\*\*\*

### **Monthly Mini Club FREE!**

First Saturday of the Month from 4-6.

This year we are going to do several different wall hangings. These will be kitted with all of the necessary fabrics and patterns. We will work on the same wall hanging for 2-3 months. You can choose to do one or all of them (I think I have 4 scheduled). In class we will learn various machine applique techniques to use on the blocks and some of the kits come with embellishments, so we will discuss how to add the embellishments to the quilts.

\*\*\*\*\*

### **Toad Toters Club**

On full moon days (as noted in the calendar) you will get 20% off all purchases (not otherwise discounted) that you can fit in your bag. You must bring your bag to participate.

Full Moon Days: January 20 , February 19 , March 20, April 19, May 18.

#### Discount Policy

We will honor only one discount -- whichever is largest. You can't combine a 10% with a 25% discount to get a 35% discount. On this we can't be bribed.

#### Color of the Month

January red; February purple; March green; April yellow; May white.



Join the fun and come feel the difference of quality fabrics.

Happy quilting!

Sincerely, Barbara Boyer

Around the Block

307-433-9555

[www.aroundtheblockquilts.com](http://www.aroundtheblockquilts.com)