



April 12, 2019

Why do we deceive ourselves every year that spring has arrived, when it hasn't. I drove by Riverbend Nursery on Saturday and they had their baby trees on the lot. It was in the 60s and a beautiful day. And I knew I was being misled. On Wednesday I drove to the bank in a blizzard white out and a minute later drove back to the shop in clear weather. But that didn't last, either.

At this time of year, I am always reminded of my favorite quote from Hemingway in *A Moveable Feast*: "You expected to be sad in the fall. Part of you died each year when the leaves fell from the trees and their branches were bare against the wind and the cold, wintery light. But you knew there would always be the spring, as you knew the river would flow again after it was frozen. When the cold rains kept on and killed the spring, it was as though a young person died for no reason."

Or, on a more happier note (pun intended): lyrics from *Seven Brides for Seven Brothers*:

"In November, the snow starts to fly,  
Piling up, ankle-high.

Come December, it's up to your knee,  
Still a bride's a bride-to-be.

January, higher still,  
To the parlor window sill.

February finds a drift  
And the storm that seems never to lift.

March comes in like a lion, what else?  
Still the snow never melts.

April showers will come, so they say.  
But they don't, and it's May.

You're about to forget the whole thing,  
All at once, one day, it's Spring."

Just keep telling yourself: soon, soon, soon..... And just be glad it happened this week  
and not next week: Shop Hop.

In other news: This is a robo email if I ever saw one:

The local Subaru dealer, from whom I didn't buy my 2005 Subaru, wants me to trade in my 2005 Subaru Outback for a newer model. That's not unusual. But their pitch is: "Our sales associate ... has created this personalized trade up offer for your 2005 Subaru Outback Limited. This offer is based on average payment information for customers in our area with the same vehicle and your projected mileage." And he says, "Your Subaru holds its value for the long haul-that's why you are eligible to trade up to a new Subaru that could have lower or similar monthly payments." He doesn't list what he thinks my current payment is. Instead he just estimates my new loan payment for a 2019 Subaru Outback Limited: \$541.

Now, how many of you would believe that payments on a 2005 car would be lower than a brand new 2019 car? Talk about a stock email where a computer has plugged in the numbers 2005 and 2019 and \$541. And I checked on that monthly price quote: That's the loan price for a new Subaru - not a new Subaru with a trade in of my old Subaru which "holds its value for the long haul."

So I say this to you, Subaru: I love your cars; I love your ads. But I am extremely disappointed in this plug in the blanks email. You are better than this. Besides, my 2005 actually blew up last summer and I am driving a used 2018 Subaru, with payments a lot less than \$541. So you didn't even bother fact checking your email spam.

And I forgot to tell you last week what the April Fools story was: The one about the planes being sold to a rich millionaire in Jackson. All the other stories, including playing hip hop music for cheese, were real.

**Springtime in the Rockies Shop  
Hop!  
April 19-20  
The Ranch, First National Bank**

## **Building, Loveland, CO**

**Our theme for this year's quilt show is**

**Camping! Roasting marshmallows, boating on the lake, catching fish, pitching a tent, sleeping under the stars. Design your own project or use a commercial pattern. Wall hangings, totes or other interpretations of a camping theme no larger than 60" X 60" will be accepted and must be turned in by April 8. Projects will hang at the Springtime in the Rockies Shop Hop at the Ranch, April 19 & 20. Gift Basket Prizes awarded: \$75 1<sup>st</sup>; \$50 2<sup>nd</sup>; \$25 3<sup>rd</sup>.**

**A few rules: Projects must be made by entrant and made within the last 12 months.**

### **2019 Shop Hop Demonstrations List**

**Friday - April 19**

**10:00 Lickety Stitch Our Top Ten Favorite Notions**

**11:00 Juke Box Quilting Mastering Accuracy**

**12:00 Fig Leaf Versatile Nine-Patch**

**1:00 Maggie's Sewing Color - Make It Work For You!**

**2:00 Quilter's Stash Teeny Tiny Collage**

**3:00 Quilter's Dream New Twister Ruler**

**4:00 Sewing Circle Quick & Easy Projects Using Quilting Techniques**

**Saturday - April 20**

**10:00 Around the Block Krista Moser Patterns Using Creative Grid 60 Degree Diamond Ruler**

**11:00 Quilter's Stash Teeny Tiny Collage**

**12:00 Fig Leaf Turn About Patchwork**

**1:00 Stitches Improv Piecing**

**2:00 Country Crafts It's the Berries! - Strawberry Wool Applique**

**Needlecase - A Make & Take**

## **STONEHENGE CONTEST!**

Northcott fabrics is holding a quilt challenge to celebrate 10 years of their fabric line, Stonehenge. This challenge runs from March 15-Sept 30.

**Our block is done!**



The block is 12" finished and the kit is \$5.

Participating stores will design and kit a block. Your challenge is to use at least 12 blocks & make a quilt, no size limit on the final quilt. The Grand Prize winner will get a 9-day trip for two to England to visit Stonehenge. Separately, there is a second contest involving the Stonehenge panel that is local to each participating store. Deadline for making a quilt with the panel is November 30. Each store will choose a winning quilt, and submit the winner to Northcott. Northcott will then choose 10 winners and will award each winner \$100. See me for more details.

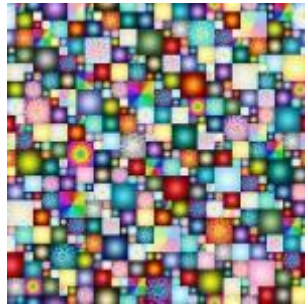
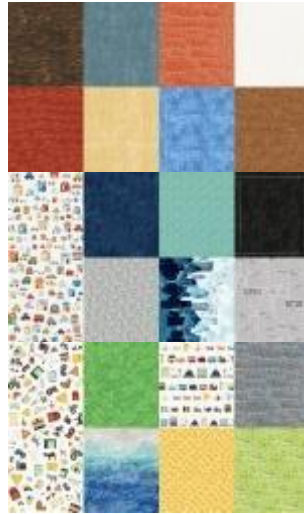
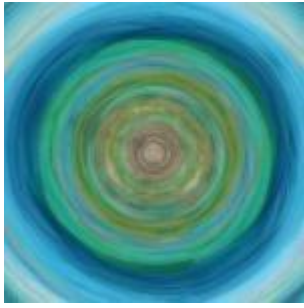
---

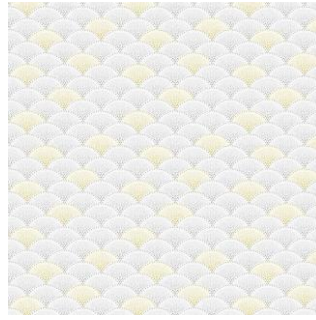
## WHAT'S NEW!!

From In the Beginning:

**Diaphanous Fabric is cut for everyone in the FanFaire and Mystic Garden classes. Please, please please, please come & pick up your fabrics.**

From Hoffman:

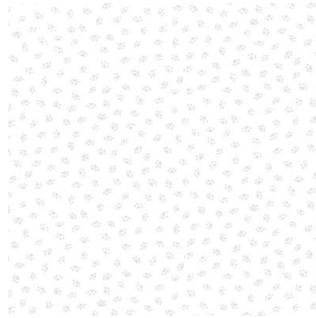
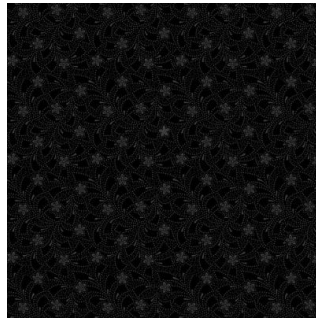
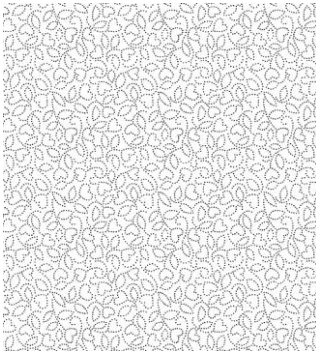




A few things you can do with the Around Town collection (hoffman collection shown above):



From RJR:

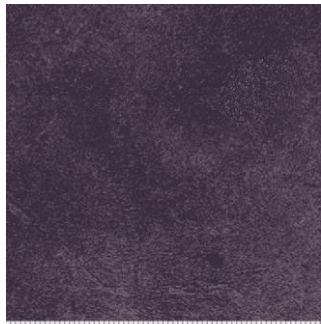


plus 2 more whites

From P&B:



INCH www.pbtex.com SUE6 302 LG



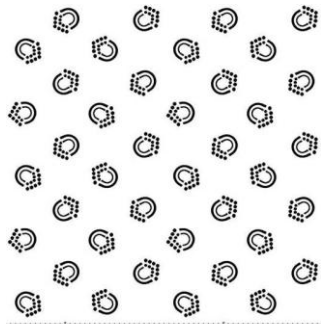
INCH www.pbtex.com SUE6 302 VV



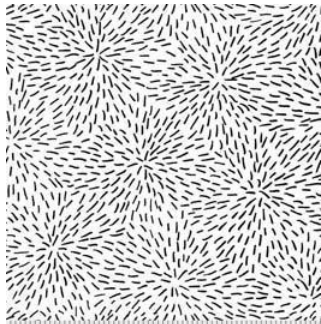
INCH www.pbtex.com SUE6 302 LZ



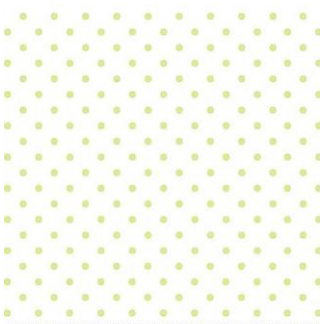
INCH www.pbtex.com SUE6 302 B



INCH www.pbtex.com RA12 811 W



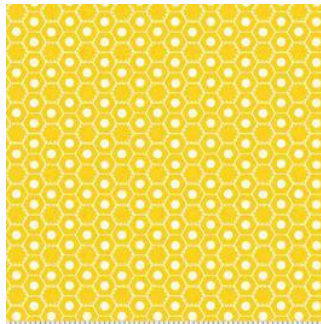
INCH www.pbtex.com SKU: RA11 777 W & O1



INCH www.pbtex.com BASF 25042 LTGRE 1F

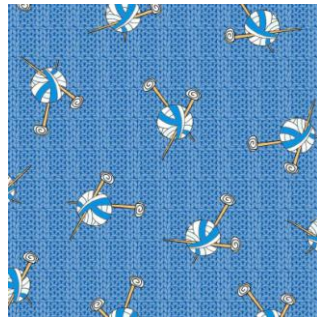
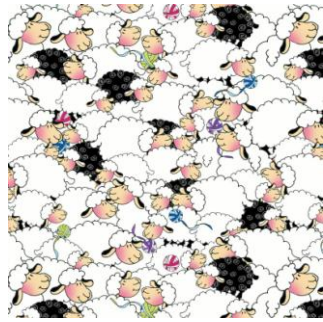


INCH www.pbtex.com 4486 25044 MDPUR1



INCH www.pbtex.com SKU: 26422 - YEL1

From Henry Glass:

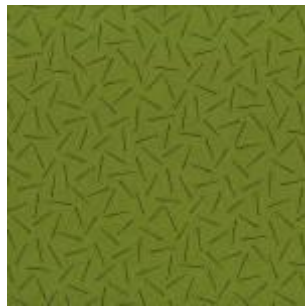


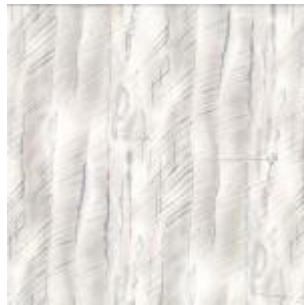
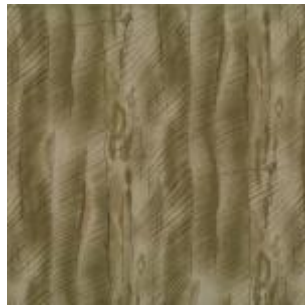
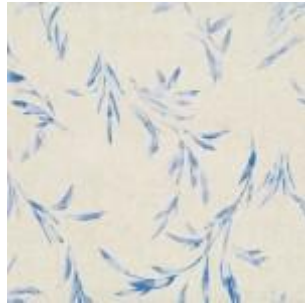
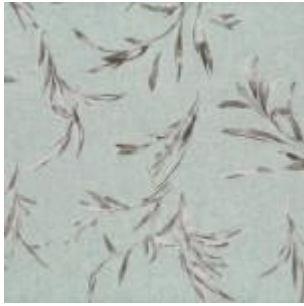
From RJR





From Lecein:



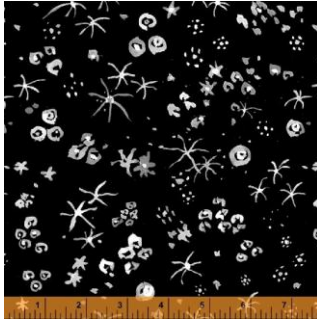


From Windham:



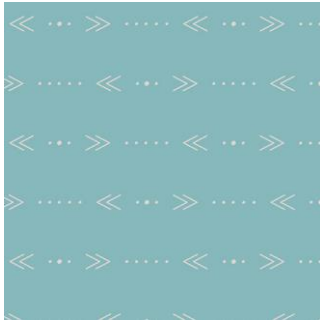
Cork!



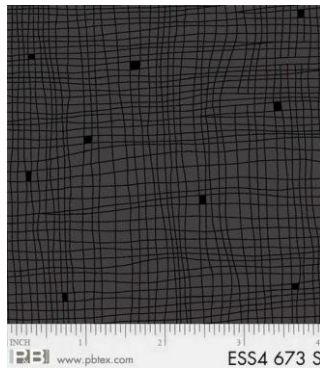
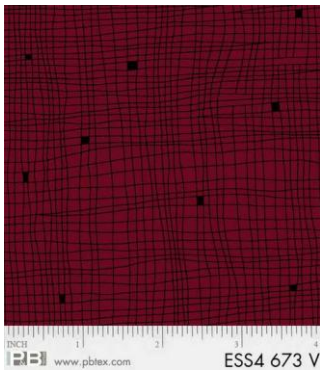
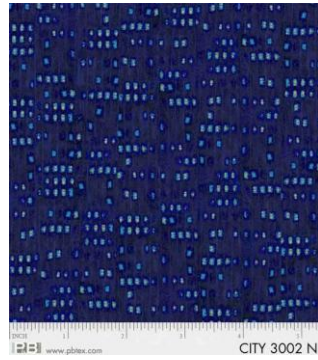
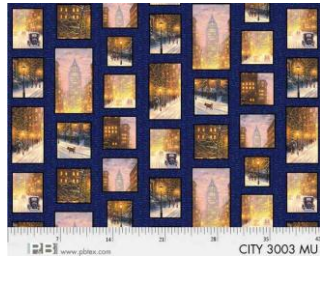


From AGF:

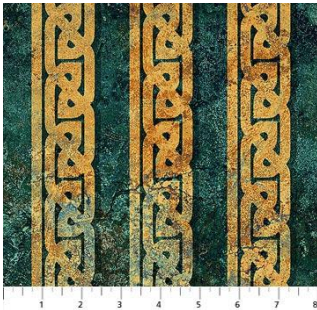
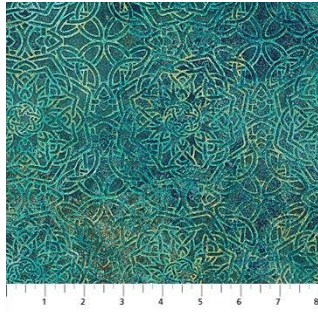
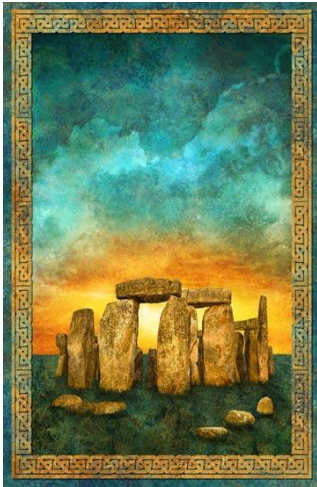




From P & B:

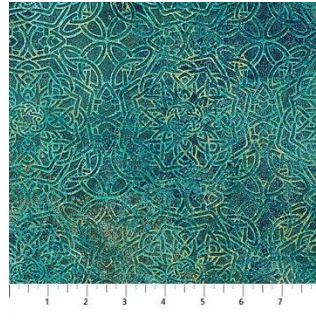


From Northcott:



From Timeless:





## **SIGN UP FOR LONG ARM QUILTING CLASSES TODAY!**

**Classes are on Wednesdays and some Saturdays: 10:30-1:30; 2:30-5:30, or 6-8:30. Check the calendar for dates. Only 4 to a class.**

**Rentals have started for those who have taken the class. Tuesdays and Fridays, and a couple of Saturday and Sunday rentals. Check the calendar for rentals. Generally, there are 2 rentals times per day: 10:30-2 and 2:30-6. \$25/hr or \$85 for 3 1/2 hours. \$50 minimum. Plus \$5/bobbin for thread. Most quilts (double and smaller), even for beginners, will take about 2 1/2-3 hours. We will discuss what you plan to do on your quilt and will help you estimate how long it will take.**

**Class descriptions follow the calendar, so keep scrolling. Classes are listed alphabetically.**

---

# April 2019

Sun	Mon	Tues	Wed	Thurs	Friday	Sat
	1 -	2 Hand work Club 2-4 Long Arm Rental Day	3 Long Arm Quilt classes 10:30-1:30; 2:30-5:30; OR 6-9	4 Beginning Machine Quilting 1-4 OR 6-9	5 Long Arm Rental Day	6 BOM 10:30 Cat's Play 12-4  Monthly Mini 4-6
7 Closed	8	9 Hand work Club 2-4 Long Arm Rental Day	10 Knit Pickers' Club 3-7	11 Live Each Season Wool Applique Wall hanging Spring 1-4	12 Open sew 3-7 Long Arm Rental Day	13 Embroidery Club 10-noon Potluck II 1-5
14 Fantasy Forest 1-4	15	16 Hand work Club 2-4 Long Arm Rental Day	17	18	19 SHOP HOP <a href="#">Good Friday</a>	20 SHOP HOP
21 Closed <a href="#">Easter</a>	22	23 Hand work Club 2-4 Long Arm Rental Day	24 Knit Pickers' Club 3-7	25 Beginning Paper Piecing 1-4 OR 6-9	26 Open sew 3-7 Long Arm Rental Day	27 Cat's Play 10:30-1:30 Mystic Garden 2-6
28 Fantasy Forest 1-4	29 Grandma's Flower Garden English Paper Piecing & Hand Piecing 1-4	30 Hand work Club 2-4 Long Arm Rental Day				Color of the month: yellow

# May 2019

Sunday	Mon	Tues	Wed	Thurs	Fri	Sat
			1 Long Arm Quilt classes 10:30-1:30; 2:30-5:30; OR 6-9	2 Beginning Machine Applique 1-4 OR 6-9	3 Binding 1-4  Long Arm Rental Day	4 BOM 10:30 Long Arm Rental 12-4  Monthly Mini 4-6
5 Closed	6	7 Hand work Club 2-4 Long Arm Rental Day	8 Knit Pickers' Club 3-7	9 Live Each Season Wool Applique Wall hanging Summer 1-4	10 Open sew 3-7 Long Arm Rental Day	11 Embroidery Club 10-noon Potluck II 1-5
12 <a href="#">Mother's Day</a>	13	14 Hand work Club 2-4 Long Arm Rental Day	15	16 Project Day: Needle Case #3 1-5	17 Long Arm Rental Day	18 Fan Faire 10:30-5
19	20	21 Hand work Club 2-4 Long Arm Rental Day	22 Knit Pickers' Club 3-7	23 Project Day: Needle Case #3 1-5	24 Open sew 3-7 Long Arm Rental Day	25 Mystic Garden Retreat 10:30-6
26 Mystic Garden Retreat 1-5	27 Mystic Garden Retreat 10:30-6  <a href="#">Memorial Day</a>	28 Hand work Club 2-4 Long Arm Rental Day	29	30 Project Day: Needle Case #3 1-5	31 Long Arm Rental Day	Color of the month: whites



## Spring Classes

**Beginning Machine Applique** Thurs May 2, 1-4 OR 6-9 \$25 Barb Boyer

So many quilts use applique these days. Learn the ins and outs of machine applique, from points to curves. We will practice the button hole/blanket stitch, satin stitch, and you can also play around with your decorative stitches. Threads, fusibles and stabilizers will be discussed.

**Beginning Paper Piecing**, Thur April 25, 1-4 or 6-9 Sue Frerich \$20

Learn the basic of paper/foundation piecing. This is a technique class where you will learn how to cut, sew & trim - all the essential steps for successful paper piecing. If you are not sure about stepping into a big paper piecing project and just want to learn the basics, this is the class for you.

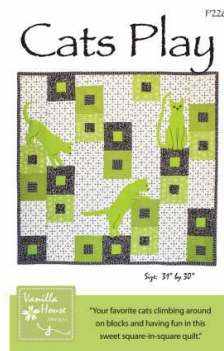
**Binding** May 3, 1-4 Barb Boyer \$20

This is an extended binding class. You will learn how to cut bias & cross grain bindings, how to sew it on including mitering the corners and joining the ends, & how to hand stitch the final side. Then in class, you will attach a binding to your own quilt. You will need to have a small project quilted & ready for binding.

**Block of the Month** First Sat of month 10:30-11:15 FREE Barb Boyer  
Join at any time. You get a free fat quarter if you come to class with the previous month's completed block. This year we're making a black & Y white + one color quilt. The challenge, if you choose to accept it, is work within the black & white palette (plus one color placed where ever you like). For the color choice, we are drawing paint chip cards, covered in newspaper so you can't see what color you're getting. But...if you don't like the color you've drawn you can 1) swap with a neighbor, or 2) draw a new color. And if you just can't bring yourself to work in neon green and no one will swap with you, you can just choose your own color.

**Cat's Play** Sat April 6 & 27, 10:30-1:30 Sue Frerich \$20

This is a small wall hanging, designed to teach a particular machine applique technique. In the first class you will learn how to make the block. It's easy and you will get a lot done in class. By the second class, you should have your quilt finished and the class will concentrate on the applique technique. This is a turned edge method for machine applique, which results in a finished, not a raw edge, applique.



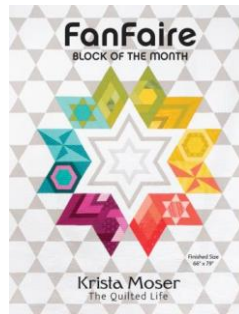
**Fancy Forest**, an Elizabeth Hartman quilt Sun April 14 & 28, 1-4 Sue Frerich \$25

This is a delightful sampler quilt featuring animal blocks: Fancy Fox, Hazel Hedgehog, Bunny, Thistle, Francis Firefly and Allie Owl. This fat quarter friendly project is sewn with simple straight and diagonal seams with no templates or paper piecing. Just so you know, the Diaphanous fabrics line from In the Beginning would be a great choice for some of the animals. You can make the quilt in

baby, wall hanging or bed size.

**FanFaire** Sat May 18, June 15, July Korber \$25

Krista Moser quilt, no template FanFaire, is a 4-month block of the block is made twice totaling twelve block teaches you a new way to use Grids 60 Degree Diamond Ruler, Krista Moser. Cut a combination of triangles, hexagons, parallelograms and trapezoids to create this fun quilt, and all with one ruler! This quilt goes together fast and is oh so striking!



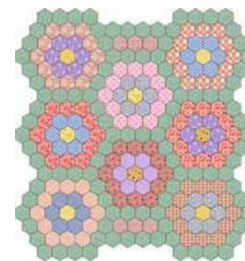
20 10:30-5 Jean

This quilt is a piecing. month. Each blocks. Every the Creative designed by diamonds,

### **Grandmother's Flower Garden, English**

**Paper Piecing** last Monday of each month, 2-4 Barb Boyer \$20 (one time fee)

We will teach the basics of English Paper Piecing, the simple & easy way to hand piece. English paper piecing dates back to the early 1800s. It is a hand sewing method that uses paper templates to help sew together, like hexagons. Any different designs can be made, Grandmother's Flower Garden-this we're doing this year. We will also show how to hand piece the traditional way, also, if you are interested.



complex angles number of including is the pattern

**Hand Applique/Back Basting** TBA Sandra Freeburg

Feb 13, 10-noon \$25 or call for other dates

Back basting is a template free method of needle turn applique. No slippery freezer paper or chalked lines on

top that never seem to get turned under quite right. This method is especially great for traveling, because your pieces will be basted onto your background -- no need for pins to get in the way. This class is great for beginners and all levels of applique. Don't let hand applique frustrate you. It's really easy and relaxing!

**Hand Embroidery Club** 2nd Sat. of the month, 10-noon FREE Kathy Sconce

If you want to learn to hand embroider or just brush up your technique, join us on the second Saturday of the month from 10 to noon. You can work on your own projects or you can join the project we are doing. This year we are following a purchased pattern called Gardner's Alphabet Quilt Block of the Month by Crabapple Hill. We will explore a variety of embroidery stitches for each block each block (2 letters per month), plus we will learn how to color with regular crayons to enhance the blocks. Each month Kathy Sconce shows us a new stitch to try, plus, she guides us through thread choices, how to knot, fabrics to use, and tracing techniques.



**Hand Quilting** Jan. 16, 10-noon Sandra Freeburg \$25 Watch the calendar or call for other dates

Hand quilting is an art that should not be lost. By the end of Sandra's class you will be hand quilting with confidence. Everyone has at least one special quilt that calls out for hand quilting. And there is nothing better than the feel of a hand quilted quilt. Do yourself a favor and learn this art that connects us to our past -- our mothers, grandmothers and great grandmothers.

**Knit Pickers' Club** 2nd and 4th Wed of each month, 3-7 Carol Moler  
We are changing up the Knit Pickers' Club. We're going to knit 2 days a month every second and fourth Wednesday, and we'll start earlier in the day at 3. For those you who work, we'll still be knitting 'till 7. The Club is open to all skill levels. We want to share what we've learned, find new patterns, and simply just sit and knit. We work on some felting projects, fingerless mittens, mittens, and socks. And we are working on a group project-meaning everyone does the same pattern. Each month we will learn a different pattern, make it into a square and eventually put all the squares into one project-afghan, scarf, bag, etc.

**Live Each Season Wool Applique** Thurs: Jan 10, Feb 7, Mar 7, April 11, May 9 (& rest of year) 1-4 Barb Boyer \$20

This wool wall hanging has 4 rows: Spring, Summer,



Fall & Winter. We will start with the Winter Row in January. We will take 2 months per row, and we'll take July & August off. You will learn wool applique, various embroider stitches, and how to add fun embellishments to your wall hanging.

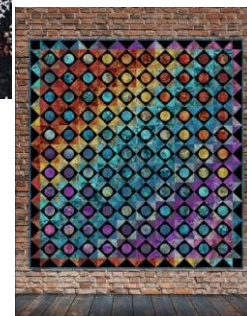
**Long Arm Quilting Classes** Wednesdays from 10:30-1:30, 2:30-5:30 or 6-8:30 Barb Boyer \$30 (check calendar for specific times & dates)  
In this class you will learn all about the Nolting long arm quilting machines: loading, threading, quilting. I'll demonstrate how to load and thread, set stitch length, change tension, wind and load bobbins. Then I will load a practice quilt onto the machine and show how to do hand guided quilting. Each student will be given at least 15-20 minutes of practice time. (Each class is limited to 4 students). You will be able to do free hand quilting plus you can practice following a pantograph. Any quilter who wants to rent to machines must take this class first, regardless of whether you have experience on a long arm machine. This class is not designed to teach you everything there is to know about long arm quilting-it's just a start.

**Minis** First Saturday of the Month, This year we are going to do several hangings. These will be kitted with necessary fabrics and patterns. We same wall hanging for 2-3 months. to do one or all of them (I think I scheduled). In class we will learn applique techniques to use on the of the kits come with so we will discuss how to add the to the quilts. First quilt: Change of are hummingbirds. Second quilt Snowmen! (we will do the snowmen



### Monthly

4-6 different wall all of the will work on the You can choose have 4 various machine blocks and some embellishments, embellishments plans: first quilt will be in **April**)

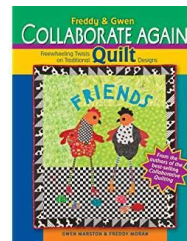


**Mystic Garden** Sat. April 27, 2-6, then a quilt retreat weekend at the shop, May 25-26, 10:30-6. Barb Boyer \$30.

This quilt uses the In the Beginning Diaphanous fabrics (most of them). This is a color wash styled quilt, with appliqued circles. I will teach a different turned edge applique method, suitable for blind hem stitch. The tough part of the class is not the piecing or the applique: it's keeping the fabrics in the right order. Thus, the retreat, so you don't have to take down your fabrics in between classes.

**Potluck II** Second Saturday of the Month, 1-5 Ginger Newman \$20

This is a free form, with some structure, class. It involves scraps, color, free form techniques, make it work anyway you want, and liberated thinking. I've never had so much fun and we want everyone to try this style and join the fun. This spring we are adding a twist: We are going to "collaborate" on a different block each month, selection chosen at random out of a hat. The challenge is make at least one block that you can 1) use into your quilt, 2) trade with a class member or 3) save it in your parts department for later. We will teach the blocks from Gwen Marston Collaborative Quilting book.



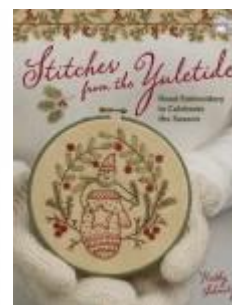
**Project Day:** Jan 24, Feb. 21, Mar 21, May 23 & 30, 1-5 Barb Boyer \$20/per class

On Project Day for Spring, we are doing needle cases. The first project is a little needle case in wool, with a cat (or other applique of your choice) (no picture of this case) applied on top. This project will be wool and embroidery threads - need to make the needle case. The second needle case is from a pattern by Sue Spargo. This needle case will not be kitted, but we have plenty of wools for you to choose. This needle case is very colorful and we want you to choose your favorite colors for making the case. We will teach the stitches and we'll have in stock Sue Spargo's Creative Stitchery book. The last needlecase project is out of the Stitches from the Yuletide by Kathy Schmitz. This is a two session class: one session for the needlework and one to make the bag. We will add a session if needed. This needlecase will not be kitted either.

**Bird & Bloom**  
Needle Case



6 1/2" x 8 1/2"



kitted with the everything you need to make the needle case. The second needle case is from a pattern by Sue Spargo. This needle case will not be kitted, but we have plenty of wools for you to choose. This needle case is very colorful and we want you to choose your favorite colors for making the case. We will teach the stitches and we'll have in stock Sue Spargo's Creative Stitchery book. The last needlecase project is out of the Stitches from the Yuletide by Kathy Schmitz. This is a two session class: one session for the needlework and one to make the bag. We will add a session if needed. This needlecase will not be kitted either.

**Spoon Quilting** Wed. Mar 13, 10-noon. \$25 Sandra Freeburg  
No more sore fingers! Learn to Spoon Quilt, with a special spoon quilting tool. This tool helps you keep your stitches tiny and even without pricking your finger. Need to have basic quilting skills (rocking motion

quilting).

## Nolting Longarm Machines

Nolting has 5 main machines, each with different reaches: from 17" to 30" depending on the machine. They are sold with or without a frame, but after I saw & helped set up one of the steel frames this week, I recommend buying the frame. All machines, except for the Standard-- the most economical machine-- have a stitch regulator. I recommend a stitch regulator. All machines can be equipped with a computer and there are a couple of different ones to choose from. In addition, you can get an extended table base so that you can use rulers, you can get larger bobbins on some of the models and on the frames you can get hydraulic lifts to raise and lower the tables. In the coming weeks, I will print out more information on each model.

The best entry level machine is the Fun Quilter. It comes in 17", 20" & 23" reach. It comes with the Intellistitch Equalizer stitch regulator, standard speed control, needle up/down, and fixed handles in the front & rear. This machine can also be equipped with a computer.



The Pro Machine has the Intellistitch Turbo stitch regulator, single stitch option, standard speed control, needle up/down and customizable handles in the front & rear. The Pro Machine comes in 20", 24" and 30" reach with 10-12" of inside height. There are easy dials on the front to set stitch length and other options. This machine can also be equipped with a computer.



The NV Machine is the newest in the fleet of Nolting machines. This machine has a touch screen with progra

mmable stitch regulation. You can stitch in 4 different stitch modes plus single stitch and needleup/down. It also has an adjustable brightness LED work light. This machine can also be equipped with a computer.



Nolting also has a commercial machine with the Intellistitch Equalizer stitch regulator, standard speed control, needle up/down, and fixed handles in the front & rear. This machine can also be equipped with a computer.

## CLUBS

### **HAND EMBROIDERY CLUB-FREE!**

If you want to learn to hand embroider or just brush up your technique, join us on the second Saturday of the month from 10 to noon. You can work on your own projects or you can join the project we are doing.

\*\*\*\*\*

### **Hand Work Club-FREE!**

Every Tuesday afternoon from 2-4, join us to just sit & hand stitch, crochet, bind, or knit group. Bring what you're working on, sit up at the table in front by the window and work on your projects for awhile. You can get advice & suggestions from your fellow quilters and share your experiences about your projects.

\*\*\*\*\*

### **Knit Pickers' Club FREE!**

This is another get-together class to sit & knit, work on our projects, share information and get some help. We will share techniques, suggest patterns, but mainly we'll sit & knit (or pick). We are discussing trying to do a group project-meaning everyone does the same pattern. Each month we will learn a different pattern, make it into a square and eventually put all the squares into one project-afghan, scarf, bag, etc. 2nd & 4th Wednesdays, 3-7.

\*\*\*\*\*

**Block of the Month Club FREE!**

First Saturday of the Month, 10:30-11:15. Join at any time. You get a free fat quarter if you come to class with the previous month's completed block.

\*\*\*\*\*

**Monthly Mini Club FREE!**

First Saturday of the Month from 4-6.

This year we are going to do several different wall hangings. These will be kitted with all of the necessary fabrics and patterns. We will work on the same wall hanging for 2-3 months. You can choose to do one or all of them (I think I have 4 scheduled). In class we will learn various machine applique techniques to use on the blocks and some of the kits come with embellishments, so we will discuss how to add the embellishments to the quilts.

\*\*\*\*\*

**Toad Toters Club**

On full moon days (as noted in the calendar) you will get 20% off all purchases (not otherwise discounted) that you can fit in your bag. You must bring your bag to participate.

Full Moon Days: January 20 , February 19 , March 20, April 19, May 18.

Discount Policy

We will honor only one discount -- whichever is largest. You can't combine a 10% with a 25% discount to get a 35% discount. On this we can't be bribed.

Color of the Month

January red; February purple; March green; April yellow; May white.

Join the fun and come feel the difference of quality fabrics.

Happy quilting!

Sincerely, Barbara Boyer

Around the Block

307-433-9555

[www.aroundtheblockquilts.com](http://www.aroundtheblockquilts.com)