



Around the Block
QUILT SHOP

April 13, 2018

Becca came into the house last night covered with mud.

"Becca," I asked suspiciously, "whatcha' been doing?"

"I'm building a bomb shelter." She proceeded to shake, splattering mud all over the rug.

"You've been watching the news again."

"So have you. You check every morning to see if the world has blown up."

She's right about that. If I've miss the top of the hour newscast (that lasts about 60 seconds) and all I see is Hoda talking about the latest cutesy video of a puppy playing with a newborn, I know nothing has been reduced to rubble.

I remember when 9/11 happened. It was the first day of my vacation, so I was packing up the car, ready to head to Omaha without a clue about the Twin Towers. I don't think I realized what was going on until I got to the Capitol to pick up something from my office that I had forgotten. That's when I turned off the book tape and started listening to the news.

"Becca, if something in the megaton thermo nuclear category hit Cheyenne, you couldn't dig anything deep enough to escape the blast."

"I could dig to China," she said slyly.

"Becca, that's not even remotely funny. Besides, you haven't really figured out how to dig out from under the fence. Where are you digging this hole, anyway?"

"Under my dog house, of course. I need to be able to get into it quickly."

"Trust me, you won't have time regardless where you dig it. Besides, you'll be on the other side of the yard barking at a jogger or a rabbit or a cow.

You'll be so distracted, you'll never make it to your hole"

She just glared at me.

"So how do you know how to build a bomb shelter, anyway?" As soon as I asked that question, I knew I had made a mistake. You never want to encourage a mini Aussie.

"Well," she said, "first I Googled 'bomb shelter' and one site talked about a shelter with a 'TRS Rating for overpressure and internal radiation doses, nuclear blast protection, corrosion protection system, intruder defense protection, NBC EMP protection per MIL-188-125, plumbing, electricity, internal EMP Shielded diesel generator power, EMP Shielding per MIL-

188-125 for all Mission Essential Equipment (MEE), electric lights, UV water sterilization, hot and cold running water, scanner and HAM radios, conventional toilet and septic, and furniture."

She wasn't quoting this from memory. She had written it down on her paw. I'm just kidding. I lifted the info from a NORAD Shelter Systems LLC site, a site which has nothing to do with NORAD, the North American Aerospace Defense Command.

"And?" I asked.

"I had no idea what they were talking about, but at the bottom of the Google page, there were related search suggestions and one of them was, 'Cheap underground survival shelters.' So I clicked on that."

"Becca, who would be stupid enough to build a cheap underground survival shelter?" She looked a little crestfallen. "Okay, how do you make a cheap underground survival shelter?"

"With earth bags," she said. "You don't even have to dig down very far. All you have to do is fill up a bunch of bags with dirt and put a top over it. Can I use those empty pellet bags over by the stove? They're about the right size." And with that she started carting some of the bags out the door.

"And you think that's going to work?" Again, I should have kept my mouth shut. Becca dropped the bags & turned around.

"Other than a direct hit, yeah, pretty much, if you're in a shelter. And we're in the middle of the country. Who would want to bomb Wyoming? Nobody lives here and most of the scenery is pretty dull. When your brother came for a visit, he wondered if I-25 south operated as an exit ramp from Wyoming. He said more cars & trucks were headed out rather than into the state."

"Cheyenne's important," I told her. "We've got an air force missile base here. We're a prime target."

"Everybody says that. Everybody thinks they live in an important enough place to be a number 1 target. Actually," she said, and I could see her thinking hard which is not a good sign, "we've got more to worry about if Yellowstone explodes. There's no coming back from that one."

She cocked her head and looked at me. "Do you keep your gas tank filled? In case we need to leave in a hurry?" She picked up the bags & headed outside.

Now I'm worried. Sigh.

SHOP HOP DEMO SCHEDULE

Friday April 20 Demo Schedule

10:00 a.m. Lickety Stitch Clearly Perfect Slotted Trimmers & Clearly Perfect Angles

11:00 a.m. Jukebox Quilts Piecing Perfection & Mastering Accuracy

12 noon Fig Leaf Charm Squares

1 p.m. Maggie's Sewing Creating with Wonderfil Thread

2 p.m. Quilter's Stash Creative Grid Pineapple Tool Rulers

3 p.m. Quilter's Dream YoYo Wreaths

4 p.m. Sewing Circle Sewing with Alternative Fabrics

Saturday April 21 Demo Schedule

10:00 a.m. Around the Block Hunter's Star Template

11:00 a.m. Quilter's Stash Creative Grid Pineapple Tool Rulers

12 noon Fig Leaf Charm Squares

1 p.m. Sewing Circle Sewing with Alternative Fabrics

2 p.m. Country Crafts Spring Strawberries - A Make and Take

Springtime in the Rockies Shop Hop! April 20-21 The Ranch, First National Bank Building, Loveland, CO

Our theme for this year's quilt show is Modern Quilts and we are asking for your participation. Design your own modern quilt or use a commercial pattern that embraces the modern quilting movement. To participate, fill out an entry form and bring it to the shop with your quilt by April 2. Forms are available here, just ask me for one. Quilts will hang at the Springtime in the Rockies Shop Hop at the Ranch, April 20 & 21. Gift Basket Prizes awarded: \$400 1st, \$300 2nd, and \$200 3rd, selected by Viewer's Choice. Quilts and prizes can be collected from me after the show.
A few rules: Quilts must be made by entrant and made within the last 6 months.

Our challenge this year is cats & dogs! Big ones, little ones, funny ones, short ones, tall ones. Design your own project or use a commercial pattern. To participate, fill out an entry form (get from me) and bring it to the shop with your project by April 2. Wallhangings, totes or other interpretations of cats and dogs no larger than 60" X 60" will be accepted. Last year Tracy Wilson won! Can we take home the prize again this year?!!!!

Projects will hang at the Springtime in the Rockies Shop Hop at the Ranch, April 20 & 21. Gift Basket Prizes awarded: \$150 1st; \$100 2nd; \$50 3rd, selected by Viewer's Choice. Projects and prizes can be collected from me after the show.

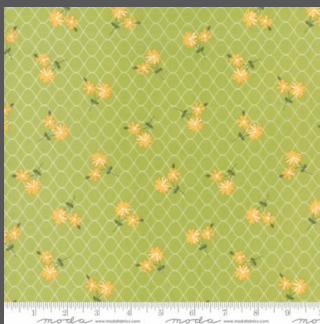
A few rules: Projects must be made by entrant and made within the last 6 months.

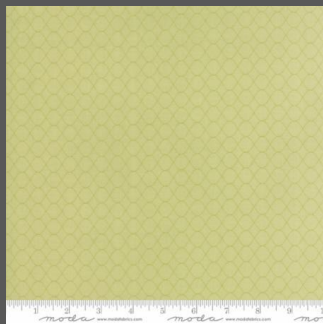
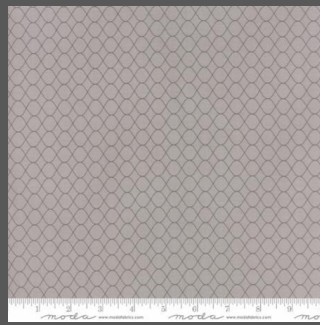
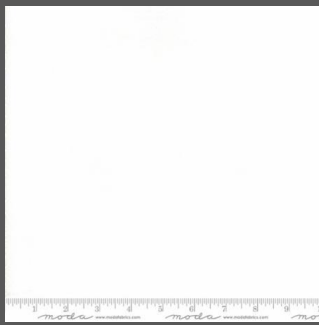
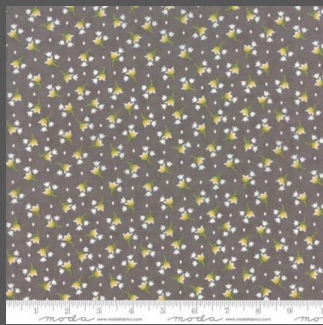
WHAT'S NEW!!

From Henry Glass:

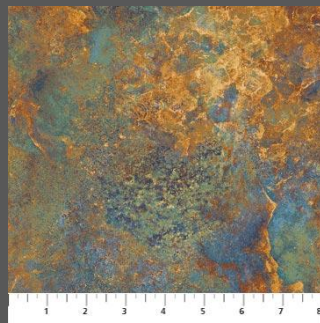
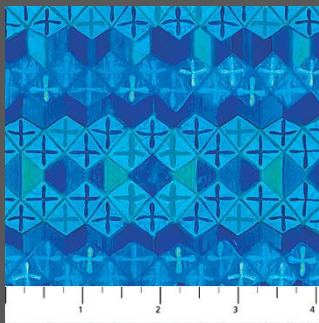
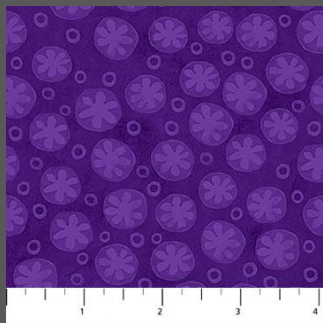
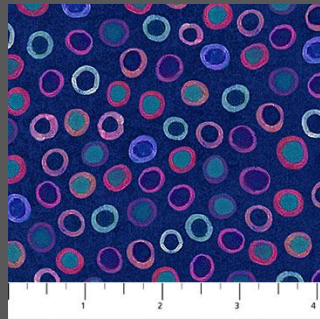


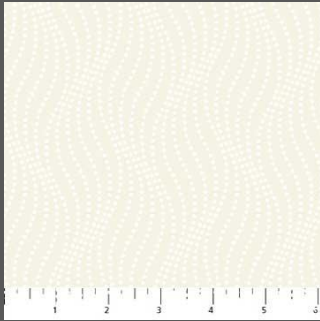
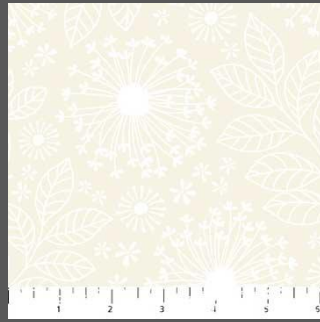
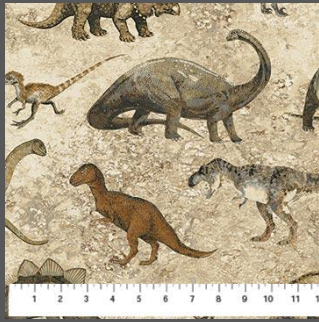
From Moda:





From Northcott:





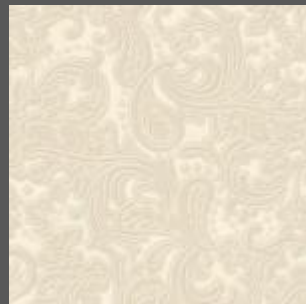
Clothworks:



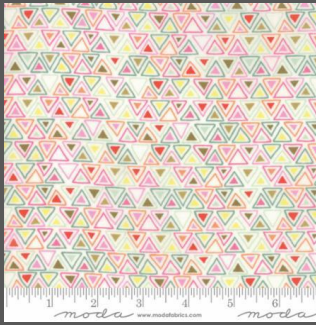
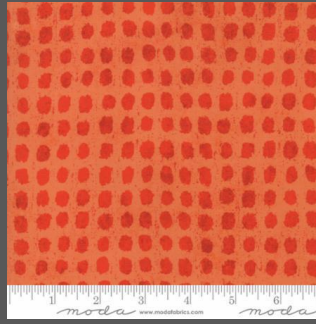
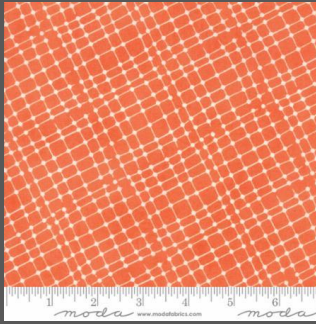


These last two are panels (just the turtle & pelican) that are only half shown above.

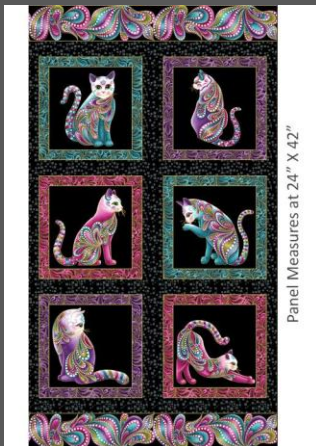
From Henry Glass:



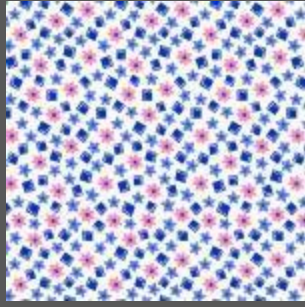
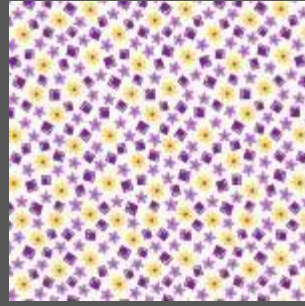
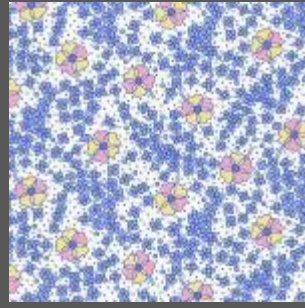
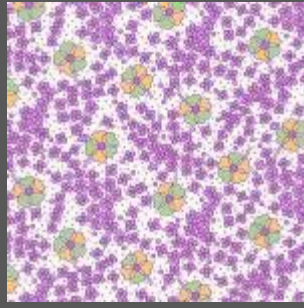
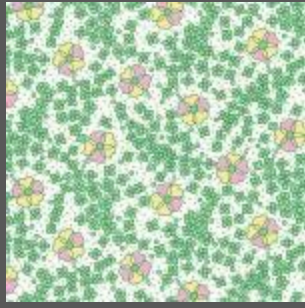
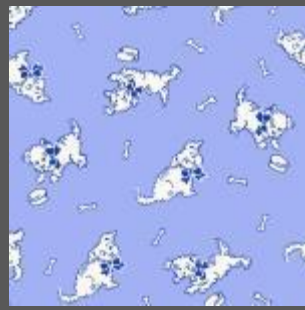
From Moda:

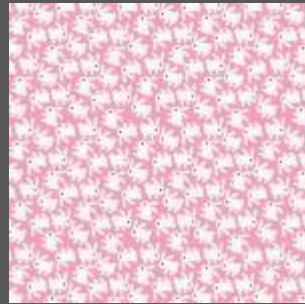
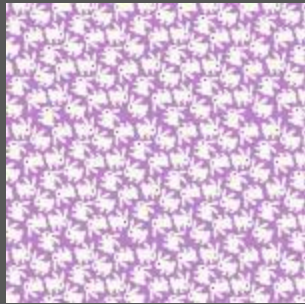
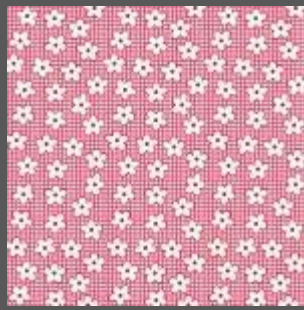
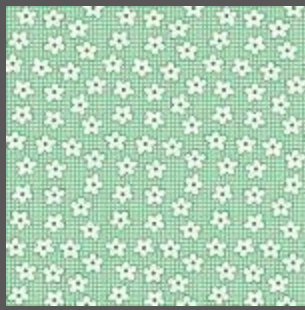


From Benartex:

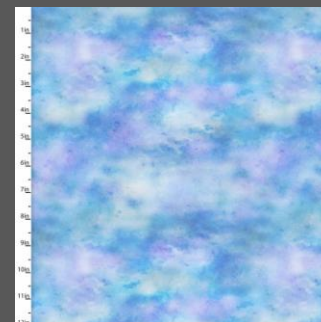
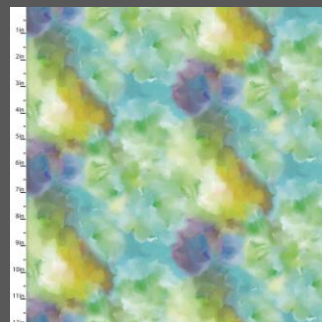
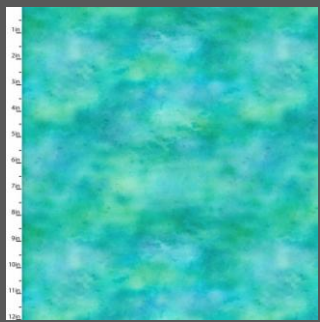
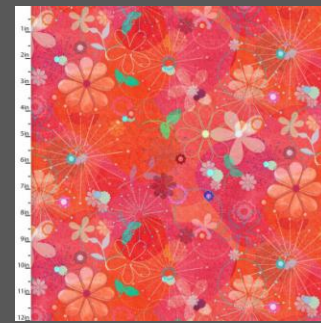
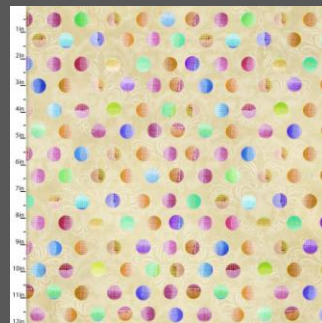
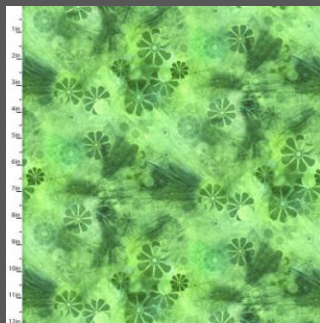


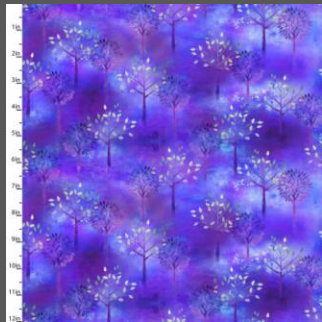
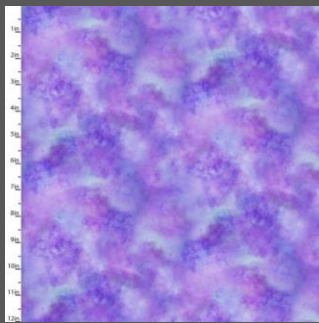
From Henry Glass, the Nana Mae 30s collection:





From 3 Wishes:



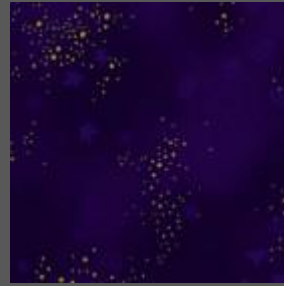


From Northcott:



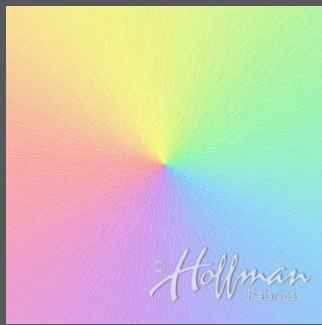


From Clothworks (the bolts are flannel and the precuts are cotton/flat):



From Hoffman:





From Elizabeth Studio:



SIGN UP FOR LONG ARM QUILTING CLASSES TODAY!

Classes are on Wednesdays and Saturdays in April: 10:30-1:30; 2:30-5:30, or 6-8:30. Check the calendar for April dates. Only 4 to a class.

Rentals have started for those who have taken the class. Tuesdays and Fridays, and a couple of Sunday rentals only for right now. Check the April calendar for rentals on Sunday. 2 rentals times per day: 10:30-2 and 2:30-6. \$25/hr or \$85 for 3 1/2 hours. \$50 minimum. Plus \$5/bobbin for thread. Most quilts (double and smaller), even for beginners, will take about 2 1/2-3 hours. We will discuss what you plan to do on your quilt and will help you estimate how long it will take.

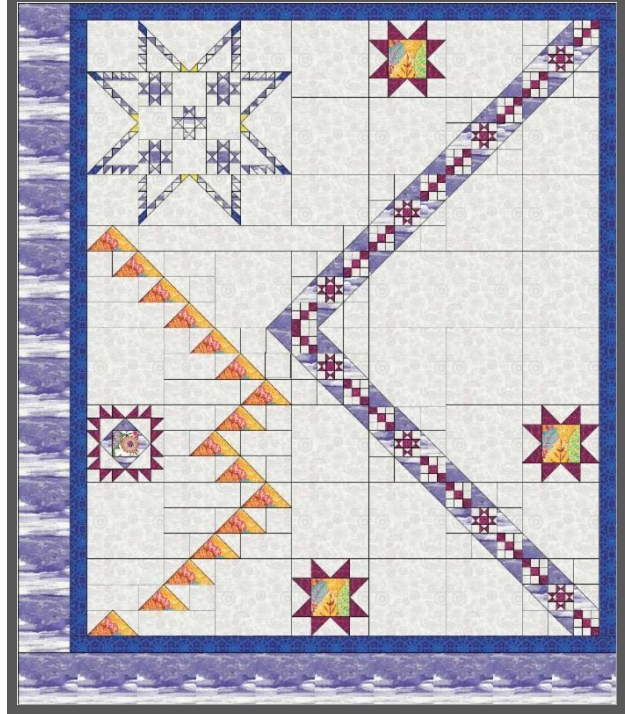
Class descriptions follow the calendar, so keep scrolling. Classes are listed alphabetically.

April

Sunday	Monday	Tuesday	Wednesday	Thursday	Friday	Saturday
1 CLOSED EASTER	2	3 Long are rental day	4 Long Arm Quilt class 10:30-1:30; 2:30-5:30; 6-9	5	6 Long are rental day	7 BOM 10:30 Floral Menagerie 1-4 Great Pumpkin 4-6
8 Long arm rental day	9	10 Long are rental day	11 Long Arm Quilt class 10:30-1:30; 2:30-5:30 Knit Pickers' Club 6- 8:30	12	13 Long are rental day	14 Embroidery Club 10- noon Long Arm Quilt class 2:30-5:30
15 Long arm rental day	16	17 Long are rental day	18	19	20 Shop Hop	21 Shop Hop
22	23	24 Long are rental day	25 Long Arm Quilt class 10:30-1:30; 2:30-5:30; 6-9	26 Paper Piecing 1-4	27 Long are rental day	28 One Block Wonder Panel 10:30-4
29 Pillow Case Party 1-4 FULL MOON	30 English Paper Piecing1-4					Color of the month: Yellow

Block of the Month First Sat of month 10:30-11:15 FREE Barb Boyer

Join at any time. You get a free fat quarter if you come to class with the previous month's completed block. This year we're making a "modern" quilt. Something new, something different. I will provide some other options as we explore the modern quilt world.



English Paper Piecing Club 4th (or last) Mondays 2-4 Barb Boyer \$20

English paper piecing dates back to the early 1800s. It is a hand sewing method that uses paper templates to help sew complex angles together, like hexagons. Any number of different designs can be made, including Grandmother's Flower Garden-this is the pattern I am STILL doing this year. Several patterns will be available, including traditional Flower Garden and the Downton Abbey free pattern.

French Braid March 17 & 31 10:30-5 Sue Frerich \$25

Are you looking for a little challenge & new technique to learn? That results in a spectacular quilt? Then come learn how to do the French Braid quilt. Casca

ding colors make this a very striking quilt-and it really is easier

than it looks. Techniques learn include how to handle bias, color placement to create a great cascading effect, and, of course, how to French Braid!



Hand Applique/Back Basting Wed Jan 17, 10-noon Sandra Freeburg \$25

Back basting is a template free method of needle turn applique. No slippery freezer paper or chalked lines on top that never seem to get turned under quite right. This method is especially great for traveling, because your pieces will be basted onto your background -- no need for pins to get in the way. This class is great for beginners and all levels of appliquers. Don't let hand applique frustrate you. It's really easy and relaxing!

Hand Embroidery Club 2nd Sat. of the month, 10-noon FREE Kathy Sconce

If you want to learn to hand embroider or just brush up your technique, join us on the second Saturday of the month from 10 to noon. You can work on your own projects or you can join the project we are doing. This year we are following a purchased pattern called My Crazy Life. It is wool

appliques on flannel backgrounds. Then we will explore a variety of embroidery stitches to embellish each block-4 six inch blocks per month (or whatever you choose to do), for a total of 48 blocks. Each month Kathy Sconce shows us a new stitch to try, plus, she guides us through thread choices, how to knot, fabrics to use, and tracing techniques. We will also discuss wool, felted wool, wool felt, various threads for embroidery, various techniques for the wool applique and setting options for the quilt.

Hand Quilting Wed Jan 31, 10-noon Sandra Freeburg \$25

Hand quilting is an art that should not be lost. By the end of Sandra's class you will be hand quilting with confidence. Everyone has at least one special quilt that calls out for hand quilting. And there is nothing better than the feel of a hand quilted quilt. Do yourself a favor and learn this art that connects us to our past -- our mothers, grandmothers and great grandmothers.

Hunter Star, the easy way May 19 10:30-4 Barb Boyer \$20 (Watch this date, it may have to change)

The Hunter looks complicated, but with the fast & easy tool, it's a snap. We are getting beautiful collections that I bought specifically for this class. If you are looking to learn a new technique, this is a great quilt for that.



Knit Pickers' Club 2nd Wed of each month, 6-8:30 Carol Moler

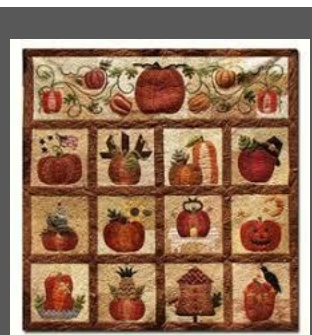
Every second Thursday, we're getting together to practice our knitting. The Club is open to all skill levels. We want to share what we've learned, find new patterns, and simply just sit and knit. This year we are doing a knit along project involving 6" squares. Each month we will learn a different pattern (or 2), make it into a square and eventually put all the squares into one project-afghan, scarf, bag, etc. Join us & learn some new stitches!

Long Arm Quilting Classes Wednesdays in, March & April from 10:30-1:30, 2:30-5:30 or 6-8:30 and Barb Boyer \$30 (check calendar for times & dates)

In this class you will learn all about the Nolting long arm quilting machines: loading, threading, quilting. I'll demonstrate how to load and thread, set stitch length, change tension, wind and load bobbins. Then I will load a practice quilt onto the machine and show how to do hand guided quilting. Each student will be given at least 15-20 minutes of practice time. (Each class is limited to 4 students). You will be able to do free hand quilting plus you can practice following a pantograph. Any quilter who wants to rent to machines must take this class first, regardless of whether you have experience on a long arm machine. This class is not designed to teach you everything there is to know about long arm quilting-it's just a start.

Monthly Minis First Saturday

This year we are going to do pattern. It will start in February Holiday Houses in January. Starting in February we will plan to do 2 blocks a month, months. In class we will discuss pumpkins. We will also discuss techniques to use on the



of the Month, Feb-Dec. 4-6 FREE

the Great Pumpkin Quilt, a purchased because we are still finishing last year's

work on the Great Pumpkin quilt. We will and do the top banner section over two use of color in the backgrounds and and learn various machine applique blocks.

One Block Wonder Panel Quilt Sat April 28 & May 12 & 26 see calendar for times

\$30 Sue Frerich

For all of you who missed the class before, you don't want to miss this class-we won't have it on the schedule again for awhile. The technique is called One Block Wonder and you need 7 panels for the quilt. Sue used a beautiful eagle print (keep your fingers crossed, we may be able to get 1 bolt). But we have lots of interesting panels that would make a fantastic One Block Wonder Panel Quilt. (I'm looking at the Star Wars panels....). The technique used is similar to a Stack & Whack quilt, but the difference is in how it is sewn together. This is truly a stunning quilt. You don't want to miss this class!



Pillow Case Party Sun. April 29 1-4 FREE

If you've never made a pillow case, or just want some time to sew a pillow case, this class is for you. This is a great mother/daughter styled class and pillow cases make great presents!

Spoon Quilting Wed Feb 7, 10-noon Sandra Freeburg \$25

No more sore fingers! Learn to Spoon Quilt, with a special spoon quilting tool. This tool helps you keep your stitches tiny and even without pricking your finger. Need to have basic quilting skills (rocking motion quilting).

Nolting Longarm Machines

Nolting has 5 main machines, each with different reaches: from 17" to 30" depending on the machine. They are sold with or without a frame, but after I saw & helped set up one of the steel frames this week, I recommend buying the frame. All machines, except for the Standard-- the most economical machine-- have a stitch regulator. I recommend a stitch regulator. All machines can be equipped with a computer and there are a couple of different ones to choose from. In addition, you can get an extended table base so that you can use rulers, you can get larger bobbins on some of the models and on the frames you can get hydraulic lifts to raise and lower the tables. In the coming weeks, I will print out more information on each model.

The best entry level machine is the Fun Quilter. It comes in 17", 20" & 23" reach. It comes with the Intellistitch Equalizer stitch regulator, standard speed control, needle up/down, and fixed handles in the front & rear. This machine can also be equipped with a computer.



The Pro Machine has the Intellistitch Turbo stitch regulator, single stitch option, standard speed control, needle up/down and customizable

handles in the front & rear. The Pro Machine comes in 20", 24" and 30" reach with 10-12" of inside height. There are easy dials on the front to set stitch length and other options. This machine can also be equipped with a computer.



The NV Machine is the newest in the fleet of Nolting machines. This machine has a touch screen with programmable stitch regulation. You can stitch in 4 different stitch modes plus single stitch and needle up/down. It also has an adjustable brightness LED work light. This machine can also be equipped with a computer.



Nolting also has a commercial machine with the Intellistitch Equalizer stitch regulator, standard speed control, needle up/down, and fixed handles in the front & rear. This machine can also be equipped with a computer.

HAND EMBROIDERY CLUB

If you want to learn to hand embroider or just brush up your technique, join us on the second Saturday of the month from 10 to noon. We use printed patterns and some vintage free patterns that you can embroider, embellish and color. Depending on the projects, each month Kathy Sconce shows us a new stitch to try, plus, she guides us through thread choices, how to knot, fabrics to use, and tracing techniques.

Knit Pickin' Club

This is another get-together class to sit & knit, work on our projects, share information and get some help. We will share techniques, suggest patterns, but mainly we'll sit & knit (or pick).

Toad Toters

On full moon days (as noted in the calendar) you will get 20% off all purchases (not otherwise discounted) that you can fit in your bag. You must bring your bag to participate.

Full Moon Days: Jan 1, Jan 31, March 1, March 31, April 29

Discount Policy

We will honor only one discount -- whichever is largest. You can't combine a 10% with a 25% discount to get a 35% discount. On this we can't be bribed."

Color of the Month

January purple; February red, March green, April yellow.

Join the fun and come feel the difference of quality fabrics.

Happy quilting!

Sincerely, Barbara Boyer

Around the Block

307-433-9555

www.aroundtheblockquilts.com