



Around the Block  
QUILT SHOP

July 6, 2018

I could be a walking advertisement for the indestructibility of the Craftsman riding lawn mower. Or how vulnerable hoses are to mower blades. Or what tree stumps do to mower blades.

It all started on July 4. And to be clear, alcohol was not involved, although I had had a slushy drink about 4 hours prior, but I had also had dinner and a 2 hour nap.

The mower didn't sound happy when I convinced it to start. Usually it takes a little finesse to get it started because there is a short that no one can find in the seat apparatus. Translation: When I take the mower into be serviced, I tell the guy that I have to wiggle my butt around to find the sweet spot, otherwise the mower just clicks at me. For those of you unfamiliar with the riding mowers, there is a fail safe mechanism that stops the mower when your butt comes off the seat. I'm a bit challenged because my legs are short and it's hard to keep my butt in the saddle when depressing the clutch.

But this time it only took a couple of adjustments - standing up, pulling up the seat, letting it drop back down, then sitting wiggle wiggle and depressing the clutch. And it turned over, but it had a little gear grinding sound that made me wonder if I needed to check the oil.

But we were off and chugging down the pasture, happily cutting grass. Well, kinda cutting. Occasionally it takes a couple of passes before the sturdier

weeds get hacked. I sharpen the blades only every two years or so. I don't cut that much grass each year and I figure the blades should last at least 10 mows, which adds up to maybe 2 years' worth of cutting. And it would, if I didn't also mow rocks, dirt, logs, branches, barbed wire, stumps and hoses. But I'm getting ahead of the story.

So I wandered out to the barrow ditch to cut a first swath before heading back to the front yard. I wanted a good 15 minutes of chugging around to refresh the battery because I have to get off the mower to open gates-which means I have to wiggle wiggle depress the clutch and hope it starts.

Which it did. I was a happy camper. So I'm tooling around the front yard (4 foot grass in most places) when I hear this horrendous grating sound and the mower stops in its tracks, still running, but not moving forward. Clearly I had run into something, but I hadn't seen anything big in front of me. Because the engine was still running, I made the mower go faster, not necessarily the best plan, but it worked and the mower rocked off whatever it had hit. I looked back and saw I had hit a tree stump. Not a big one, but I had forgotten we had taken that little tree down and clearly hadn't gotten the stump closer to the dirt.

And I'm thinking to myself, well, I'm definitely going to have to sharpen the blades after this summer, if not before. But by some miracle, the mower seemed to be cutting better than before. It's like the tree stump sharpened my blades. Don't send letters. I know I'm an idiot sometimes.

The next hazard I have to look out for is a known one: a hose. Usually I don't water the yard but last year I bought a squirting sprinkler with the idea that I might be able to keep soft grass in the yard. The dogs would like that. Unfortunately, the pressure from the hydrant blew the sprinkler apart and I never replaced it. And I never removed the new hose from the yard.

But I knew where that hose was. I could see part of it sticking up. Now most people would get off the mower, move the hose, get back on and wiggle wiggle start 'er back up. But I knew I could mow over the hose. The deck of the mower was high enough. I just had to avoid the part that was sticking up about 4 inches.

Did I mention how tall the grass was? Anyway, as I made another pass around the yard the mower found part of the hose that I had not seen and managed to pick it up, which caused it to wrap around the underside mower parts. And that killed the engine. It made a horrible sound as it died. So I did what any right minded person would do, I tried to restart. That's when I

figured out the hose was wrapped around the swirling blades underneath, because the engine died again.

So now I figure I've probably completely killed the mower, so I might as well try to restart again, but without engaging the mower blades. I mean, why not? And Voila! The Craftsman starts right up, no grinding sound. So I decided to try to move forward. Now this was interesting because the hose is now wrapped somewhat around the blades. I started dragging the hose with me and I wondered how far I could get before the hose held me up. Kinda like a dog at the end of chain attached to a dog house.

But...Craftsman to the rescue again. With a little back & forth action, the hose let go of the mower and I was back in business. I finished up in the yard, being very careful now to avoid the hose and the stump, and decided to go back to the barrow ditch. The mower was still doing a fine job of cutting, so I made a few more passes until the lightning started getting closer. I actually wondered whether lightning could find a moving target and I told myself I knew the answer to that. I'm not a complete idiot.

So here's to the Craftsman riding lawn mower bought at Sears in about 1996. It's older than I was when I graduated from college. It sits outside all year long without a cover, it gets serviced infrequently, it has one tire that goes flat every year, it's got a short in the seat, it's hard to climb on & off and the clutch is a reach for my short legs. But I bet I can't buy a new mower that chews up hoses (not the first I've run into), runs into stumps, chews up branches, spews rocks everywhere, and occasionally gets tangled in barbed wire and still cuts grass.

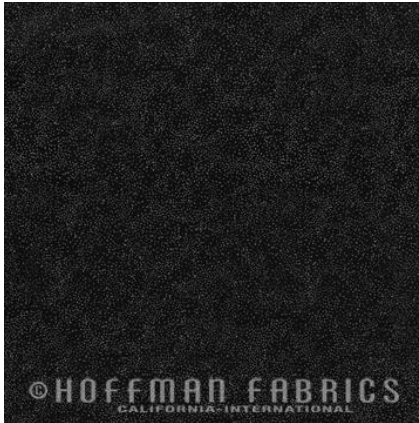
I can't say the same for the mower I got at Lowes and ran over with the car.

---

## WHAT'S NEW!!

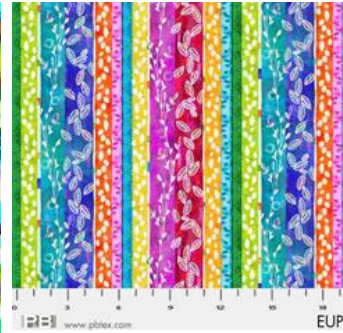
Notions are here: Lama pattern, rulers, cutters, blades, floss, pins, patterns, beginning quilt books, thimbles and more.

From Hoffman:



Yes--the wildlife fabric is back in. I have 2 bolts. We've cut one bolt into repeats of 2, which is what is needed for the quilt using the Times Three pattern. One of the bolts is almost gone, just so you know.

From P & B:



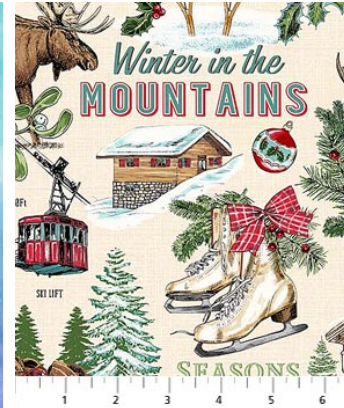


www.gblex.com EUP



www.gblex.com EUP

From Northcott:





From Estudio:

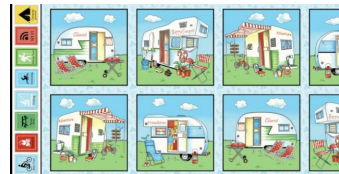








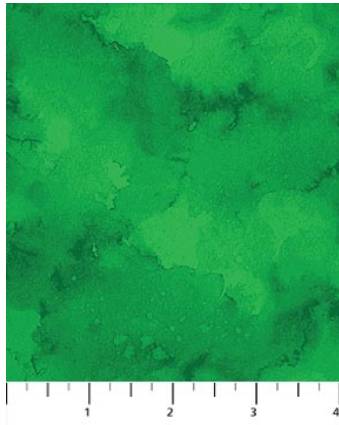
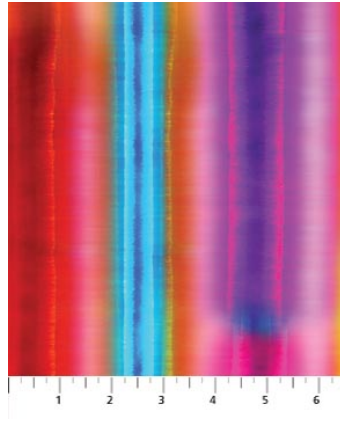
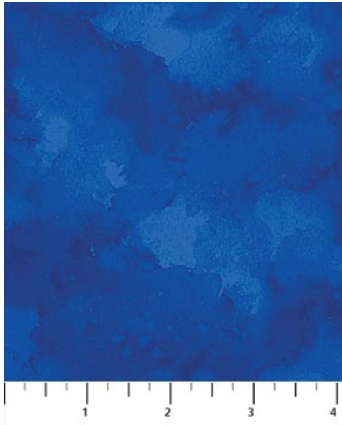
From Henry Glass:



From Alexander Henry:



From Northcott:



From Blank:



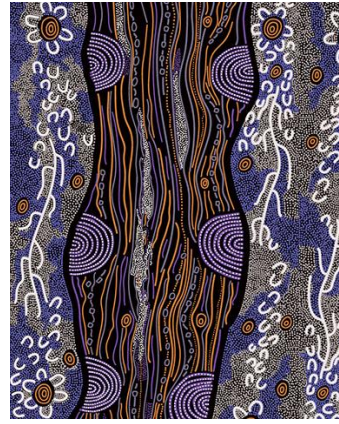
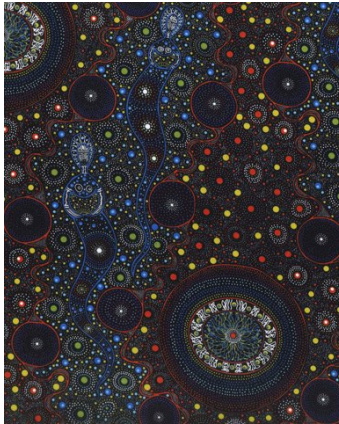
From Alexander Henry:

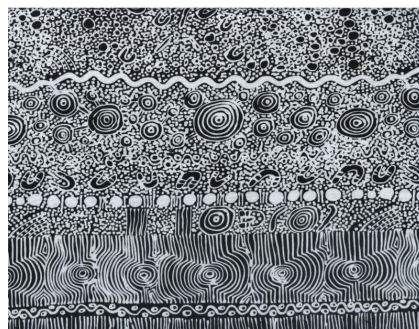
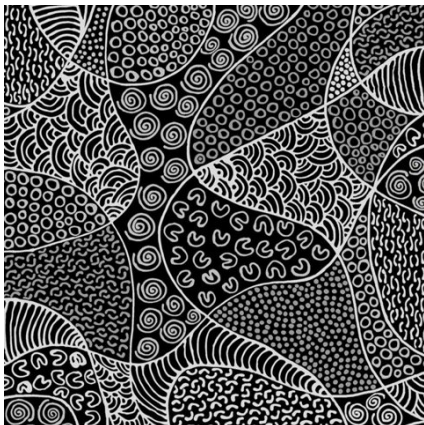


From Foust Textiles:



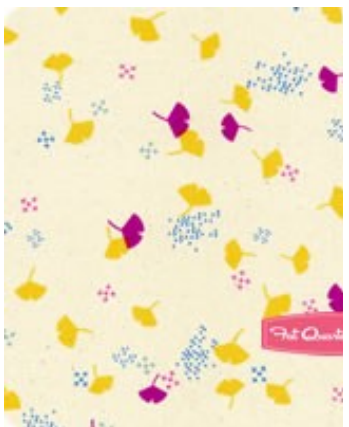
From M & S Textiles:





And a couple more I couldn't  
find

From Cotton & Steel:



From Henry Glass:



wool



wool



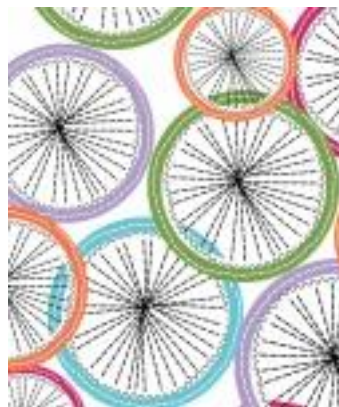
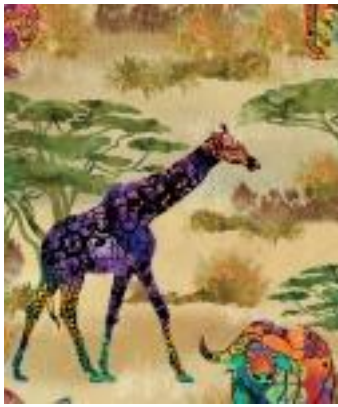
wool



wool





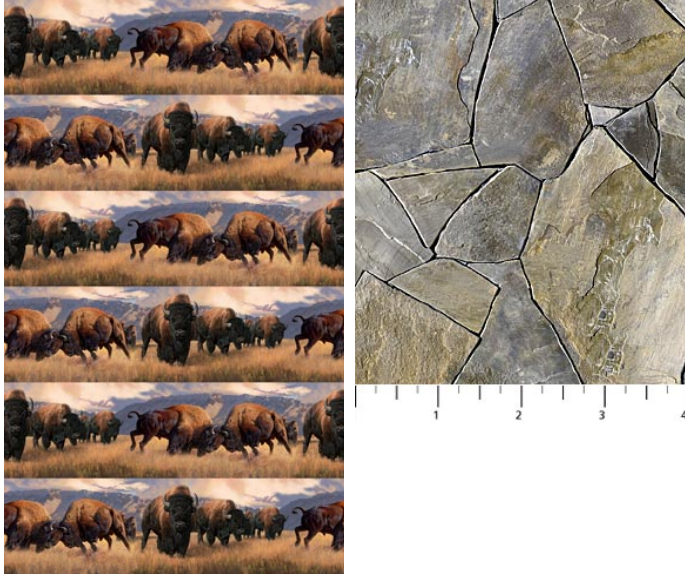


From Hoffman:



From Northcott:





## **SIGN UP FOR LONG ARM QUILTING CLASSES TODAY!**

**Classes are on Wednesdays and some Saturdays: 10:30-1:30; 2:30-5:30, or 6-8:30. Check the calendar for dates. Only 4 to a class.**

**Rentals have started for those who have taken the class. Tuesdays and Fridays, and a couple of Saturday and Sunday rentals. Check the calendar for rentals. Generally, there are 2 rentals times per day: 10:30-2 and 2:30-6. \$25/hr or \$85 for 3 1/2 hours. \$50 minimum. Plus \$5/bobbin for thread. Most quilts (double and smaller), even for beginners, will take about 2 1/2-3 hours. We will discuss what you plan to do on your quilt and will help you estimate how long it will take.**

Class descriptions follow the calendar, so keep scrolling. Classes are listed alphabetically.

---

## July 2018

Sunday	Monday	Tuesday	Wednesday	Thursday	Friday	Saturday
1 <b>CLOSED</b>	2	3 Long arm rental day	4 <b>CLOSED AT 3</b>	5	6 Long arm rental day	7 BOM 10:30 Long arm rental day 1-6 Great Pumpkin 4-6
8 Beginning Quilt 1-4	9 <b>Summer School Sessions, 1, 2, 3 &amp; 4</b>	10 Long arm rental day	11 Long Arm Quilt classes 10:30-1:30; OR 2:30-5:30 <b>Knit Pickers' Club 6-8:30</b>	12 Beginning Quilt 1-4	13 Long arm rental day	14 Embroidery Club 10-noon Summer School Sessions 1, 2, 3 & 4
15 Beginning Quilt 1-4	16	17 Long arm rental day	18 Disappearing 9-Patch 10:30-5	19 Beginning Quilt 1-4	20 Long arm rental day	21 <b>Jelly Roll Race 10:30-5</b>
22 Beginning Quilt 1-4	23	24 Long arm rental day	25 Long Arm Quilt classes 10:30-1:30; 2:30-5:30; OR 6-9	26 Beginning Quilt 1-4	27 Long arm rental day <b>Full Moon</b>	28 <b>9-Patch-Snowball quilt 10:30-5</b>
29 Beginning Quilt 1-4	30	31 Long arm rental day	Color of the month: Brown			

---

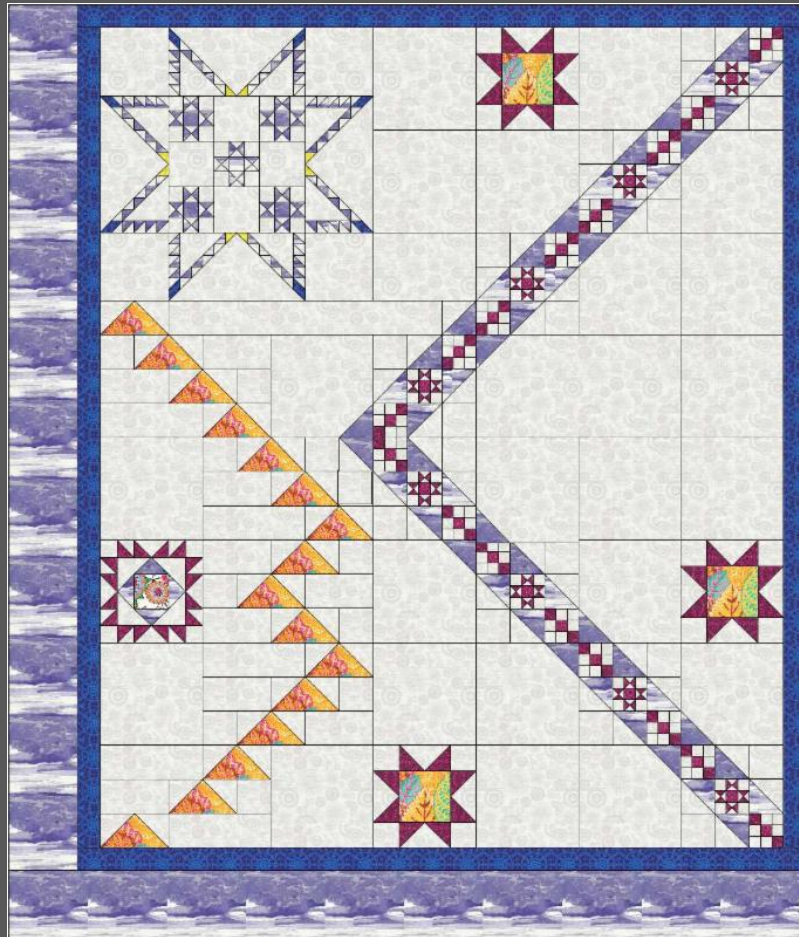
August

---

Sunday	Monday	Tuesday	Wednesday	Thursday	Friday	Saturday
			1 Long Arm Quilt classes 10:30- 1:30; 2:30-5:30; OR 6-9	2 Beginning Quilt 1-4	3 Long arm rental day	4 BOM 10:30 Long arm rental day 1-6 Great Pumpkin 4- 6
5 CLOSED	6	7 Long arm rental day	8 Knit Pickers' Club 6- 8:30	9	10 Long arm rental day	11 Embroidery Club 10-noon Summer School Sessions, 1, 2, 3 & 4
12 Beginning Quilt 1-4	13 Summer School Sessions, 1, 2, 3 & 4	14 Long arm rental day	15	16	17 Long arm rental day	18 Disappearing Triangles 10:30-5
19	20	21 Long arm rental day	22 Long Arm Quilt classes 10:30- 1:30; 2:30-5:30; OR 6-9	23	24 Long arm rental day	25 Long arm rental day
26	27	28 Long arm rental day	29	30	31 Long arm rental day	

**Block of the  
Month First Sat  
of month  
10:30-11:15  
FREE Barb  
Boyer**

Join at any time. You get a free fat quarter if you come to class with the previous month's completed block. This year we're making a "modern" quilt. Something new, something different. I will provide some other options as we explore the modern quilt world.



**Disappearing 9-Patch Wed July 18 Barb Boyer 10:30-5 \$20**

Take 48 5" squares, plus some extra fabric, make 9-patches, cut apart & sew back together again and voila! you have a fun, quick quilt. You don't have to worry about biased edges with this one. This is another one of our summer fun quilts. Techniques to learn: What happens when you chop up a perfectly good 9-patch!

**English Paper Piecing Club 4th (or last) Mondays 2-4 Barb Boyer \$20**

English paper piecing dates back to the early 1800s. It is a hand sewing method that uses paper templates to help sew complex angles together, like hexagons. Any number of different designs can be made, including

Grandmother's Flower Garden-this is the pattern I am STILL doing this year. Several patterns will be available, including traditional Flower Garden and the Downton Abbey free pattern.

**Hand Embroidery Club 2nd Sat. of the month, 10-noon FREE Kathy Sconce**

If you want to learn to hand embroider or just brush up your technique, join us on the second Saturday of the month from 10 to noon. You can work on your own projects or you can join the project we are doing. This year we are following a purchased pattern called My Crazy Life. It is wool appliques on flannel backgrounds. Then we will explore a variety of embroidery stitches to embellish each block-4 six inch blocks per month (or whatever you choose to do), for a total of 48 blocks. Each month Kathy Sconce shows us a new stitch to try, plus, she guides us through thread choices, how to knot, fabrics to use, and tracing techniques. We will also discuss wool, felted wool, wool felt, various threads for embroidery, various techniques for the wool applique and setting options for the quilt.

**Hand Quilting Wed As scheduled Sandra Freeburg \$25**

Hand quilting is an art that should not be lost. By the end of Sandra's class you will be hand quilting with confidence. Everyone has at least one special quilt that calls out for hand quilting. And there is nothing better than the feel of a hand quilted quilt. Do yourself a favor and learn this art that connects us to our past -- our mothers, grandmothers and great grandmothers.

**Jelly Roll Race Barb Boyer Sat July 21, 10:30-5 \$20**

Using 1 2 1/2" strip set (you need 40-48 strips) plus fabrics for borders, you can stitch this colorful quilt in less than an hour. I'm kidding. You can't get the borders on. Okay, I'm kidding. But most can get the inside sewn in about 4 hours. But it is a race and I throw some extra fun into the class. This is a great quilt to use to practice your long arm machine quilting! And it is easy. You can add borders or leave as easy. This is another one of our summer fun quilts. Technique to learn: sewing strips together on diagonal without drawing your lines.

**Knit Pickers' Club 2nd Wed of each month, 6-8:30 Carol Moler**

Every second Thursday, we're getting together to practice our knitting. The Club is open to all skill levels. We want to share what we've learned, find new patterns, and simply just sit and knit. This year we are doing a knit along project involving 6" squares. Each month we will learn a different pattern (or 2), make it into a square and eventually put all the squares into one project-afghan, scarf, bag, etc. Join us & learn some new stitches!

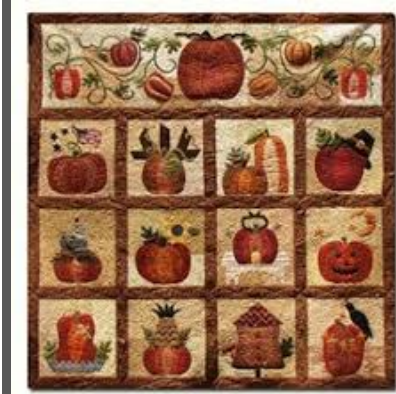
**Long Arm Quilting Classes Wednesdays in April & May from 10:30-1:30, 2:30-5:30 or 6-9 and Barb Boyer \$30 (check calendar for times & dates)**

In this class you will learn all about the Nolting long arm quilting machines: loading, threading, quilting. I'll demonstrate how to load and thread, set stitch length, change tension, wind and load bobbins. Then I will load a

practice quilt onto the machine and show how to do hand guided quilting. Each student will be given at least 15-20 minutes of practice time. (Each class is limited to 4 students). You will be able to do free hand quilting plus you can practice following a pantograph. Any quilter who wants to rent to machines must take this class first, regardless of whether you have experience on a long arm machine. This class is not designed to teach you everything there is to know about long arm quilting-it's just a start.

**Monthly Minis First Saturday of the Month, Feb-Dec. 4-6 FREE**

This year we are going to do the Great Pumpkin Quilt, a purchased pattern. It will start in February because we are still finishing last year's Holiday Houses in January. Starting in February we will work on the Great Pumpkin quilt. We will plan to do 2 blocks a month, and do the top banner section over two months. In class we will discuss use of color in the backgrounds and pumpkins. We will also discuss and learn various machine applique techniques to use on the blocks.



**Nine patch Snowball Quilt Sue Frerich Sat July 28, 10:30-5 \$20**

Learn how to the 9-patch block + snowball block turns squares into circles. We will teach the block in one size, but offer other sizes of blocks that are also suitable for 2 1/2" pre cut strips. If you need a quick western quilt, baby quilt, 30s reproduction quilt--this one makes up quickly. This is another one of our summer fun quilts. Technique to learn: How to make the corners of snowballs to the 9-patch seams.

**Summer School Sessions Barb Boyer \$5 June 9 (Sat), 11 (Mon), July 9 (Mon), 14 (Sat), classes at 1 p.m., 2 p.m., 3 p.m. & 4 p.m.**

We are holding refreshed classes, called Summer School, that last 1 hour each. At 1 p.m., we will teach how to put on borders; at 2 the class will be on half square triangles, including how to measure, how to cut, the math involved and how to square up; at 3 the class will be on quarter square triangles; and at 4 the class will be on flying geese, how to cut, sew and square. So if you need a refreshed on one or more of these techniques, each class is only \$5 and lasts 1 hour. The classes are scheduled on Mondays and Saturdays (generally the second Monday and Saturday from June through August). Class is demo only; you don't need to bring anything but yourself.



## Nolting Longarm Machines

Nolting has 5 main machines, each with different reaches: from 17" to 30" depending on the machine. They are sold with or without a frame, but after I saw & helped set up one of the steel frames this week, I recommend buying the frame. All machines, except for the Standard-- the most economical machine-- have a stitch regulator. I recommend a stitch regulator. All machines can be equipped with a computer and there are a couple of different ones to choose from. In addition, you can get an extended table base so that you can use rulers, you can get larger bobbins on some of the models and on the frames you can get hydraulic lifts to raise and lower the tables. In the coming weeks, I will print out more information on each model.

The best entry level machine is the Fun Quilter. It comes in 17", 20" & 23" reach. It comes with the Intellistitch Equalizer stitch regulator, standard speed control, needle up/down, and fixed handles in the front & rear. This machine can also be equipped with a computer.



The Pro Machine has the Intellistitch Turbo stitch regulator, single stitch option, standard speed control, needle up/down and customizable



handles in the front & rear. The Pro Machine comes in 20", 24" and 30" reach with 10-12" of inside height. There are easy dials on the front to set stitch length and other options. This machine can also be equipped with a computer.

The NV Machine is the newest in the fleet of Nolting machines. This machine has a touch screen with progra



mmable stitch regulation. You can stitch in 4 different stitch modes plus single stitch and needleup/down. It also has an adjustable brightness LED work light. This machine can also be equipped with a computer.

Nolting also has a commercial machine with the Intellistitch Equalizer stitch regulator, standard speed control, needle up/down, and fixed handles in the front & rear. This machine can also be equipped with a computer.

\*\*\*\*\*

#### HAND EMBROIDERY CLUB

If you want to learn to hand embroider or just brush up your technique, join us on the second Saturday of the month from 10 to noon. We use printed patterns and some vintage free patterns that you can embroider, embellish and color. Depending on the projects, each month Kathy Sconce shows us a new stitch to try, plus, she guides us through thread choices, how to knot, fabrics to use, and tracing techniques.

\*\*\*\*\*

#### Knit Pickin' Club

This is another get-together class to sit & knit, work on our projects, share information and get some help. We will share techniques, suggest patterns, but mainly we'll sit & knit (or pick).

#### Toad Toters

On full moon days (as noted in the calendar) you will get 20% off all purchases (not otherwise discounted) that you can fit in your bag. You must bring your bag to participate.

Full Moon Days: Jan 1, Jan 31, March 1, March 31, April 29, May 29, June 28, July 27

#### Discount Policy

We will honor only one discount -- whichever is largest. You can't combine a 10% with a

**25% discount to get a 35% discount. On this we can't be bribed."**

**Color of the Month**

**January purple; February red, March green, April yellow; May neutrals: whites & beiges;  
June brown; July Blue**

Join the fun and come feel the difference of quality fabrics.

Happy quilting!

Sincerely, Barbara Boyer  
Around the Block  
307-433-9555  
[www.aroundtheblockquilts.com](http://www.aroundtheblockquilts.com)

Around the Block, 453 Vandehie Suite 120, Cheyenne, WY 82009